

Anti-PIM2 antibody ab93667

画像数 1

製品の概要

製品名	Anti-PIM2 antibody
製品の詳細	Rabbit polyclonal to PIM2
由来種	Rabbit
アプリケーション	適用あり: IHC-P
種交差性	交差種: Human
免疫原	Synthetic peptide within Human PIM2 aa 250 to the C-terminus (C terminal). The exact sequence is proprietary. Database link: Q9P1W9
ポジティブ・コントロール	Human B cell lymphoma tissue
特記事項	This product is FOR RESEARCH USE ONLY. For commercial use, please contact partnerships@abcam.com. The Life Science industry has been in the grips of a reproducibility crisis for a number of years. Abcam is leading the way in addressing this with our range of recombinant monoclonal antibodies and knockout edited cell lines for gold-standard validation. Please check that this product meets your needs before purchasing. If you have any questions, special requirements or concerns, please send us an inquiry and/or contact our Support team ahead of purchase. Recommended alternatives for this product can be found below, along with publications, customer reviews and Q&As

製品の特性

製品の状態	Liquid
保存方法	Shipped at 4°C. Store at +4°C.
バッファー	pH: 7.60 Preservative: 0.1% Sodium azide Constituents: PBS, 1% BSA
精製度	Immunogen affinity purified
特記事項(精製)	Immunogen affinity purified immunoglobulin from rabbit serum.
ポリモノ	ポリクローナル
アイソタイプ	IgG

アプリケーション

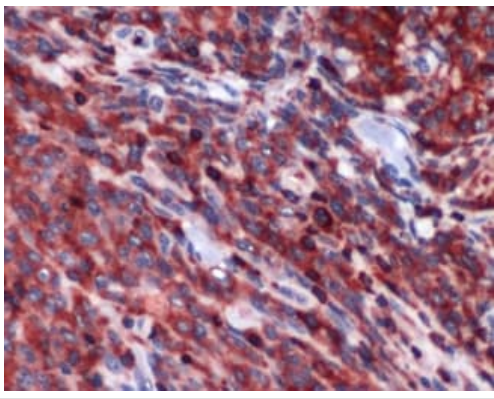
The Abpromise guarantee **Abpromise保証は、次のテスト済みアプリケーションにおけるab93667の使用に適用されます**
アプリケーションノートには、推奨の開始希釈率がありますが、適切な希釈率につきましてはご検討ください。

アプリケーション	Abreviews	特記事項
IHC-P		1/100. Perform heat mediated antigen retrieval with citrate buffer pH 6 before commencing with IHC staining protocol. 1/100 for 30 minutes at room temperature. Perform heat mediated antigen retrieval before commencing with IHC staining protocol. Boil tissue section in 1mM EDTA, pH 8.0 for 10 minutes followed by cooling at room temperature for 20 minutes.

ターゲット情報

機能	Promotes cell survival in response to a variety of proliferative signals via positive regulation of the I-kappaB kinase/NF-kappaB cascade; this process requires phosphorylation of MAP3K8/COT. Prevents apoptosis induced by growth factor withdrawal via inhibition of caspase-3 activation, and via phosphorylation of pro-apoptotic proteins. Inhibits BAD-induced cell death via phosphorylation of BAD. PIM2-mediated cell survival is glucose-dependent but independent of several AKT regulators such as PI3K, HSP-90 and TOR, indicating that PIM2 and PI3K/AKT/TOR function via distinct pathways. Involved in the positive regulation of chondrocyte survival and autophagy in the epiphyseal growth plate.
組織特異性	Highly expressed in hematopoietic tissues, in leukemic and lymphoma cell lines, testis, small intestine, colon and colorectal adenocarcinoma cells. Weakly expressed in normal liver, but highly expressed in hepatocellular carcinoma tissues.
配列類似性	Belongs to the protein kinase superfamily. CAMK Ser/Thr protein kinase family. PIM subfamily. Contains 1 protein kinase domain.
翻訳後修飾	Autophosphorylated.

画像



Immunohistochemistry (Formalin/PFA-fixed paraffin-embedded sections) - Anti-PIM2 antibody (ab93667)

ab93667, at a 1/100 dilution, staining PIM2 in formalin fixed, paraffin embedded Human B cell lymphoma tissue by Immunohistochemistry.

Please note: All products are "FOR RESEARCH USE ONLY. NOT FOR USE IN DIAGNOSTIC PROCEDURES"

Our Abpromise to you: Quality guaranteed and expert technical support

- Replacement or refund for products not performing as stated on the datasheet
- Valid for 12 months from date of delivery
- Response to your inquiry within 24 hours
- We provide support in Chinese, English, French, German, Japanese and Spanish
- Extensive multi-media technical resources to help you
- We investigate all quality concerns to ensure our products perform to the highest standards

If the product does not perform as described on this datasheet, we will offer a refund or replacement. For full details of the Abpromise, please visit <https://www.abcam.co.jp/abpromise> or contact our technical team.

Terms and conditions

- Guarantee only valid for products bought direct from Abcam or one of our authorized distributors