

# Anti-Phosphoribosyl pyrophosphate amidotransferase antibody ab125864

## 1 References [画像数 2](#)

医薬用外劇物

### 製品の概要

製品名	Anti-Phosphoribosyl pyrophosphate amidotransferase antibody
製品の詳細	Rabbit polyclonal to Phosphoribosyl pyrophosphate amidotransferase
由来種	Rabbit
アプリケーション	<b>適用あり:</b> WB, ICC/IF
種交差性	<b>交差種:</b> Human
免疫原	Recombinant fragment, corresponding to a region within amino acids 283-467 of Human Phosphoribosyl pyrophosphate amidotransferase (NP_002694).
ポジティブ・コントロール	WB: HepG2 and HCT116 whole cell lysates. IF: HeLa whole cells.
特記事項	<p>The Life Science industry has been in the grips of a reproducibility crisis for a number of years. Abcam is leading the way in addressing this with our range of recombinant monoclonal antibodies and knockout edited cell lines for gold-standard validation. Please check that this product meets your needs before purchasing.</p> <p>If you have any questions, special requirements or concerns, please send us an inquiry and/or contact our Support team ahead of purchase. Recommended alternatives for this product can be found below, along with publications, customer reviews and Q&amp;As</p>

### 製品の特性

製品の状態	Liquid
保存方法	Shipped at 4°C. Store at +4°C short term (1-2 weeks). Upon delivery aliquot. Store at -20°C or -80°C. Avoid freeze / thaw cycle.
バッファー	<p>pH: 7.00</p> <p>Preservative: 0.01% Thimerosal (merthiolate)</p> <p>Constituents: 78.99% PBS, 1% BSA, 20% Glycerol (glycerin, glycerine)</p>
精製度	Immunogen affinity purified
ポリ/モノ	ポリクローナル
アイソタイプ	IgG

## アプリケーション

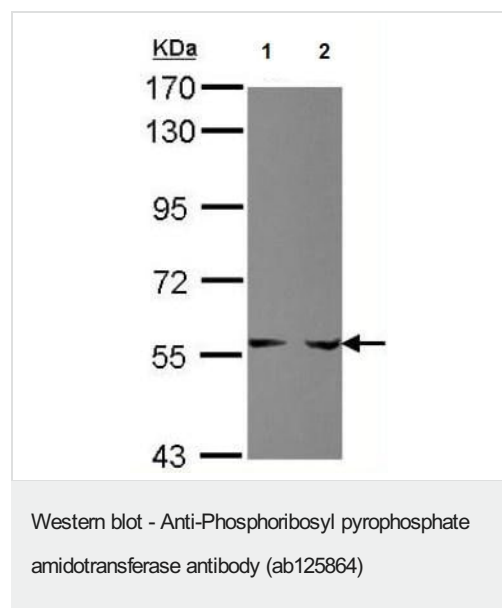
**The Abpromise guarantee** Abpromise保証は、 次のテスト済みアプリケーションにおけるab125864の使用に適用されます  
アプリケーションノートには、推奨の開始希釈率がありますが、適切な希釈率につきましてはご確認ください。

アプリケーション	Abreviews	特記事項
WB		1/500 - 1/3000. Predicted molecular weight: 57 kDa.
ICC/IF		1/100 - 1/1000.

## ターゲット情報

組織特異性	Ubiquitously expressed.
パスウェイ	Purine metabolism; IMP biosynthesis via de novo pathway; N(1)-(5-phospho-D-ribose)glycinamide from 5-phospho-alpha-D-ribose 1-diphosphate: step 1/2.
配列類似性	In the C-terminal section; belongs to the purine/pyrimidine phosphoribosyltransferase family. Contains 1 glutamine amidotransferase type-2 domain.

## 画像



**All lanes :** Anti-Phosphoribosyl pyrophosphate amidotransferase antibody (ab125864) at 1/1000 dilution

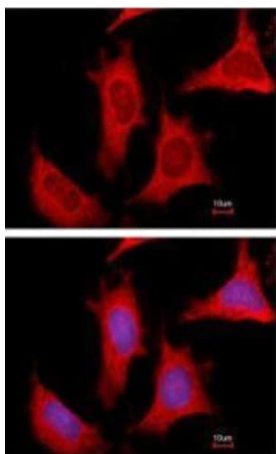
**Lane 1 :** HepG2 (human liver hepatocellular carcinoma cell line) whole cell lysate

**Lane 2 :** HCT 116 (human colorectal carcinoma cell line) whole cell lysate

Lysates/proteins at 30 µg per lane.

**Predicted band size:** 57 kDa

7.5% SDS PAGE



Immunofluorescence analysis of methanol-fixed HeLa (human epithelial cell line from cervix adenocarcinoma) whole cell lysate labeling Phosphoribosyl pyrophosphate amidotransferase with ab125864 at 1/500 dilution. Costained with Hoechst 33342 (Bottom panel).

Immunocytochemistry/ Immunofluorescence - Anti-Phosphoribosyl pyrophosphate amidotransferase antibody (ab125864)

**Please note:** All products are "FOR RESEARCH USE ONLY. NOT FOR USE IN DIAGNOSTIC PROCEDURES"

### Our Abpromise to you: Quality guaranteed and expert technical support

- Replacement or refund for products not performing as stated on the datasheet
- Valid for 12 months from date of delivery
- Response to your inquiry within 24 hours
- We provide support in Chinese, English, French, German, Japanese and Spanish
- Extensive multi-media technical resources to help you
- We investigate all quality concerns to ensure our products perform to the highest standards

If the product does not perform as described on this datasheet, we will offer a refund or replacement. For full details of the Abpromise, please visit <https://www.abcam.co.jp/abpromise> or contact our technical team.

### Terms and conditions

- Guarantee only valid for products bought direct from Abcam or one of our authorized distributors