




Anti-Phosphomevalonate kinase antibody ab65806

画像検索

医薬用外劇物

製品の概要

製品名	Anti-Phosphomevalonate kinase antibody
製品の詳細	Rabbit polyclonal to Phosphomevalonate kinase
由来種	Rabbit
アプリケーション	適用あり: WB, IHC-P
種交差性	交差種: Rat 交差が予測される動物種: Cow 
免疫原	Synthetic peptide corresponding to Human Phosphomevalonate kinase aa 135-151 (internal sequence). Sequence: EQSRQQRGWVFTPGVDD Database link: Q15126  Run BLAST with  Run BLAST with
ポジティブ・コントロール	WB: Rat cardiac muscle tissue. IHC-P: Rat skeletal muscle tissue.
特記事項	The Life Science industry has been in the grips of a reproducibility crisis for a number of years. Abcam is leading the way in addressing this with our range of recombinant monoclonal antibodies and knockout edited cell lines for gold-standard validation. Please check that this product meets your needs before purchasing. If you have any questions, special requirements or concerns, please send us an inquiry and/or contact our Support team ahead of purchase. Recommended alternatives for this product can be found below, along with publications, customer reviews and Q&As

製品の特性

製品の状態	Liquid
保存方法	Shipped at 4°C. Store at +4°C short term (1-2 weeks). Upon delivery aliquot. Store at -20°C. Avoid freeze / thaw cycle.
バッファー	Preservatives: 0.025% Thimerosal (merthiolate), 0.025% Sodium azide Constituents: 2.5% BSA, 0.45% Sodium chloride, 0.1% Dibasic monohydrogen sodium phosphate

精製度	Immunogen affinity purified
ポリ/モノ	ポリクローナル
アイソタイプ	IgG

アプリケーション

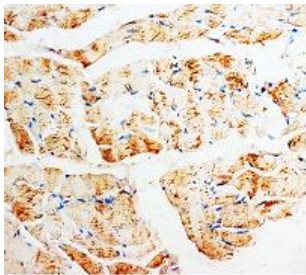
The Abpromise guarantee **Abpromise保証は、次のテスト済みアプリケーションにおけるab65806の使用に適用されます**
 アプリケーションノートには、推奨の開始希釈率がありますが、適切な希釈率につきましてはご検討ください。

アプリケーション	Abreviews	特記事項
WB		Use a concentration of 1 - 2 µg/ml. Predicted molecular weight: 22 kDa.
IHC-P		Use a concentration of 1 - 2 µg/ml.

ターゲット情報

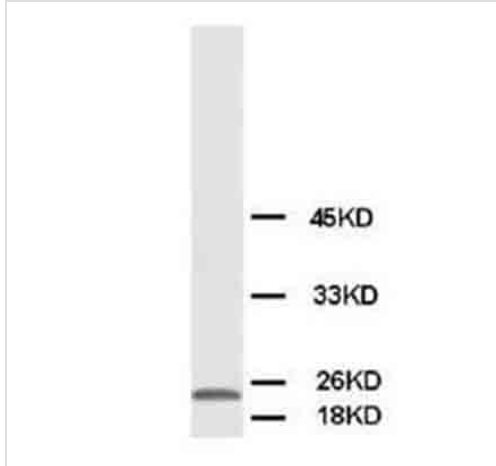
組織特異性	Heart, liver, skeletal muscle, kidney, and pancreas. Lower level in brain, placenta and lung.
パスウェイ	Isoprenoid biosynthesis; isopentenyl diphosphate biosynthesis via mevalonate pathway; isopentenyl diphosphate from (R)-mevalonate: step 2/3.
細胞内局在	Peroxisome.

画像



Paraffin embedded rat skeletal muscle tissue stained for Phosphomevalonate kinase using ab65806 at 1 µg/ml in immunohistochemical analysis.

Immunohistochemistry (Formalin/PFA-fixed paraffin-embedded sections) - Anti-Phosphomevalonate kinase antibody (ab65806)



Anti-Phosphomevalonate kinase antibody (ab65806) at 2 µg/ml + cardiac muscle tissue lysate

Predicted band size: 22 kDa

Observed band size: 22 kDa

Western blot - Anti-Phosphomevalonate kinase antibody (ab65806)

Please note: All products are "FOR RESEARCH USE ONLY. NOT FOR USE IN DIAGNOSTIC PROCEDURES"

Our Abpromise to you: Quality guaranteed and expert technical support

- Replacement or refund for products not performing as stated on the datasheet
- Valid for 12 months from date of delivery
- Response to your inquiry within 24 hours
- We provide support in Chinese, English, French, German, Japanese and Spanish
- Extensive multi-media technical resources to help you
- We investigate all quality concerns to ensure our products perform to the highest standards

If the product does not perform as described on this datasheet, we will offer a refund or replacement. For full details of the Abpromise, please visit <https://www.abcam.co.jp/abpromise> or contact our technical team.

Terms and conditions

- Guarantee only valid for products bought direct from Abcam or one of our authorized distributors