


# Anti-Phospholipase C gamma 1/PLC-gamma-1 antibody ab52200

**1** [References](#) **画像数** **2**

### 製品の概要

製品名	Anti-Phospholipase C gamma 1/PLC-gamma-1 antibody
製品の詳細	Rabbit polyclonal to Phospholipase C gamma 1/PLC-gamma-1
由来種	Rabbit
アプリケーション	<b>適用あり:</b> WB, IHC-P
種交差性	<b>交差種:</b> Human, African green monkey <b>交差が予測される動物種:</b> Mouse, Rat 
免疫原	Synthetic peptide corresponding to Human Phospholipase C gamma 1/PLC-gamma-1.
ポジティブ・コントロール	Human breast carcinoma tissue (IHC-P).
特記事項	<p>The Life Science industry has been in the grips of a reproducibility crisis for a number of years. Abcam is leading the way in addressing this with our range of recombinant monoclonal antibodies and knockout edited cell lines for gold-standard validation. Please check that this product meets your needs before purchasing.</p> <p>If you have any questions, special requirements or concerns, please send us an inquiry and/or contact our Support team ahead of purchase. Recommended alternatives for this product can be found below, along with publications, customer reviews and Q&amp;As</p>

### 製品の特性

製品の状態	Liquid
保存方法	Shipped at 4°C. Upon delivery aliquot and store at -20°C. Avoid freeze / thaw cycles.
バッファー	<p>pH: 7.40</p> <p>Preservative: 0.02% Sodium azide</p> <p>Constituents: 50% Glycerol (glycerin, glycerine), 0.87% Sodium chloride, PBS</p>
精製度	Without Mg+2 and Ca+2
特記事項 (精製)	Immunogen affinity purified
ポリ/モノ	ポリクローナル
アイソタイプ	IgG

## アプリケーション

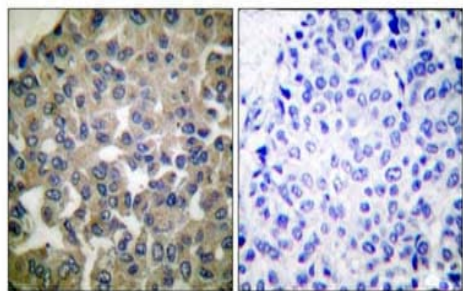
The Abpromise guarantee      Abpromise保証は、 次のテスト済みアプリケーションにおけるab52200の使用に適用されます  
アプリケーションノートには、推奨の開始希釈率がありますが、適切な希釈率につきましてはご検討ください。

アプリケーション	Abreviews	特記事項
WB		1/500 - 1/1000. Detects a band of approximately 149 kDa (predicted molecular weight: 149 kDa).
IHC-P		Use at an assay dependent concentration.

## ターゲット情報

機能	Plays a role in actin reorganization and cell migration. The production of the second messenger molecules diacylglycerol (DAG) and inositol 1,4,5-trisphosphate (IP3) is mediated by activated phosphatidylinositol-specific phospholipase C enzymes. Major substrate for heparin-binding growth factor 1 (acidic fibroblast growth factor)-activated tyrosine kinase.
配列類似性	Contains 1 C2 domain. Contains 1 EF-hand domain. Contains 2 PH domains. Contains 1 PI-PLC X-box domain. Contains 1 PI-PLC Y-box domain. Contains 2 SH2 domains. Contains 1 SH3 domain.
ドメイン	The SH3 domain mediates interaction with CLNK (By similarity). The SH3 domain also mediates interaction with RALGPS1.
翻訳後修飾	The receptor-mediated activation of PLC-gamma-1 and PLC-gamma-2 involves their phosphorylation by tyrosine kinases in response to ligation of a variety of growth factor receptors and immune system receptors. May be dephosphorylated by PTPRJ. Ubiquitinated by CBLB in activated T-cells.
細胞内局在	Cell projection > lamellipodium. Cell projection > ruffle. Rapidly redistributed to ruffles and lamellipodia structures in response to epidermal growth factor (EGF) treatment.

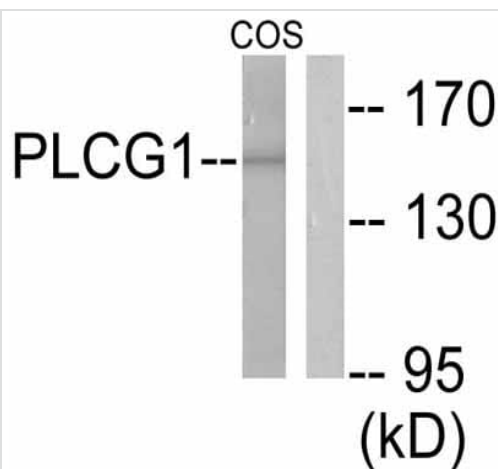
## 画像



Peptide - +

Immunohistochemistry (Formalin/PFA-fixed paraffin-embedded sections) - Anti-Phospholipase C gamma 1/PLC-gamma-1 antibody (ab52200)

Paraffin-embedded human breast carcinoma tissue stained for Phospholipase C gamma 1/PLC-gamma-1, using ab52200 (1/100). The right hand panel represents a negative control where ab52200 was pre-incubated with the immunizing (blocking) peptide.



Western blot - Anti-Phospholipase C gamma 1/PLC-gamma-1 antibody (ab52200)

**All lanes :** Anti-Phospholipase C gamma 1/PLC-gamma-1 antibody (ab52200) at 1/500 dilution

**Lane 1 :** Extracts from COS7 cells treated with EGF (200ng/ml, 30min).

**Lane 2 :** Extracts from COS7 cells treated with EGF (200ng/ml, 30min). For this panel, ab52200 was pre-incubated with the immunizing (blocking) peptide.

**Predicted band size:** 149 kDa

**Observed band size:** 149 kDa

**Please note:** All products are "FOR RESEARCH USE ONLY. NOT FOR USE IN DIAGNOSTIC PROCEDURES"

### Our Abpromise to you: Quality guaranteed and expert technical support

- Replacement or refund for products not performing as stated on the datasheet
- Valid for 12 months from date of delivery
- Response to your inquiry within 24 hours
- We provide support in Chinese, English, French, German, Japanese and Spanish
- Extensive multi-media technical resources to help you
- We investigate all quality concerns to ensure our products perform to the highest standards

If the product does not perform as described on this datasheet, we will offer a refund or replacement. For full details of the Abpromise, please visit <https://www.abcam.co.jp/abpromise> or contact our technical team.

### Terms and conditions

- Guarantee only valid for products bought direct from Abcam or one of our authorized distributors