

Anti-phospholipase A2 antibody ab23705

[16 References](#) [画像数 2](#)

製品の概要

| | |
|----------|---|
| 製品名 | Anti-phospholipase A2 antibody |
| 製品の詳細 | Rabbit polyclonal to Phospholipase A2 |
| 由来種 | Rabbit |
| アプリケーション | 適用あり: IHC-P, WB |
| 種交差性 | 交差種: Human 非交差種: Rabbit, Cow, Pig |
| 免疫原 | Human recombinant sPLA2 (Type IIa). |
| 特記事項 | <p>The Life Science industry has been in the grips of a reproducibility crisis for a number of years. Abcam is leading the way in addressing this with our range of recombinant monoclonal antibodies and knockout edited cell lines for gold-standard validation. Please check that this product meets your needs before purchasing.</p> <p>If you have any questions, special requirements or concerns, please send us an inquiry and/or contact our Support team ahead of purchase. Recommended alternatives for this product can be found below, along with publications, customer reviews and Q&As</p> |

製品の特性

| | |
|--------|---|
| 製品の状態 | Liquid |
| 保存方法 | Shipped at 4°C. Upon delivery aliquot and store at -20°C or -80°C. Avoid repeated freeze / thaw cycles. |
| バッファー | Constituent: Whole serum |
| 精製度 | Whole antiserum |
| ポリ/モノ | ポリクローナル |
| アイソタイプ | IgG |

アプリケーション

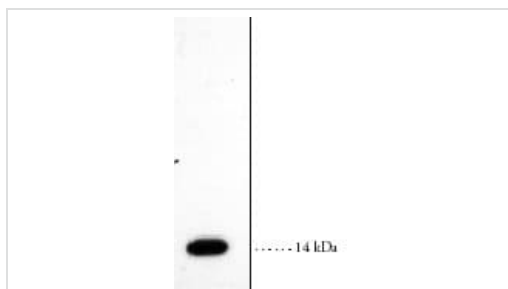
The Abpromise guarantee **Abpromise保証は、次のテスト済みアプリケーションにおけるab23705の使用に適用されます**
アプリケーションノートには、推奨の開始希釈率がありますが、適切な希釈率につきましてはご検討ください。

| アプリケーション | Abreviews | 特記事項 |
|----------|-----------|---|
| IHC-P | | Use at an assay dependent concentration. |
| WB | | 1/1000. Detects a band of approximately 14 kDa. |

ターゲット情報

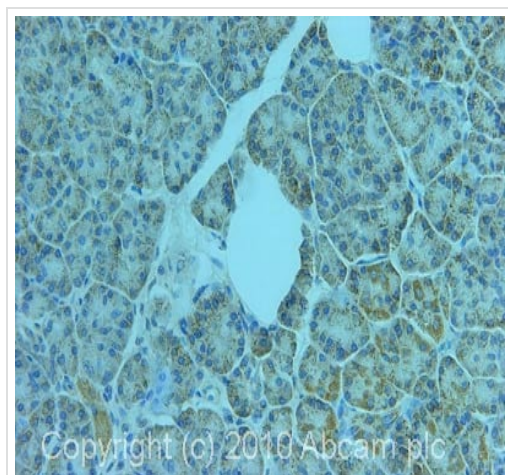
| | |
|-------|---|
| 機能 | Thought to participate in the regulation of the phospholipid metabolism in biomembranes including eicosanoid biosynthesis. Catalyzes the calcium-dependent hydrolysis of the 2-acyl groups in 3-sn-phosphoglycerides. |
| 配列類似性 | Belongs to the phospholipase A2 family. |
| 細胞内局在 | Membrane. |

画像



Western blot - Anti-phospholipase A2 antibody (ab23705)

Western blot detection of human phospholipase A2 (25µg) ab23705 at 1/1000 western blot detection of 0.25 ug of human phospholipase A2.



Immunohistochemistry (Formalin/PFA-fixed paraffin-embedded sections) - Anti-phospholipase A2 antibody (ab23705)

IHC image of ab23705 staining in human pancreas formalin fixed paraffin embedded tissue section, performed on a Leica Bond™ system using the standard protocol F. The section was pre-treated using heat mediated antigen retrieval with sodium citrate buffer (pH6, epitope retrieval solution 1) for 20 mins. The section was then incubated with ab23705, 5µg/ml, for 15 mins at room temperature and detected using an HRP conjugated compact polymer system. DAB was used as the chromogen. The section was then counterstained with haematoxylin and mounted with DPX.

For other IHC staining systems (automated and non-automated) customers should optimize variable parameters such as antigen retrieval conditions, primary antibody concentration and antibody incubation times.

Please note: All products are "FOR RESEARCH USE ONLY. NOT FOR USE IN DIAGNOSTIC PROCEDURES"

Our Abpromise to you: Quality guaranteed and expert technical support

- Replacement or refund for products not performing as stated on the datasheet
- Valid for 12 months from date of delivery
- Response to your inquiry within 24 hours

- We provide support in Chinese, English, French, German, Japanese and Spanish
- Extensive multi-media technical resources to help you
- We investigate all quality concerns to ensure our products perform to the highest standards

If the product does not perform as described on this datasheet, we will offer a refund or replacement. For full details of the Abpromise, please visit <https://www.abcam.co.jp/abpromise> or contact our technical team.

Terms and conditions

- Guarantee only valid for products bought direct from Abcam or one of our authorized distributors