

### Anti-Phospholamban antibody ab86930

7 References [画像数 2](#)

医薬用外劇物

#### 製品の概要

製品名	Anti-Phospholamban antibody
製品の詳細	Rabbit polyclonal to Phospholamban
由来種	Rabbit
アプリケーション	<b>適用あり:</b> WB
種交差性	<b>交差種:</b> Mouse, Rat, Human
免疫原	Synthetic peptide corresponding to Human Phospholamban aa 2-16 (N terminal). Sequence: EKVQYLTRSAIRRAS  Database link: <a href="#">P26678</a> <a href="#">Run BLAST with</a> <a href="#">Run BLAST with</a>
ポジティブ・コントロール	WB: Rat heart tissue lysate. CEM, MCF-7, HT1080, and HeLa cell lysates
特記事項	<p>The Life Science industry has been in the grips of a reproducibility crisis for a number of years. Abcam is leading the way in addressing this with our range of recombinant monoclonal antibodies and knockout edited cell lines for gold-standard validation. Please check that this product meets your needs before purchasing.</p> <p>If you have any questions, special requirements or concerns, please send us an inquiry and/or contact our Support team ahead of purchase. Recommended alternatives for this product can be found below, along with publications, customer reviews and Q&amp;As</p>

#### 製品の特性

製品の状態	Liquid
保存方法	Shipped at 4°C. Upon delivery aliquot and store at -20°C. Avoid repeated freeze / thaw cycles.
バッファー	Preservatives: 0.025% Sodium azide, 0.025% Thimerosal (merthiolate) Constituents: 2.5% BSA, 0.45% Sodium chloride, 0.1% Dibasic monohydrogen sodium phosphate
精製度	Immunogen affinity purified
ポリ/モノ	ポリクローナル
アイソタイプ	IgG

## アプリケーション

**The Abpromise guarantee** Abpromise保証は、 次のテスト済みアプリケーションにおけるab86930の使用に適用されます

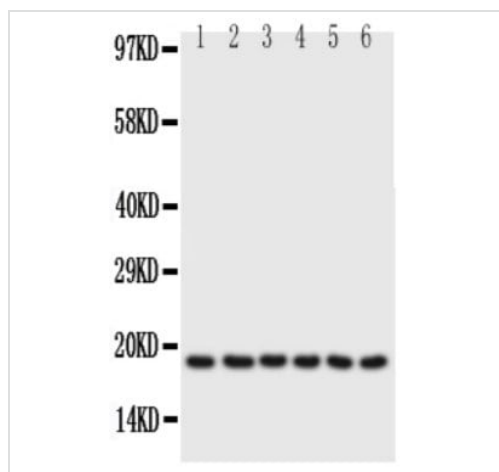
アプリケーションノートには、推奨の開始希釈率がありますが、適切な希釈率につきましてはご確認ください。

アプリケーション	Abreviews	特記事項
WB		Use a concentration of 1 µg/ml. Predicted molecular weight: 6 kDa.

## ターゲット情報

機能	Reversibly inhibits the activity of ATP2A2 in cardiac sarcoplasmic reticulum by decreasing the apparent affinity of the ATPase for Ca(2+). Modulates the contractility of the heart muscle in response to physiological stimuli via its effects on ATP2A2. Modulates calcium re-uptake during muscle relaxation and plays an important role in calcium homeostasis in the heart muscle. The degree of ATP2A2 inhibition depends on the oligomeric state of PLN. ATP2A2 inhibition is alleviated by PLN phosphorylation.
組織特異性	Heart muscle (at protein level).
関連疾患	Cardiomyopathy, dilated 1P Cardiomyopathy, familial hypertrophic 18
配列類似性	Belongs to the phospholamban family.
翻訳後修飾	Phosphorylation by PKA abolishes the inhibition of ATP2A2-mediated calcium uptake. Phosphorylated at Thr-17 by CaMK2, and in response to beta-adrenergic stimulation. Phosphorylation by DMPK may stimulate sarcoplasmic reticulum calcium uptake in cardiomyocytes.
細胞内局在	Endoplasmic reticulum membrane. Sarcoplasmic reticulum membrane. Mitochondrion membrane. Membrane. Colocalizes with HAX1 at the endoplasmic reticulum (PubMed:17241641). Colocalizes with DMPK a the sarcoplasmic reticulum (PubMed:15598648).

## 画像



Western blot - Anti-Phospholamban antibody  
(ab86930)

**All lanes :** Anti-Phospholamban antibody (ab86930) at 0.5 µg/ml

**Lanes 1-2 :** Rat Heart Tissue Lysate at 50 µg

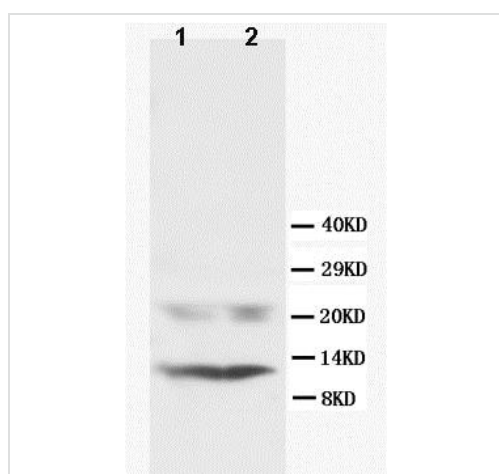
**Lane 3 :** CEM Whole Cell Lysate at 40 µg

**Lane 4 :** MCF-7 Whole Cell Lysate at 40 µg

**Lane 5 :** HT1080 Whole Cell Lysate at 40 µg

**Lane 6 :** HeLa Whole Cell Lysate at 40 µg

**Predicted band size:** 6 kDa



Western blot - Anti-Phospholamban antibody  
(ab86930)

**All lanes :** Anti-Phospholamban antibody (ab86930) at 1 µg/ml

**All lanes :** Rat heart tissue lysate

**Predicted band size:** 6 kDa

**Observed band size:** 11 kDa

**Please note:** All products are "FOR RESEARCH USE ONLY. NOT FOR USE IN DIAGNOSTIC PROCEDURES"

### Our Abpromise to you: Quality guaranteed and expert technical support

- Replacement or refund for products not performing as stated on the datasheet
- Valid for 12 months from date of delivery
- Response to your inquiry within 24 hours
- We provide support in Chinese, English, French, German, Japanese and Spanish
- Extensive multi-media technical resources to help you
- We investigate all quality concerns to ensure our products perform to the highest standards

If the product does not perform as described on this datasheet, we will offer a refund or replacement. For full details of the Abpromise, please visit <https://www.abcam.co.jp/abpromise> or contact our technical team.

## Terms and conditions

---

- Guarantee only valid for products bought direct from Abcam or one of our authorized distributors