

Anti-Phospho - (Ser/Thr) Phe antibody ab17464

★★★★★ 6 Abreviews 94 References 画像数 3

製品の概要

製品名	Anti-Phospho - (Ser/Thr) Phe antibody
製品の詳細	Rabbit polyclonal to Phospho - (Ser/Thr) Phe
由来種	Rabbit
アプリケーション	適用あり: ELISA, IP, WB, ICC/IF
種交差性	交差種: Species independent
免疫原	Synthetic peptide corresponding to Phospho - (Ser/Thr) Phe . Immunogen = Synthetic phospho-serine/threonine-phenylalanine containing peptide.
特記事項	<p>The immunogen used is specific phosphorylated serine or threonine amino acids surrounded by phenylalanine. (Y/F/W)(S*/T*)F</p> <p>The Life Science industry has been in the grips of a reproducibility crisis for a number of years. Abcam is leading the way in addressing this with our range of recombinant monoclonal antibodies and knockout edited cell lines for gold-standard validation. Please check that this product meets your needs before purchasing.</p> <p>If you have any questions, special requirements or concerns, please send us an inquiry and/or contact our Support team ahead of purchase. Recommended alternatives for this product can be found below, along with publications, customer reviews and Q&As</p>

製品の特性

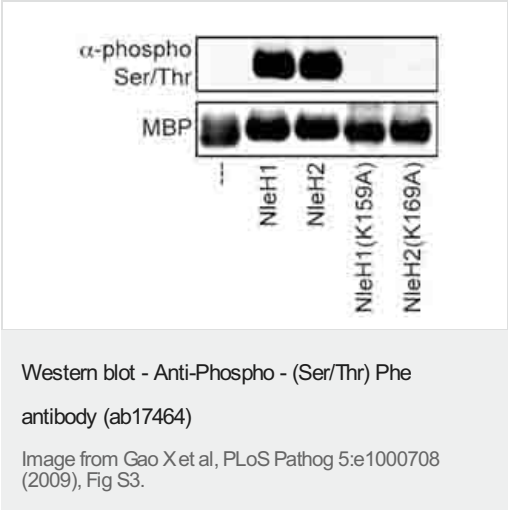
製品の状態	Liquid
保存方法	Shipped at 4°C. Upon delivery aliquot and store at -20°C. Avoid freeze / thaw cycles.
バッファー	pH: 7.50 Constituents: 0.238% HEPES, 50% Glycerol, 0.87% Sodium chloride, 0.01% BSA
精製度	Immunogen affinity purified
特記事項(精製)	Purified by Protein A and peptide affinity chromatography.
ポリモノ	ポリクローナル
アイソタイプ	IgG

アプリケーション

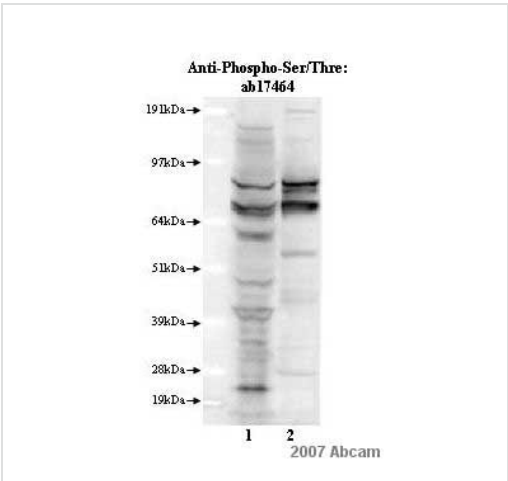
The Abpromise guarantee Abpromise保証は、 次のテスト済みアプリケーションにおけるab17464の使用に適用されます
アプリケーションノートには、推奨の開始希釈率がありますが、適切な希釈率につきましてはご確認ください。

アプリケーション	Abreviews	特記事項
ELISA		1/500.
IP		1/100.
WB	★★★★★ (5)	1/1000. Block with 5% nonfat milk, 0.1% Tween-20. Dilute primary antibody in 5% BSA, 0.1% Tween-20.
ICC/IF	★★★★★ (1)	Use at an assay dependent concentration.

画像



To determine if NleH could phosphorylate RPS3, we conducted in vitro kinase assays with NleH and RPR3 and analyzed the results by Immunoblotting with ab17464, phospho-Ser/Thr-specific antibody, following separation by SDS-PAGE.



All lanes : Anti-Phospho - (Ser/Thr) Phe antibody (ab17464) at 1/1000 dilution

Lane 1 : Human THP-1 Whole Cell Extract

Lane 2 : Mouse Total Lung Extract

Lysates/proteins at 10 µg per lane.

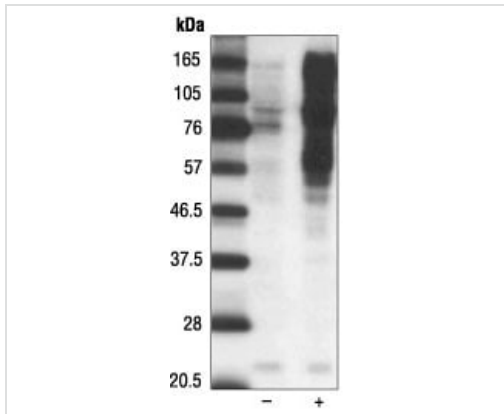
Secondary

All lanes : Alkaline phosphatase conjugated goat anti-rabbit antibody

Developed using the ECL technique.

Performed under reducing conditions.

Exposure time: 5 minutes



Western blot - Anti-Phospho - (Ser/Thr) Phe antibody (ab17464)

All lanes : Anti-Phospho - (Ser/Thr) Phe antibody (ab17464) at 1/1000 dilution

All lanes : calyculin A treated A431 cells

Please note: All products are "FOR RESEARCH USE ONLY. NOT FOR USE IN DIAGNOSTIC PROCEDURES"

Our Abpromise to you: Quality guaranteed and expert technical support

- Replacement or refund for products not performing as stated on the datasheet
- Valid for 12 months from date of delivery
- Response to your inquiry within 24 hours
- We provide support in Chinese, English, French, German, Japanese and Spanish
- Extensive multi-media technical resources to help you
- We investigate all quality concerns to ensure our products perform to the highest standards

If the product does not perform as described on this datasheet, we will offer a refund or replacement. For full details of the Abpromise, please visit <https://www.abcam.co.jp/abpromise> or contact our technical team.

Terms and conditions

- Guarantee only valid for products bought direct from Abcam or one of our authorized distributors