

Anti-PHGDH/Malate dehydrogenase antibody [4A3-1D6] ab57030

12 References **画像数 5**

製品の概要

製品名	Anti-PHGDH/Malate dehydrogenase antibody [4A3-1D6]
製品の詳細	Mouse monoclonal [4A3-1D6] to PHGDH/Malate dehydrogenase
由来種	Mouse
アプリケーション	適用あり: WB, ICC/IF, IHC-P, Flow Cyt, IP
種交差性	交差種: Human
免疫原	Recombinant full length protein corresponding to Human PHGDH/Malate dehydrogenase aa 1-550. Database link: O43175
特記事項	<p>This product was changed from ascites to tissue culture supernatant on 24/1/19. Please note that the dilutions may need to be adjusted accordingly. If you have any questions, please do not hesitate to contact our scientific support team.</p> <p>The Life Science industry has been in the grips of a reproducibility crisis for a number of years. Abcam is leading the way in addressing this with our range of recombinant monoclonal antibodies and knockout edited cell lines for gold-standard validation. Please check that this product meets your needs before purchasing.</p> <p>If you have any questions, special requirements or concerns, please send us an inquiry and/or contact our Support team ahead of purchase. Recommended alternatives for this product can be found below, along with publications, customer reviews and Q&As</p>

製品の特性

製品の状態	Liquid
保存方法	Shipped at 4°C. Upon delivery aliquot and store at -20°C or -80°C. Avoid repeated freeze / thaw cycles.
バッファー	pH: 7.4
精製度	Tissue culture supernatant
特記事項(精製)	Purified from TCS.
ポリ/モノ	モノクローナル
クローン名	4A3-1D6

アイソタイプ IgG1
 軽鎖の種類 kappa

アプリケーション

The Abpromise guarantee Abpromise保証は、 次のテスト済みアプリケーションにおけるab57030の使用に適用されます
 アプリケーションノートには、推奨の開始希釈率がありますが、適切な希釈率につきましてはご検討ください。

アプリケーション	Abreviews	特記事項
WB		Use at an assay dependent concentration. Predicted molecular weight: 57 kDa.
ICC/IF		Use at an assay dependent concentration.
IHC-P		Use at an assay dependent concentration.
Flow Cyt		Use at an assay dependent concentration. ab170190 - Mouse monoclonal IgG1, is suitable for use as an isotype control with this antibody.
IP		Use at an assay dependent concentration.

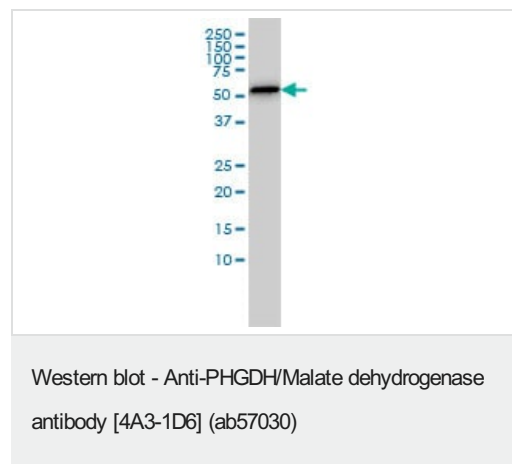
ターゲット情報

パスウェイ Amino-acid biosynthesis; L-serine biosynthesis; L-serine from 3-phospho-D-glycerate: step 1/3.

関連疾患 Defects in PHGDH are the cause of phosphoglycerate dehydrogenase deficiency (PHGDH deficiency) [MIM:601815]. It is characterized by congenital microcephaly, psychomotor retardation, and seizures.

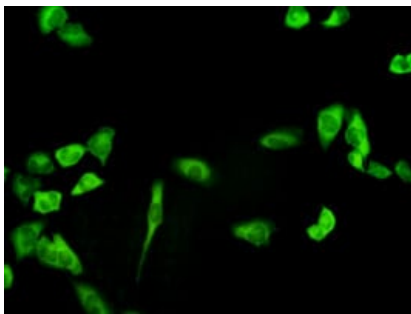
配列類似性 Belongs to the D-isomer specific 2-hydroxyacid dehydrogenase family.

画像



PHGDH/Malate dehydrogenase antibody (ab57030) at 1 µg/ml + Jurkat cell lysate at 25 µg/lane.

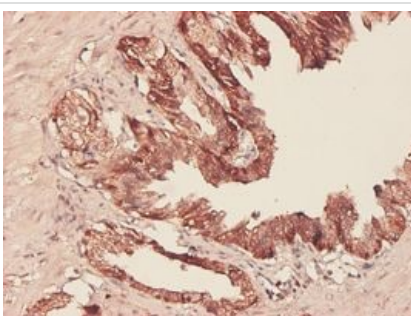
This image was generated using the ascites version of the product.



Immunocytochemistry/ Immunofluorescence - Anti-PHGDH/Malate dehydrogenase antibody [4A3-1D6] (ab57030)

PHGDH/Malate dehydrogenase antibody (ab57030) used in immunofluorescence at 1-5µg/ml on HeLa cells.

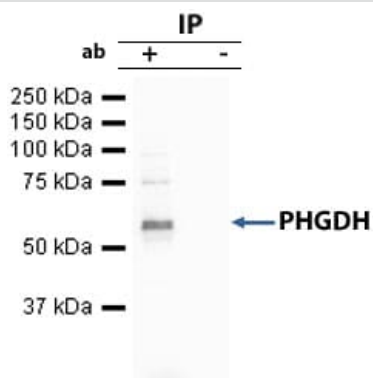
This image was generated using the ascites version of the product.



Immunohistochemistry (Formalin/PFA-fixed paraffin-embedded sections) - Anti-PHGDH/Malate dehydrogenase antibody [4A3-1D6] (ab57030)

PHGDH/Malate dehydrogenase antibody (ab57030) used in immunohistochemistry at 5µg/ml on formalin fixed and paraffin embedded human lymph node.

This image was generated using the ascites version of the product.



Immunoprecipitation - Anti-PHGDH/Malate dehydrogenase antibody [4A3-1D6] (ab57030)

PHGDH/Malate dehydrogenase was immunoprecipitated using 0.5mg Jurkat whole cell extract, 10µg of Mouse monoclonal to PHGDH/Malate dehydrogenase and 50µl of protein G magnetic beads (+). No antibody was added to the control (-).

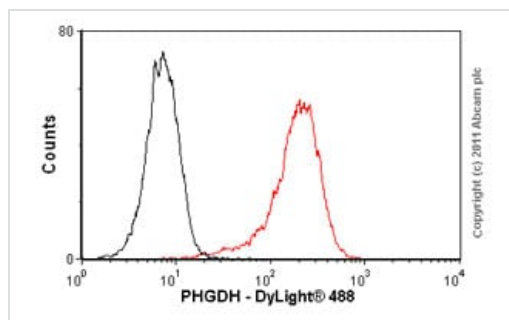
The antibody was incubated under agitation with Protein G beads for 10min, Jurkat whole cell extract lysate diluted in RIPA buffer was added to each sample and incubated for a further 10min under agitation.

Proteins were eluted by addition of 40µl SDS loading buffer and incubated for 10min at 70°C; 10µl of each sample was separated on a SDS PAGE gel, transferred to a nitrocellulose membrane, blocked with 5% BSA and probed with ab57030.

Secondary: Goat polyclonal to mouse IgG light chain specific (HRP) at 1/5000 dilution.

Band: 57kDa; PHGDH/Malate dehydrogenase.

This image was generated using the ascites version of the product.



Flow Cytometry - Anti-PHGDH/Malate dehydrogenase antibody [4A3-1D6] (ab57030)

Overlay histogram showing HeLa cells stained with ab57030 (red line). The cells were fixed with 80% methanol (5 min) and then permeabilized with 0.1% PBS-Tween for 20 min. The cells were then incubated in 1x PBS / 10% normal goat serum / 0.3M glycine to block non-specific protein-protein interactions followed by the antibody (ab57030, 1µg/1x10⁶ cells) for 30 min at 22°C. The secondary antibody used was DyLight® 488 goat anti-mouse IgG (H+L) ([ab96879](#)) at 1/500 dilution for 30 min at 22°C. Isotype control antibody (black line) was mouse IgG1 [ICIGG1] ([ab91353](#), 2µg/1x10⁶ cells) used under the same conditions. Acquisition of >5,000 events was performed.

This image was generated using the ascites version of the product.

Please note: All products are "FOR RESEARCH USE ONLY. NOT FOR USE IN DIAGNOSTIC PROCEDURES"

Our Abpromise to you: Quality guaranteed and expert technical support

- Replacement or refund for products not performing as stated on the datasheet
- Valid for 12 months from date of delivery
- Response to your inquiry within 24 hours
- We provide support in Chinese, English, French, German, Japanese and Spanish
- Extensive multi-media technical resources to help you
- We investigate all quality concerns to ensure our products perform to the highest standards

If the product does not perform as described on this datasheet, we will offer a refund or replacement. For full details of the Abpromise, please visit <https://www.abcam.co.jp/abpromise> or contact our technical team.

Terms and conditions

- Guarantee only valid for products bought direct from Abcam or one of our authorized distributors