




Anti-PGRMC1 antibody ab48012

★★★★★ [1 Abreviews](#) [15 References](#) [画像数 2](#)

製品の概要

製品名	Anti-PGRMC1 antibody
製品の詳細	Goat polyclonal to PGRMC1
由来種	Goat
アプリケーション	適用あり: WB
種交差性	交差種: Mouse, Human 交差が予測される動物種: Rat, Cow, Pig 
免疫原	Synthetic peptide: C-EPKDESARKND , corresponding to C terminal amino acids 185-195 of Human PGRMC1. <div>  Run BLAST with  Run BLAST with </div>
ポジティブ・コントロール	WB: Human kidney, liver and testis lysates. Mouse testis.
特記事項	<p>The Life Science industry has been in the grips of a reproducibility crisis for a number of years. Abcam is leading the way in addressing this with our range of recombinant monoclonal antibodies and knockout edited cell lines for gold-standard validation. Please check that this product meets your needs before purchasing.</p> <p>If you have any questions, special requirements or concerns, please send us an inquiry and/or contact our Support team ahead of purchase. Recommended alternatives for this product can be found below, along with publications, customer reviews and Q&As</p>

製品の特性

製品の状態	Liquid
保存方法	Shipped at 4°C. Upon delivery aliquot and store at -20°C or -80°C. Avoid repeated freeze / thaw cycles.
バッファー	pH: 7.30 Preservative: 0.02% Sodium azide Constituents: 0.05% Tris buffered saline, 0.5% BSA
精製度	Immunogen affinity purified
特記事項(精製)	Purified from goat serum by ammonium sulphate precipitation followed by antigen affinity chromatography using the immunizing peptide.

ポリ/モノ ポリクローナル
アイソタイプ IgG

アプリケーション

The Abpromise guarantee **Abpromise保証は、** 次のテスト済みアプリケーションにおけるab48012の使用に適用されます
アプリケーションノートには、推奨の開始希釈率がありますが、適切な希釈率につきましてはご検討ください。

アプリケーション	Abreviews	特記事項
WB		Use a concentration of 0.1 - 0.33 µg/ml. Detects a band of approximately 25 kDa (predicted molecular weight: 22 kDa). A 1 hour primary incubation at room temperature is recommended for this product.

ターゲット情報

機能 Receptor for progesterone.

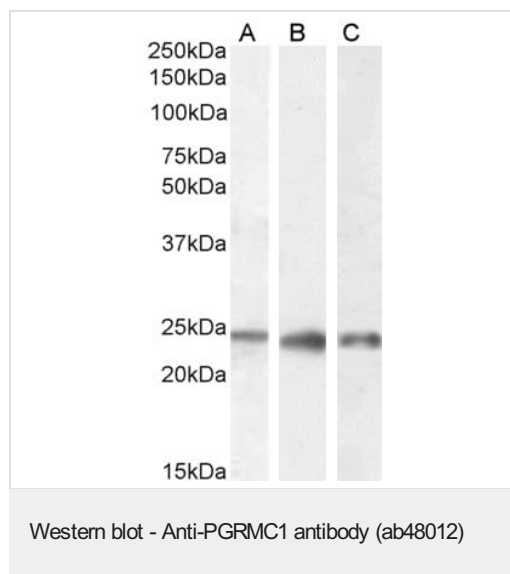
組織特異性 Widely expressed, with highest expression in liver and kidney.

配列類似性 Belongs to the cytochrome b5 family. MAPR subfamily.
Contains 1 cytochrome b5 heme-binding domain.

ドメイン The cytochrome b5 heme-binding domain lacks the conserved iron-binding His residues at positions 107 and 131.

細胞内局在 Microsome membrane. Endoplasmic reticulum membrane.

画像



All lanes : Anti-PGRMC1 antibody (ab48012) at 0.1 µg/ml

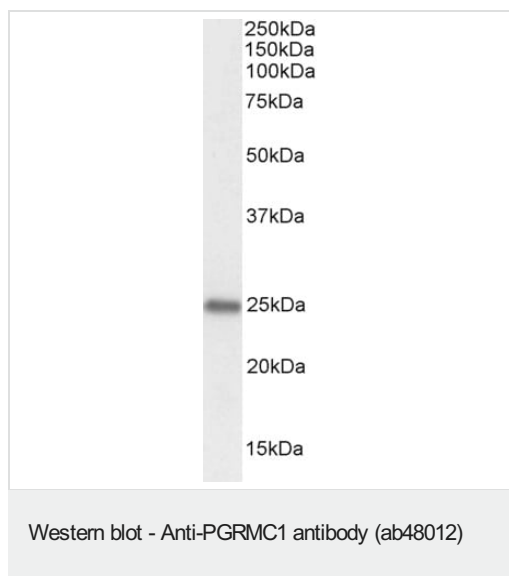
Lane 1 : Human Kidney

Lane 2 : Human Liver

Lane 3 : Human Testes

Lysates/proteins at 35 µg per lane.

Predicted band size: 22 kDa



Anti-PGRMC1 antibody (ab48012) at 0.1 µg/ml + Mouse Testes at 35 µg

Predicted band size: 22 kDa

Please note: All products are "FOR RESEARCH USE ONLY. NOT FOR USE IN DIAGNOSTIC PROCEDURES"

Our Abpromise to you: Quality guaranteed and expert technical support

- Replacement or refund for products not performing as stated on the datasheet
- Valid for 12 months from date of delivery
- Response to your inquiry within 24 hours
- We provide support in Chinese, English, French, German, Japanese and Spanish
- Extensive multi-media technical resources to help you
- We investigate all quality concerns to ensure our products perform to the highest standards

If the product does not perform as described on this datasheet, we will offer a refund or replacement. For full details of the Abpromise, please visit <https://www.abcam.co.jp/abpromise> or contact our technical team.

Terms and conditions

- Guarantee only valid for products bought direct from Abcam or one of our authorized distributors