


### Anti-PGP9.5 antibody [346CT2.5.1] ab86808

KO 評価済

★★★★★ [5 Abreviews](#) [3 References](#) [画像数 3](#)

#### 製品の概要

製品名	Anti-PGP9.5 antibody [346CT2.5.1]
製品の詳細	Mouse monoclonal [346CT2.5.1] to PGP9.5
由来種	Mouse
アプリケーション	適用あり: ICC/IF, Flow Cyt (Intra), WB
種交差性	交差種: Rat, Human 交差が予測される動物種: Mouse, Goat, Horse, Cat, Dog, Pig 
免疫原	Recombinant full length protein corresponding to Human PGP9.5 aa 1 to the C-terminus.
ポジティブ・コントロール	This antibody gave a positive signal in the following lysates: Human Brain Tissue; Rat Brain Tissue; Rat Brain Cortex Tissue; PC12 Whole Cell; Y79 Whole Cell; U-87MG Whole Cell; SHSY-5Y Whole Cell and HAP1 Wole cells.
特記事項	<p>This monoclonal antibody to PGP9.5 has been knockout validated in Western blot. The expected band for PGP9.5 was observed in wild type cells and the band was not seen in knockout cells.</p> <p>This antibody clone is manufactured by Abcam. If you require a custom buffer formulation or conjugation for your experiments, please contact <a href="mailto:orders@abcam.com">orders@abcam.com</a>.</p> <p>The Life Science industry has been in the grips of a reproducibility crisis for a number of years. Abcam is leading the way in addressing this with our range of recombinant monoclonal antibodies and knockout edited cell lines for gold-standard validation. Please check that this product meets your needs before purchasing.</p> <p>If you have any questions, special requirements or concerns, please send us an inquiry and/or contact our Support team ahead of purchase. Recommended alternatives for this product can be found below, along with publications, customer reviews and Q&amp;As</p>

#### 製品の特性

製品の状態	Liquid
保存方法	Shipped at 4°C. Upon delivery aliquot and store at -20°C. Avoid freeze / thaw cycles.
バッファー	<p>pH: 7.2</p> <p>Preservative: 0.02% Sodium azide</p> <p>Constituent: PBS</p>

精製度	Protein G purified
ポリ/モノ	モノクローナル
クローン名	346CT2.5.1
ミエローマ	Sp2/0
アイソタイプ	IgG1

アプリケーション

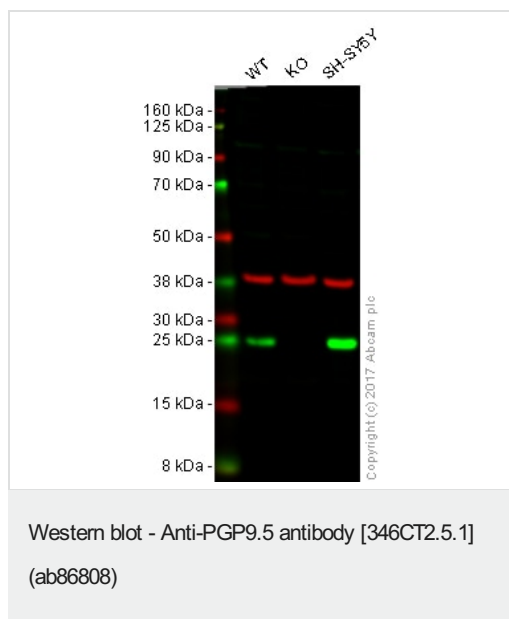
The Abpromise guarantee      Abpromise保証は、次のテスト済みアプリケーションにおけるab86808の使用に適用されます  
 アプリケーションノートには、推奨の開始希釈率がありますが、適切な希釈率につきましてはご検討ください。

アプリケーション	Abreviews	特記事項
ICC/IF	★★★★★ (1)	Use at an assay dependent concentration.
Flow Cyt (Intra)		Use 0.01-0.1µg for 10 <sup>6</sup> cells. <b>ab170190</b> - Mouse monoclonal IgG1, is suitable for use as an isotype control with this antibody.
WB		Use a concentration of 1 µg/ml. Detects a band of approximately 25 kDa (predicted molecular weight: 25 kDa). Abcam recommends blocking with 3% Milk.

ターゲット情報

機能	Ubiquitin-protein hydrolase involved both in the processing of ubiquitin precursors and of ubiquitinated proteins. This enzyme is a thiol protease that recognizes and hydrolyzes a peptide bond at the C-terminal glycine of ubiquitin. Also binds to free monoubiquitin and may prevent its degradation in lysosomes. The homodimer may have ATP-independent ubiquitin ligase activity.
組織特異性	Found in neuronal cell bodies and processes throughout the neocortex (at protein level). Expressed in neurons and cells of the diffuse neuroendocrine system and their tumors. Weakly expressed in ovary. Down-regulated in brains from Parkinson disease and Alzheimer disease patients.
関連疾患	Parkinson disease 5 Neurodegeneration with optic atrophy, childhood-onset
配列類似性	Belongs to the peptidase C12 family.
翻訳後修飾	O-glycosylated.
細胞内局在	Cytoplasm. Endoplasmic reticulum membrane. About 30% of total UCHL1 is associated with membranes in brain.

画像



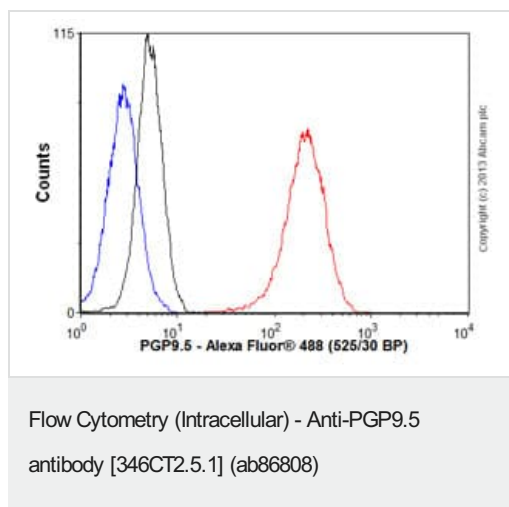
**Lane 1:** Wild type HAP1 whole cell lysate (20 µg)

**Lane 2:** UCHL1 (KO) knockout HAP1 whole cell lysate (20 µg)

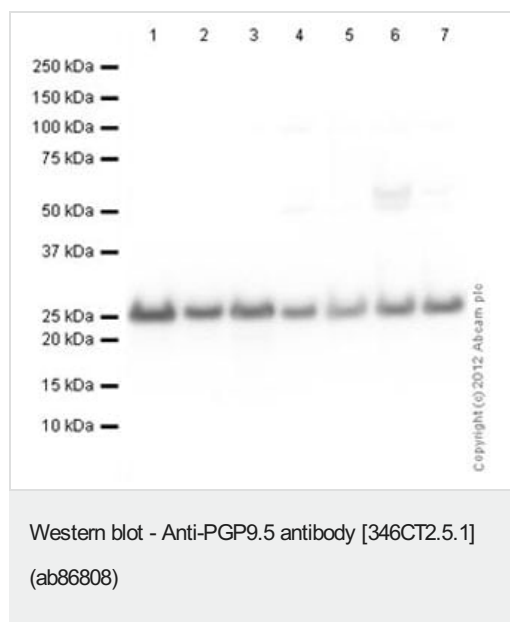
**Lane 3:** SH-SY5Y whole cell lysate (20 µg)

**Lanes 1 - 3:** Merged signal (red and green). Green - ab86808 observed at 24 kDa. Red - loading control, **ab181602**, observed at 37 kDa.

Ab86808 was shown to specifically react with PGP9.5/UCHL1 in wild-type cells as signal was lost in PGP9/UCHL1 knockout HAP1 cells. Wild-type and UCHL1 (KO) knockout samples were subjected to SDS-PAGE. Ab86808 and **ab181602** (Rabbit anti GAPDH loading control) were incubated overnight at 4°C at 1 µg/ml and 1/2000 dilution respectively. Blots were developed with Goat anti-Mouse IgG H&L (IRDye® 800CW) preabsorbed **ab216772** and Goat anti-Rabbit IgG H&L (IRDye® 680RD) preabsorbed **ab216777** secondary antibodies at 1/10000 dilution for 1 hour at room temperature before imaging.



Overlay histogram showing SH-SY5Y cells stained with ab86808 (red line). The cells were fixed with 80% methanol (5 min) and then permeabilized with 0.1% PBS-Tween for 20 min. The cells were then incubated in 1x PBS / 10% normal goat serum / 0.3M glycine to block non-specific protein-protein interactions followed by the antibody (ab86808, 0.1 µg/1x10<sup>6</sup> cells) for 30 min at 22°C. The secondary antibody used was Alexa Fluor® 488 goat anti-mouse IgG (H&L) (**ab150113**) at 1/2000 dilution for 30 min at 22°C. Isotype control antibody (black line) was mouse IgG1 [ICIGG1] (**ab91353**, 1 µg/1x10<sup>6</sup> cells) used under the same conditions. Unlabelled sample (blue line) was also used as a control. Acquisition of >5,000 events were collected using a 20mW Argon ion laser (488nm) and 525/30 bandpass filter. This antibody gave a positive signal in SH-SY5Y cells fixed with 4% paraformaldehyde (10 min)/permeabilized with 0.1% PBS-Tween for 20 min used under the same conditions.



**All lanes :** Anti-PGP9.5 antibody [346CT2.5.1] (ab86808) at 1 µg/ml

**Lane 1 :** Human brain tissue lysate - total protein ([ab29466](#))

**Lane 2 :** Brain (Rat) Tissue Lysate

**Lane 3 :** Rat Cortex Tissue Lysate

**Lane 4 :** PC12 (Rat adrenal pheochromocytoma cell line) Whole Cell Lysate

**Lane 5 :** Y79 (Human retinoblastoma cell line) Whole Cell Lysate

**Lane 6 :** U-87 MG (Human glioblastoma astrocytoma) Whole Cell Lysate

**Lane 7 :** SHSY-5Y (Human neuroblastoma cell line) Whole Cell Lysate

Lysates/proteins at 20 µg per lane.

### Secondary

**All lanes :** Goat Anti-Mouse IgG H&L (HRP) preadsorbed ([ab97040](#)) at 1/5000 dilution

Developed using the ECL technique.

Performed under reducing conditions.

**Predicted band size:** 25 kDa

**Observed band size:** 25 kDa

**Exposure time:** 1 minute

**Please note:** All products are "FOR RESEARCH USE ONLY. NOT FOR USE IN DIAGNOSTIC PROCEDURES"

### Our Promise to you: Quality guaranteed and expert technical support

- Replacement or refund for products not performing as stated on the datasheet
- Valid for 12 months from date of delivery

- Response to your inquiry within 24 hours
- We provide support in Chinese, English, French, German, Japanese and Spanish
- Extensive multi-media technical resources to help you
- We investigate all quality concerns to ensure our products perform to the highest standards

If the product does not perform as described on this datasheet, we will offer a refund or replacement. For full details of the Abpromise, please visit <https://www.abcam.co.jp/abpromise> or contact our technical team.

#### **Terms and conditions**

---

- Guarantee only valid for products bought direct from Abcam or one of our authorized distributors