

Anti-PFKP antibody [OT1D6] ab119796

KO 評価済

13 References [画像数 13](#)

製品の概要

製品名	Anti-PFKP antibody [OT1D6]
製品の詳細	Mouse monoclonal [OT1D6] to PFKP
由来種	Mouse
アプリケーション	適用あり: WB, IHC-P, ICC/IF, Flow Cyt (Intra)
種交差性	交差種: Mouse, Rat, Human, Recombinant fragment
免疫原	Recombinant full length Human PFKP produced in HEK293T cells (NP_002618).
ポジティブ・コントロール	HEK293T cell lysate transfected with pCMV6-ENTRY PFKP; SVT2, A549, Jurkat, PC12 and MCF7 cell extracts; Human colon adenocarcinoma, kidney carcinoma, lung carcinoma, ovary adenocarcinoma, endometrium, endometrium adenocarcinoma, bladder carcinoma and tonsil tissues; COS7 cells transiently transfected with pCMV6-ENTRY PFKP; Jurkat cells.
特記事項	<p>The clone number has been updated from 1D6 to OT1D6, both clone numbers name the same clone.</p> <p>Dilute in PBS (pH 7.3) before use.</p> <p>The Life Science industry has been in the grips of a reproducibility crisis for a number of years. Abcam is leading the way in addressing this with our range of recombinant monoclonal antibodies and knockout edited cell lines for gold-standard validation. Please check that this product meets your needs before purchasing.</p> <p>If you have any questions, special requirements or concerns, please send us an inquiry and/or contact our Support team ahead of purchase. Recommended alternatives for this product can be found below, along with publications, customer reviews and Q&As</p>

製品の特性

製品の状態	Liquid
保存方法	Shipped at 4°C. Store at +4°C short term (1-2 weeks). Upon delivery aliquot. Store at -20°C long term.
バッファー	<p>pH: 7.30</p> <p>Preservative: 0.02% Sodium azide</p> <p>Constituents: 48% PBS, 1% BSA, 50% Glycerol</p>

精製度	Protein G purified
特記事項(精製)	Purified from TCS
ポリ/モノ	モノクローナル
クローン名	OT11D6
アイソタイプ	IgG1

アプリケーション

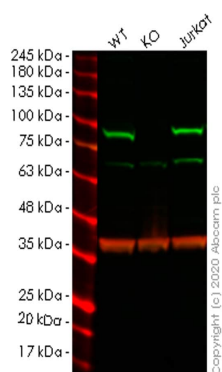
The Abpromise guarantee Abpromise保証は、次のテスト済みアプリケーションにおけるab119796の使用に適用されます
 アプリケーションノートには、推奨の開始希釈率がありますが、適切な希釈率につきましてはご検討ください。

アプリケーション	Abreviews	特記事項
WB		1/500 - 1/2000. Predicted molecular weight: 86 kDa.
IHC-P		1/150.
ICC/IF		1/100.
Flow Cyt (Intra)		1/100. ab170190 - Mouse monoclonal IgG1, is suitable for use as an isotype control with this antibody.

ターゲット情報

パスウェイ	Carbohydrate degradation; glycolysis; D-glyceraldehyde 3-phosphate and glycerone phosphate from D-glucose: step 3/4.
配列類似性	Belongs to the phosphofructokinase family. Two domains subfamily.

画像



Western blot - Anti-PFKP antibody [OT11D6]
(ab119796)

All lanes : Anti-PFKP antibody [OT11D6] (ab119796) at 1/1000 dilution

Lane 1 : Wild-type HeLa cell lysate

Lane 2 : PFKP knockout HeLa cell lysate

Lane 3 : Jurkat cell lysate

Lysates/proteins at 20 µg per lane.

Secondary

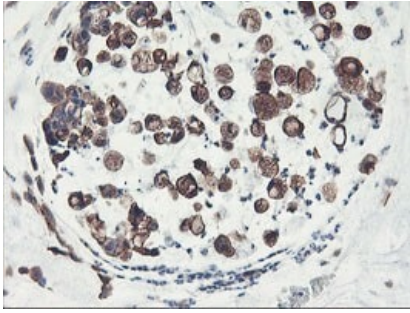
All lanes : Goat Anti-Rabbit IgG H&L (IRDye® 680RD) preadsorbed ([ab216777](#)) at 1/10000 dilution

Predicted band size: 86 kDa

Observed band size: 86 kDa

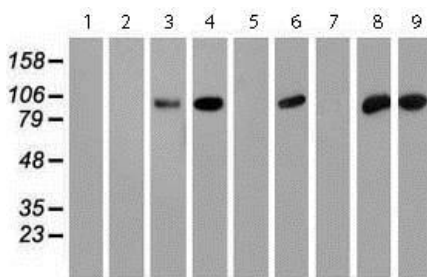
Lanes 1-3: Merged signal (red and green). Green - ab119796 observed at 86 kDa. Red - loading control [ab181602](#) observed at 36 kDa.

ab119796 Anti-PFKP antibody [OT11D6] was shown to specifically react with PFKP in wild-type HeLa cells. Loss of signal was observed when knockout cell line [ab265136](#) (knockout cell lysate [ab257580](#)) was used. Wild-type and PFKP knockout samples were subjected to SDS-PAGE. ab119796 and Anti-GAPDH antibody[EPR16891] - Loading Control ([ab181602](#)) were incubated overnight at 4°C at 1 in 1000 dilution and 1 in 20000 dilution respectively. Blots were developed with Goat anti-Rabbit IgG H&L (IRDye® 680RD) preadsorbed ([ab216777](#)) and Goat anti-Mouse IgG H&L (IRDye® 800CW) preadsorbed ([ab216772](#)) secondary antibodies at 1 in 20000 dilution for 1 hour at room temperature before imaging.



Immunohistochemistry (Formalin/PFA-fixed paraffin-embedded sections) - Anti-PFKP antibody [OT11D6] (ab119796)

ab119796 at 1/150 dilution staining PFKP in Paraffin-embedded Human Colon tissue by Immunohistochemistry.



Western blot - Anti-PFKP antibody [OT11D6] (ab119796)

All lanes : Anti-PFKP antibody [OT11D6] (ab119796) at 1/500 dilution

Lane 1 : HepG2 cell extract

Lane 2 : HeLa cell extract

Lane 3 : SVT2 cell extract

Lane 4 : A549 cell extract

Lane 5 : COS7 cell extract

Lane 6 : Jurkat cell extract

Lane 7 : MDCK cell extract

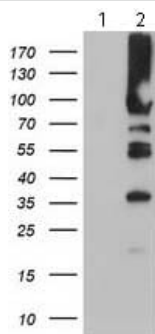
Lane 8 : PC12 cell extract

Lane 9 : MCF7 cell extract

Lysates/proteins at 35 µg per lane.

Predicted band size: 86 kDa

HEK293T cell lysates were generated from transient transfection of the cDNA clone (RC200673)



Western blot - Anti-PFKP antibody [OT11D6]
(ab119796)

All lanes : Anti-PFKP antibody [OT11D6] (ab119796) at 1/500 dilution

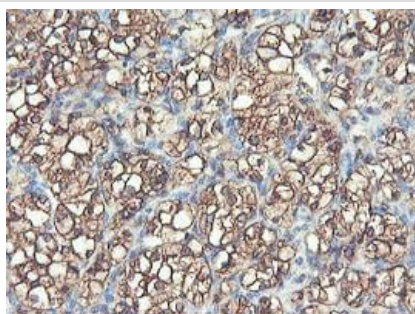
Lane 1 : HEK293T cell lysate transfected with pCMV6-ENTRY control cDNA

Lane 2 : HEK293T cell lysate transfected with pCMV6-ENTRY PFKP cDNA

Lysates/proteins at 5 µg per lane.

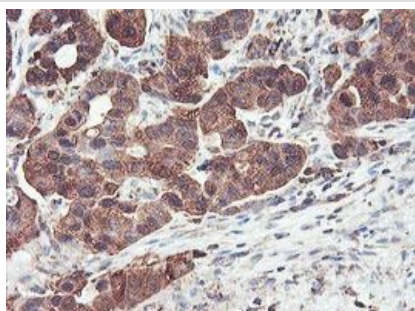
Predicted band size: 86 kDa

HEK293T cell lysates were generated from transient transfection of the cDNA clone (RC200673)



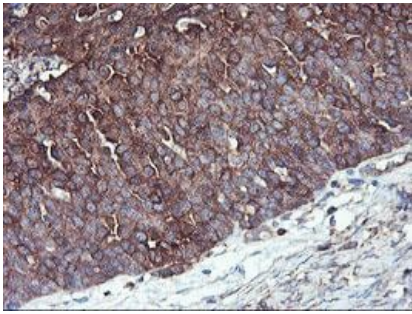
Immunohistochemistry (Formalin/PFA-fixed paraffin-embedded sections) - Anti-PFKP antibody [OT11D6]
(ab119796)

ab119796 at 1/150 dilution staining PFKP in Paraffin-embedded Human Kidney carcinoma tissue by Immunohistochemistry.



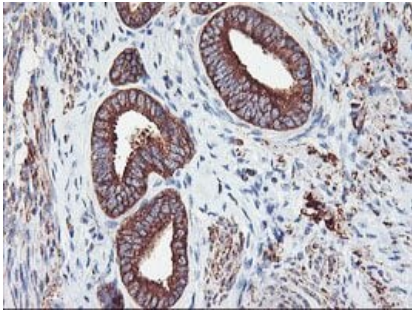
Immunohistochemistry (Formalin/PFA-fixed paraffin-embedded sections) - Anti-PFKP antibody [OT11D6]
(ab119796)

ab119796 at 1/150 dilution staining PFKP in Paraffin-embedded Human Lung carcinoma tissue by Immunohistochemistry.



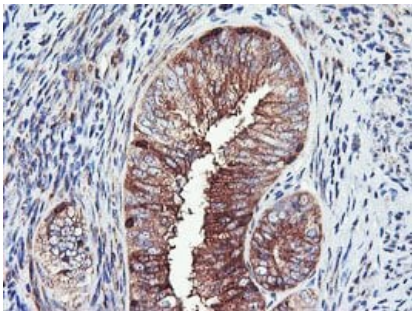
ab119796 at 1/150 dilution staining PFKP in Paraffin-embedded Human Ovary adenocarcinoma tissue by Immunohistochemistry.

Immunohistochemistry (Formalin/PFA-fixed paraffin-embedded sections) - Anti-PFKP antibody [OT11D6] (ab119796)



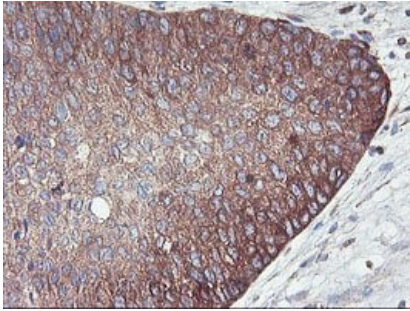
ab119796 at 1/150 dilution staining PFKP in Paraffin-embedded Human Endometrium tissue by Immunohistochemistry.

Immunohistochemistry (Formalin/PFA-fixed paraffin-embedded sections) - Anti-PFKP antibody [OT11D6] (ab119796)



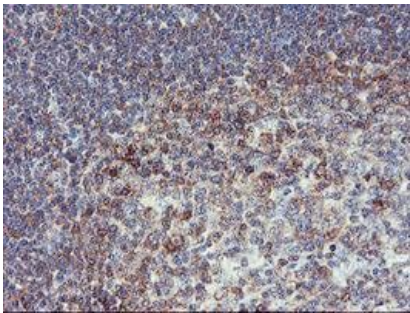
ab119796 at 1/150 dilution staining PFKP in Paraffin-embedded Human Endometrium adenocarcinoma tissue by Immunohistochemistry.

Immunohistochemistry (Formalin/PFA-fixed paraffin-embedded sections) - Anti-PFKP antibody [OT11D6] (ab119796)



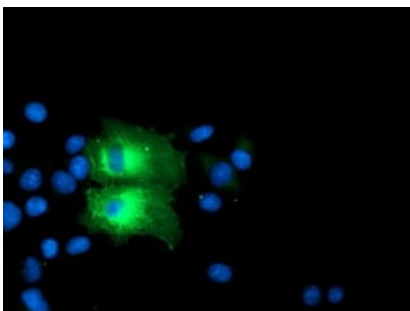
ab119796 at 1/150 dilution staining PFKP in Paraffin-embedded Human Bladder carcinoma tissue by Immunohistochemistry.

Immunohistochemistry (Formalin/PFA-fixed paraffin-embedded sections) - Anti-PFKP antibody [OT1D6] (ab119796)



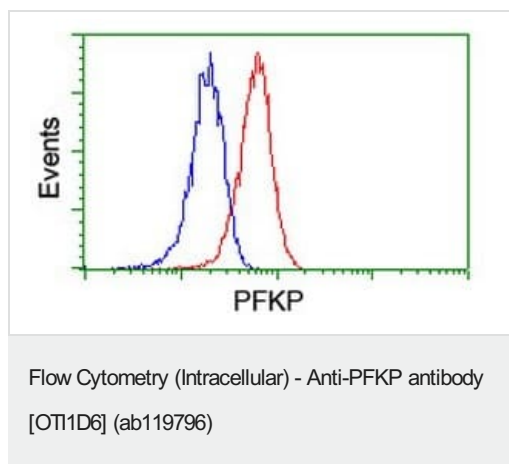
ab119796 at 1/150 dilution staining PFKP in Paraffin-embedded Human Tonsil tissue by Immunohistochemistry.

Immunohistochemistry (Formalin/PFA-fixed paraffin-embedded sections) - Anti-PFKP antibody [OT1D6] (ab119796)



ab119796 at 1/100 dilution staining PFKP in COS7 cells transiently transfected with pCMV6-ENTRY PFKP by Immunofluorescence.

Immunocytochemistry/ Immunofluorescence - Anti-PFKP antibody [OT1D6] (ab119796)



ab119796 at 1/100 dilution staining PFKP in Jurkat cells by Flow Cytometry (Intracellular) (Red) compared to a nonspecific negative control antibody (Blue).

Please note: All products are "FOR RESEARCH USE ONLY. NOT FOR USE IN DIAGNOSTIC PROCEDURES"

Our Abpromise to you: Quality guaranteed and expert technical support

- Replacement or refund for products not performing as stated on the datasheet
- Valid for 12 months from date of delivery
- Response to your inquiry within 24 hours
- We provide support in Chinese, English, French, German, Japanese and Spanish
- Extensive multi-media technical resources to help you
- We investigate all quality concerns to ensure our products perform to the highest standards

If the product does not perform as described on this datasheet, we will offer a refund or replacement. For full details of the Abpromise, please visit <https://www.abcam.co.jp/abpromise> or contact our technical team.

Terms and conditions

- Guarantee only valid for products bought direct from Abcam or one of our authorized distributors