

Anti-PFKFB3 antibody ab96699

6 References [画像数 2](#)

医薬用外劇物

製品の概要

製品名	Anti-PFKFB3 antibody
製品の詳細	Rabbit polyclonal to PFKFB3
由来種	Rabbit
アプリケーション	<b>適用あり:</b> IP, WB
種交差性	<b>交差種:</b> Human
免疫原	Synthetic peptide, corresponding to a region within amino acids 457 and 520 of Human PFKFB3 (NP_004557).
特記事項	<p>The Life Science industry has been in the grips of a reproducibility crisis for a number of years. Abcam is leading the way in addressing this with our range of recombinant monoclonal antibodies and knockout edited cell lines for gold-standard validation. Please check that this product meets your needs before purchasing.</p> <p>If you have any questions, special requirements or concerns, please send us an inquiry and/or contact our Support team ahead of purchase. Recommended alternatives for this product can be found below, along with publications, customer reviews and Q&amp;As</p>

製品の特性

製品の状態	Liquid
保存方法	Shipped at 4°C. Upon delivery aliquot. Store at -20°C or -80°C. Avoid freeze / thaw cycle.
バッファー	pH: 7.00 Preservative: 0.01% Thimerosal (merthiolate) Constituents: 1.21% Tris, 0.75% Glycine, 10% Glycerol (glycerin, glycerine)
精製度	Immunogen affinity purified
ポリ/モノ	ポリクローナル
アイソタイプ	IgG

アプリケーション

The Abpromise guarantee Abpromise保証は、次のテスト済みアプリケーションにおけるab96699の使用に適用されます

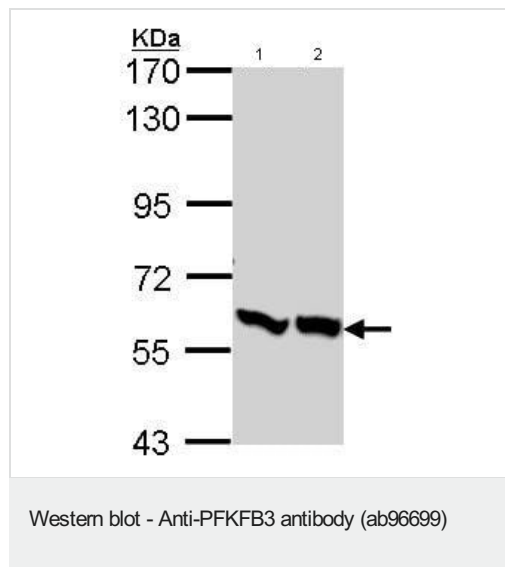
アプリケーションノートには、推奨の開始希釈率がありますが、適切な希釈率につきましてはご確認ください。

アプリケーション	Abreviews	特記事項
IP		Use at an assay dependent concentration.
WB		1/500 - 1/3000. Predicted molecular weight: 60 kDa.

### ターゲット情報

機能	Synthesis and degradation of fructose 2,6-bisphosphate.
組織特異性	Ubiquitous.
配列類似性	In the C-terminal section; belongs to the phosphoglycerate mutase family.
翻訳後修飾	Phosphorylation by AMPK stimulates activity.

### 画像



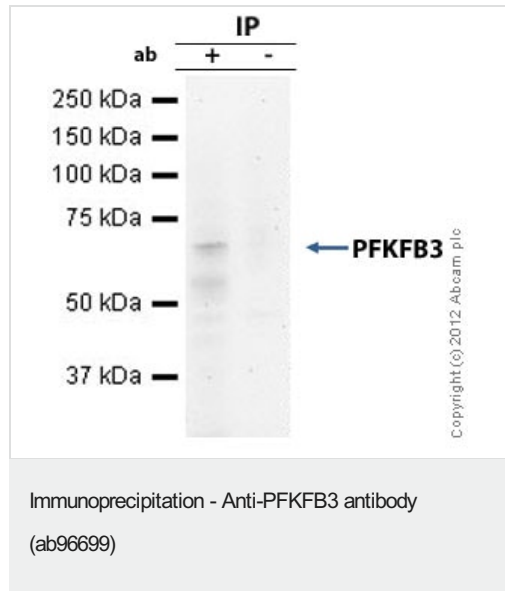
**All lanes :** Anti-PFKFB3 antibody (ab96699) at 1/1000 dilution

**Lane 1 :** A431 whole cell lysate

**Lane 2 :** H1299 whole cell lysate

Lysates/proteins at 30 µg per lane.

**Predicted band size:** 60 kDa



PFKFB3 was immunoprecipitated using 0.5mg A431 whole cell extract, 5µg of Rabbit polyclonal to PFKFB3 and 50µl of protein G magnetic beads (+). No antibody was added to the control (-). The antibody was incubated under agitation with Protein G beads for 10min, A431 whole cell extract lysate diluted in RIPA buffer was added to each sample and incubated for a further 10min under agitation. Proteins were eluted by addition of 40µl SDS loading buffer and incubated for 10min at 70°C; 10µl of each sample was separated on a SDS PAGE gel, transferred to a nitrocellulose membrane, blocked with 5% BSA and probed with ab96699. Secondary: Mouse monoclonal [SB62a] Secondary Antibody to Rabbit IgG light chain (HRP) ([ab99697](#)).

Band: 70kDa: PFKFB3.

**Please note:** All products are "FOR RESEARCH USE ONLY. NOT FOR USE IN DIAGNOSTIC PROCEDURES"

#### **Our Abpromise to you: Quality guaranteed and expert technical support**

---

- Replacement or refund for products not performing as stated on the datasheet
- Valid for 12 months from date of delivery
- Response to your inquiry within 24 hours
- We provide support in Chinese, English, French, German, Japanese and Spanish
- Extensive multi-media technical resources to help you
- We investigate all quality concerns to ensure our products perform to the highest standards

If the product does not perform as described on this datasheet, we will offer a refund or replacement. For full details of the Abpromise, please visit <https://www.abcam.co.jp/abpromise> or contact our technical team.

#### **Terms and conditions**

---

- Guarantee only valid for products bought direct from Abcam or one of our authorized distributors