

### Anti-PERK antibody ab65142

★★★★☆ [2 Abreviews](#) [61 References](#) [画像数 2](#)

#### 製品の概要

---

製品名	Anti-PERK antibody
製品の詳細	Rabbit polyclonal to PERK
由来種	Rabbit
アプリケーション	<b>適用あり:</b> ICC/IF, WB
種交差性	<b>交差種:</b> Human
免疫原	A synthesized peptide derived from an internal region of human PERK
特記事項	<p>The Life Science industry has been in the grips of a reproducibility crisis for a number of years. Abcam is leading the way in addressing this with our range of recombinant monoclonal antibodies and knockout edited cell lines for gold-standard validation. Please check that this product meets your needs before purchasing.</p> <p>If you have any questions, special requirements or concerns, please send us an inquiry and/or contact our Support team ahead of purchase. Recommended alternatives for this product can be found below, along with publications, customer reviews and Q&amp;As</p>

#### 製品の特性

---

製品の状態	Liquid
保存方法	Shipped at 4°C. Store at -20°C. Stable for 12 months at -20°C.
バッファー	pH: 7.40 Preservative: 0.02% Sodium azide Constituents: PBS, 50% Glycerol, 0.87% Sodium chloride
精製度	Without Mg <sup>2+</sup> and Ca <sup>2+</sup> Immunogen affinity purified
ポリ/モノ	ポリクローナル
アイソタイプ	IgG

#### アプリケーション

---

The Abpromise guarantee

**Abpromise保証は、次のテスト済みアプリケーションにおけるab65142の使用に適用されます**

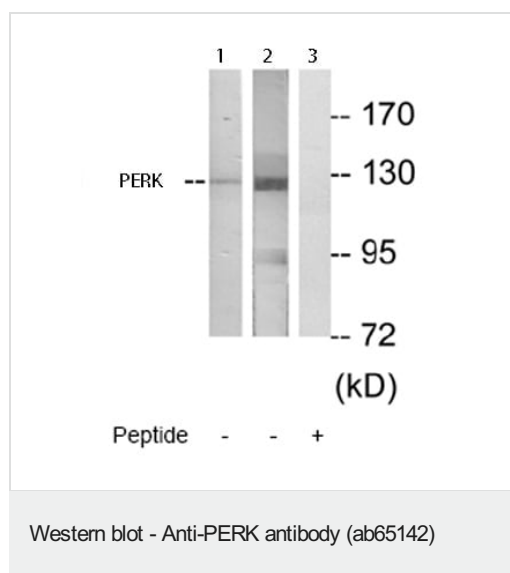
アプリケーションノートには、推奨の開始希釈率がありますが、適切な希釈率につきましてはご確認ください。

アプリケーション	Abreviews	特記事項
ICC/IF	★☆☆☆☆ (1)	1/500 - 1/1000.
WB	★★★★★ (1)	1/500 - 1/1000. Detects a band of approximately 125 kDa (predicted molecular weight: 125 kDa).

## ターゲット情報

<b>機能</b>	Phosphorylates the alpha subunit of eukaryotic translation-initiation factor 2 (EIF2), leading to its inactivation and thus to a rapid reduction of translational initiation and repression of global protein synthesis. Serves as a critical effector of unfolded protein response (UPR)-induced G1 growth arrest due to the loss of cyclin D1.
<b>組織特異性</b>	Ubiquitous. A high level expression is seen in secretory tissues.
<b>関連疾患</b>	Defects in EIF2AK3 are the cause of Wolcott-Rallison syndrome (WRS) [MIM:226980]; also known as multiple epiphyseal dysplasia with early-onset diabetes mellitus. WRS is a rare autosomal recessive disorder, characterized by permanent neonatal or early infancy insulin-dependent diabetes and, at a later age, epiphyseal dysplasia, osteoporosis, growth retardation and other multisystem manifestations, such as hepatic and renal dysfunctions, mental retardation and cardiovascular abnormalities.
<b>配列類似性</b>	Belongs to the protein kinase superfamily. Ser/Thr protein kinase family. GCN2 subfamily. Contains 1 protein kinase domain.
<b>ドメイン</b>	The luminal domain senses perturbations in protein folding in the ER, probably through reversible interaction with HSPA5/BIP.
<b>翻訳後修飾</b>	Autophosphorylated. N-glycosylated.
<b>細胞内局在</b>	Endoplasmic reticulum membrane.

## 画像



**All lanes :** Anti-PERK antibody (ab65142) at 1/500 dilution

**Lane 1 :** Extracts from HeLa cells

**Lane 2 :** Extracts from HepG2 cells

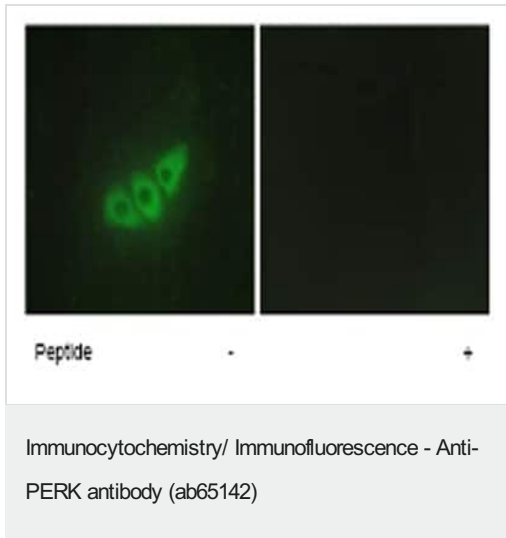
**Lane 3 :** Extracts from HepG2 cells, plus immunising peptide

**Predicted band size:** 125 kDa

**Observed band size:** 125 kDa

The amount of positive control loading for the WB is 5-30 ug of total protein.

The amount of the peptide for the WB is 5-10 ug.



Immunofluorescence analysis of HepG2 cells using ab65142 at a 1/500-1/1000 dilution. Left image untreated. Right image treated with immunising peptide.

**Please note:** All products are "FOR RESEARCH USE ONLY. NOT FOR USE IN DIAGNOSTIC PROCEDURES"

#### **Our Abpromise to you: Quality guaranteed and expert technical support**

---

- Replacement or refund for products not performing as stated on the datasheet
- Valid for 12 months from date of delivery
- Response to your inquiry within 24 hours
- We provide support in Chinese, English, French, German, Japanese and Spanish
- Extensive multi-media technical resources to help you
- We investigate all quality concerns to ensure our products perform to the highest standards

If the product does not perform as described on this datasheet, we will offer a refund or replacement. For full details of the Abpromise, please visit <https://www.abcam.co.jp/abpromise> or contact our technical team.

#### **Terms and conditions**

---

- Guarantee only valid for products bought direct from Abcam or one of our authorized distributors