

Anti-Peripherin antibody ab4666

★★★★★ [19 Abreviews](#) [37 References](#) [画像数 3](#)

製品の概要

製品名	Anti-Peripherin antibody
製品の詳細	Rabbit polyclonal to Peripherin
由来種	Rabbit
アプリケーション	適用あり: ICC/IF, WB
種交差性	交差種: Rat, Human
免疫原	Recombinant full length rat peripherin purified from E. coli.
特記事項	<p>The Life Science industry has been in the grips of a reproducibility crisis for a number of years. Abcam is leading the way in addressing this with our range of recombinant monoclonal antibodies and knockout edited cell lines for gold-standard validation. Please check that this product meets your needs before purchasing.</p> <p>If you have any questions, special requirements or concerns, please send us an inquiry and/or contact our Support team ahead of purchase. Recommended alternatives for this product can be found below, along with publications, customer reviews and Q&As</p>

製品の特性

製品の状態	Liquid
保存方法	Shipped at 4°C. Store at +4°C short term (1-2 weeks). Upon delivery aliquot. Store at -20°C long term.
バッファー	Preservative: 0.01% Sodium azide
精製度	Whole antiserum
ポリ/モノ	ポリクローナル
アイソタイプ	IgG

アプリケーション

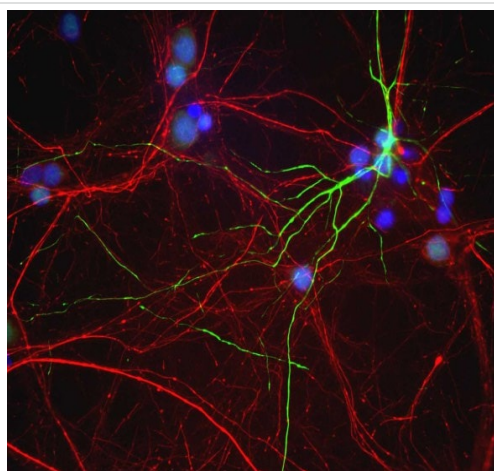
The Abpromise guarantee **Abpromise保証は、** 次のテスト済みアプリケーションにおけるab4666の使用に適用されます
アプリケーションノートには、推奨の開始希釈率がありますが、適切な希釈率につきましてはご検討ください。

アプリケーション	Abreviews	特記事項
ICC/IF	★★★★★ (3)	Use at an assay dependent concentration.
WB		1/1000 - 1/2000. Detects a band of approximately 57 kDa.

ターゲット情報

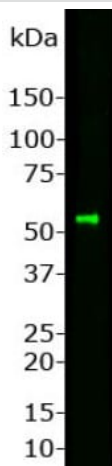
機能	Class-III neuronal intermediate filament protein.
配列類似性	Belongs to the intermediate filament family.

画像



Immunocytochemistry/ Immunofluorescence - Anti-Peripherin antibody (ab4666)

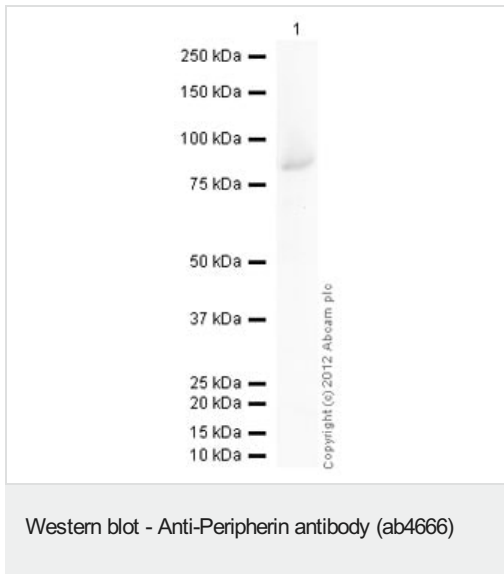
Immunocytochemistry/Immunofluorescence analysis of mixed neuron/glia cultures from newborn rat brain labelling Peripherin (green) with ab4666 and Neurofilament heavy polypeptide (red) with [ab4680](#). A class of large neurons, like the one at the top right of this image, contain peripherin, while the majority of neurons and their processes contain Neurofilament heavy polypeptide and not peripherin. The blue channel reveals the localization of DNA.



Western blot - Anti-Peripherin antibody (ab4666)

Anti-Peripherin antibody (ab4666) at 1/1000 dilution + Rat spinal cord homogenate

Observed band size: 57 kDa



Anti-Peripherin antibody (ab4666) at 1 µg/ml + Recombinant Human Peripherin protein ([ab114335](#)) at 0.01 µg

Secondary

Goat Anti-Rabbit IgG H&L (HRP) preadsorbed ([ab97080](#)) at 1/5000 dilution

Developed using the ECL technique.

Performed under reducing conditions.

Exposure time: 20 seconds

Secondary antibody - goat anti-rabbit HRP preadsorbed ([ab97080](#))

Please note: All products are "FOR RESEARCH USE ONLY. NOT FOR USE IN DIAGNOSTIC PROCEDURES"

Our Abpromise to you: Quality guaranteed and expert technical support

- Replacement or refund for products not performing as stated on the datasheet
- Valid for 12 months from date of delivery
- Response to your inquiry within 24 hours
- We provide support in Chinese, English, French, German, Japanese and Spanish
- Extensive multi-media technical resources to help you
- We investigate all quality concerns to ensure our products perform to the highest standards

If the product does not perform as described on this datasheet, we will offer a refund or replacement. For full details of the Abpromise, please visit <https://www.abcam.co.jp/abpromise> or contact our technical team.

Terms and conditions

- Guarantee only valid for products bought direct from Abcam or one of our authorized distributors