

Anti-Peripherin antibody [8G2] ab4653

★☆☆☆☆ **1 Abreviews** **3 References** 画像数 **2**

製品の概要

製品名	Anti-Peripherin antibody [8G2]
製品の詳細	Mouse monoclonal [8G2] to Peripherin
由来種	Mouse
アプリケーション	適用あり: WB, ICC/IF
種交差性	交差種: Mouse, Rat, Cow, Human
免疫原	Recombinant Rat Peripherin purified from E. coli.
ポジティブ・コントロール	WB: Mouse, rat, cow spinal cord lysate, SH-SY5Y, PC-12 whole cell lysate. ICC: SH-SY5Y, PC-12 cells.
特記事項	<p>The Life Science industry has been in the grips of a reproducibility crisis for a number of years. Abcam is leading the way in addressing this with our range of recombinant monoclonal antibodies and knockout edited cell lines for gold-standard validation. Please check that this product meets your needs before purchasing.</p> <p>If you have any questions, special requirements or concerns, please send us an inquiry and/or contact our Support team ahead of purchase. Recommended alternatives for this product can be found below, along with publications, customer reviews and Q&As</p>

製品の特性

製品の状態	Liquid
保存方法	Shipped at 4°C. Store at +4°C short term (1-2 weeks). Upon delivery aliquot. Store at -20°C or -80°C. Avoid freeze / thaw cycle.
バッファー	Preservative: 0.032% Sodium azide Constituents: 49.98% Glycerol, 49.98% PBS
精製度	Protein A purified
特記事項(精製)	Purified antibody from TCS.
ポリ/モノ	モノクローナル
クローン名	8G2
アイソタイプ	IgG1
軽鎖の種類	kappa

アプリケーション

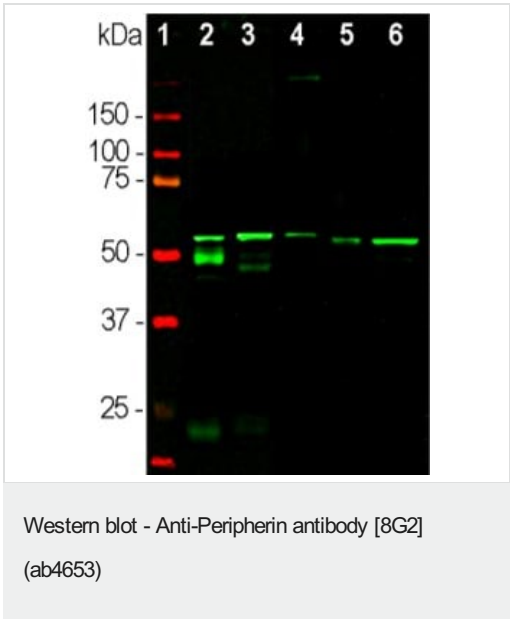
The Abpromise guarantee Abpromise保証は、次のテスト済みアプリケーションにおけるab4653の使用に適用されます
アプリケーションノートには、推奨の開始希釈率がありますが、適切な希釈率につきましてはご確認ください。

アプリケーション	Abreviews	特記事項
WB		1/5000. Detects a band of approximately 57 kDa (predicted molecular weight: 57 kDa).
ICC/IF		1/500.

ターゲット情報

機能	Class-III neuronal intermediate filament protein.
配列類似性	Belongs to the intermediate filament family.

画像



All lanes : Anti-Peripherin antibody [8G2] (ab4653) at 1/500 dilution

Lane 2 : Mouse spinal cord lysate

Lane 3 : Rat spinal cord lysate

Lane 4 : Cow spinal cord lysate

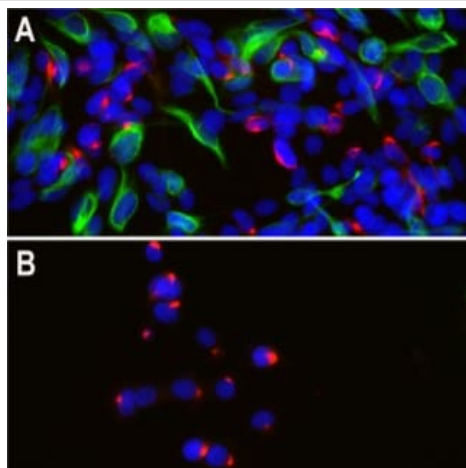
Lane 5 : SH-SY5Y (human bone marrow neuroblastoma cell) whole cell lysate

Lane 6 : PC-12 (rat adrenal gland pheochromocytoma cell) whole cell lysate

Secondary
All lanes : Anti-Mouse IgG

Predicted band size: 57 kDa
Observed band size: 57 kDa
Additional bands at: 25 kDa (possible IgG), 50 kDa (possible IgG)

The band at ~57kDa corresponds to the peripherin protein. Bands at 50 and 25kDa detected in the mouse spinal cord lysate, correspond to the heavy and light chains of mouse IgG.



Immunofluorescent analysis of SH-SY5Y (human bone marrow neuroblastoma cell) cells (A) and PC-12 (rat adrenal gland pheochromocytoma cell) cells (B), stained with ab4653 at 1/500 dilution (Red) and costained with chicken polyclonal anti-vimentin antibody at 1/10,000 dilution (Green). Blue: DAPI staining of nuclear DNA.

Immunocytochemistry/ Immunofluorescence - Anti-
 Peripherin antibody [8G2] (ab4653)

Please note: All products are "FOR RESEARCH USE ONLY. NOT FOR USE IN DIAGNOSTIC PROCEDURES"

Our Abpromise to you: Quality guaranteed and expert technical support

- Replacement or refund for products not performing as stated on the datasheet
- Valid for 12 months from date of delivery
- Response to your inquiry within 24 hours
- We provide support in Chinese, English, French, German, Japanese and Spanish
- Extensive multi-media technical resources to help you
- We investigate all quality concerns to ensure our products perform to the highest standards

If the product does not perform as described on this datasheet, we will offer a refund or replacement. For full details of the Abpromise, please visit <https://www.abcam.co.jp/abpromise> or contact our technical team.

Terms and conditions

- Guarantee only valid for products bought direct from Abcam or one of our authorized distributors