




Anti-PER1 antibody - N-terminal ab136451

★★★★★ [2 Abreviews](#) [8 References](#) [画像数 1](#)

製品の概要

製品名	Anti-PER1 antibody - N-terminal
製品の詳細	Rabbit polyclonal to PER1 - N-terminal
由来種	Rabbit
アプリケーション	適用あり: WB
種交差性	交差種: Human 交差が予測される動物種: Chimpanzee, Rhesus monkey 
免疫原	Recombinant fragment: EGADGGDPRPGEPFC , corresponding to N terminal amino acids 6-21 of Human PER1  Run BLAST with  Run BLAST with
特記事項	<p>The Life Science industry has been in the grips of a reproducibility crisis for a number of years. Abcam is leading the way in addressing this with our range of recombinant monoclonal antibodies and knockout edited cell lines for gold-standard validation. Please check that this product meets your needs before purchasing.</p> <p>If you have any questions, special requirements or concerns, please send us an inquiry and/or contact our Support team ahead of purchase. Recommended alternatives for this product can be found below, along with publications, customer reviews and Q&As</p>

製品の特性

製品の状態	Liquid
保存方法	Store at -20°C or lower. Aliquot to avoid repeated freezing and thawing.
バッファー	Preservative: 0.05% Sodium azide
精製度	Whole antiserum
ポリ/モノ	ポリクローナル

アプリケーション

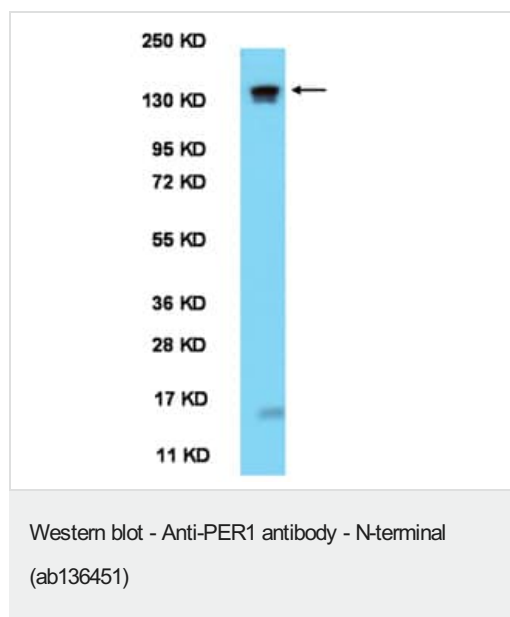
The Abpromise guarantee **Abpromise保証は、** 次のテスト済みアプリケーションにおけるab136451の使用に適用されます
アプリケーションノートには、推奨の開始希釈率がありますが、適切な希釈率につきましてはご検討ください。

アプリケーション	Abreviews	特記事項
WB	★★★★★ (1)	1/500. Predicted molecular weight: 136 kDa.

ターゲット情報

機能	<p>Component of the circadian clock mechanism which is essential for generating circadian rhythms. Negative element in the circadian transcriptional loop. Influences clock function by interacting with other circadian regulatory proteins and transporting them to the nucleus. Negatively regulates CLOCK</p> <p>NPAS2-BMAL1</p> <p>BMAL2-induced transactivation.</p>
組織特異性	<p>Widely expressed. Found in heart, brain, placenta, lung, liver, skeletal muscle, pancreas, kidney, spleen, thymus, prostate, testis, ovary and small intestine. Highest level in skeletal muscle. Low level in kidney.</p>
配列類似性	<p>Contains 1 PAC (PAS-associated C-terminal) domain.</p> <p>Contains 2 PAS (PER-ARNT-SIM) domains.</p>
翻訳後修飾	<p>Phosphorylated on serine residues by CSNK1E. Also can be phosphorylated by the delta isoform. Phosphorylation by CSNK1 retains PER1 in the cytoplasm and leads to its ubiquitination and subsequent degradation. Phosphorylated upon DNA damage, probably by ATM or ATR. Ubiquitinated.</p>
細胞内局在	<p>Nucleus. Cytoplasm. Mainly nuclear. Nucleocytoplasmic shuttling is effected by interaction with other circadian core oscillator proteins and/or by phosphorylation. Retention of PER1 in the cytoplasm occurs through PER1-PER2 heterodimer formation or by interaction with CSNK1E and/or phosphorylation which appears to mask the PER1 nuclear localization signal. Also translocated to the nucleus by CRY1 or CRY2.</p>

画像



Anti-PER1 antibody - N-terminal (ab136451) at 1/500 dilution + Human brain lysate

Predicted band size: 136 kDa

Please note: All products are "FOR RESEARCH USE ONLY. NOT FOR USE IN DIAGNOSTIC PROCEDURES"

Our Abpromise to you: Quality guaranteed and expert technical support

- Replacement or refund for products not performing as stated on the datasheet
- Valid for 12 months from date of delivery
- Response to your inquiry within 24 hours

- We provide support in Chinese, English, French, German, Japanese and Spanish
- Extensive multi-media technical resources to help you
- We investigate all quality concerns to ensure our products perform to the highest standards

If the product does not perform as described on this datasheet, we will offer a refund or replacement. For full details of the Abpromise, please visit <https://www.abcam.co.jp/abpromise> or contact our technical team.

Terms and conditions

- Guarantee only valid for products bought direct from Abcam or one of our authorized distributors