




Anti-Peptide YY/PYY antibody ab22663

★★★★★ [5 Abreviews](#) [19 References](#) [画像数 4](#)

製品の概要

製品名	Anti-Peptide YY/PYY antibody
製品の詳細	Rabbit polyclonal to Peptide YY/PYY
由来種	Rabbit
特異性	Immunostaining may be abolished by preincubation with 1nmol synthetic porcine PYY per mL diluted antibody. NPY and PP (10nmol/mL) have no effect on immunostaining.
アプリケーション	適用あり: IHC-FoFr, IHC-P
種交差性	交差種: Mouse, Rat 交差が予測される動物種: Rabbit, Dog, Human 
免疫原	Full length native protein (purified) corresponding to Pig Peptide YY/PYY aa 1-36. Sequence: YPAKPEAPGE DASPEELSR YASLRHYLNL VTRQRY Database link: P68005 <div>  Run BLAST with  Run BLAST with </div>
特記事項	<p>The Life Science industry has been in the grips of a reproducibility crisis for a number of years. Abcam is leading the way in addressing this with our range of recombinant monoclonal antibodies and knockout edited cell lines for gold-standard validation. Please check that this product meets your needs before purchasing.</p> <p>If you have any questions, special requirements or concerns, please send us an inquiry and/or contact our Support team ahead of purchase. Recommended alternatives for this product can be found below, along with publications, customer reviews and Q&As</p>

製品の特性

製品の状態	Liquid
保存方法	Shipped at 4°C. Upon delivery aliquot and store at -20°C or -80°C. Avoid repeated freeze / thaw cycles.
バッファー	Preservative: 0.07% Sodium azide
精製度	Whole antiserum
ポリ/モノ	ポリクローナル

アプリケーション

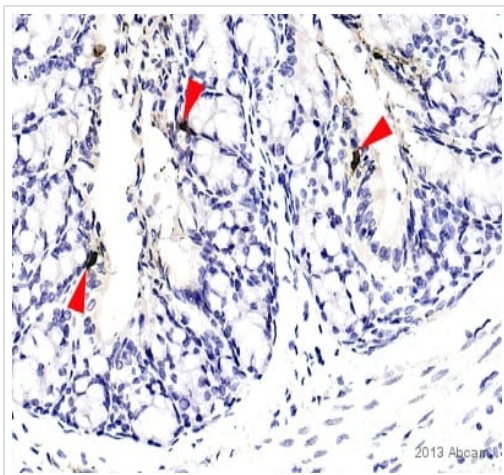
The Abpromise guarantee Abpromise保証は、 次のテスト済みアプリケーションにおけるab22663の使用に適用されます
アプリケーションノートには、推奨の開始希釈率がありますが、適切な希釈率につきましてはご確認ください。

アプリケーション	Abreviews	特記事項
IHC-FoFr		Use at an assay dependent concentration.
IHC-P	★★★★★ (4)	Use at an assay dependent concentration.

ターゲット情報

機能	This gut peptide inhibits exocrine pancreatic secretion, has a vasoconstrictory action and inhibits jejunal and colonic mobility.
配列類似性	Belongs to the NPY family.
細胞内局在	Secreted.

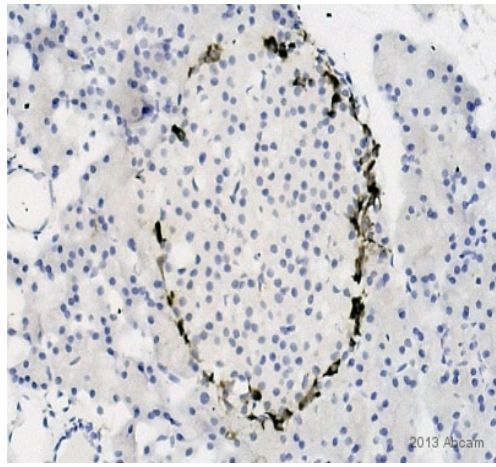
画像



Immunohistochemistry (Formalin/PFA-fixed paraffin-embedded sections) - Anti-Peptide YY/PYY antibody (ab22663)

Image courtesy of Carl Hobbs, Kings College London, U.K.

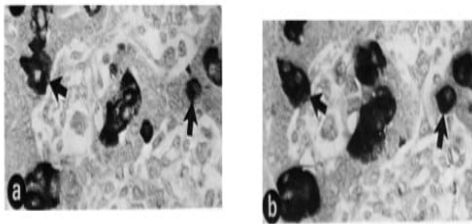
IHC image of Peptide YY/PYY staining in mouse colon formalin fixed paraffin embedded tissue section. Antigen retrieval was heat mediated with citrate and sections were blocked in 1% B.S.A for 10 minutes at 21°C. Sample was incubated in primary antibody at 1/9000 for 2 hours and a biotin conjugated goat-anti-rabbit secondary was used at 1/250.



Immunohistochemistry (Formalin/PFA-fixed paraffin-embedded sections) - Anti-Peptide YY/PYY antibody (ab22663)

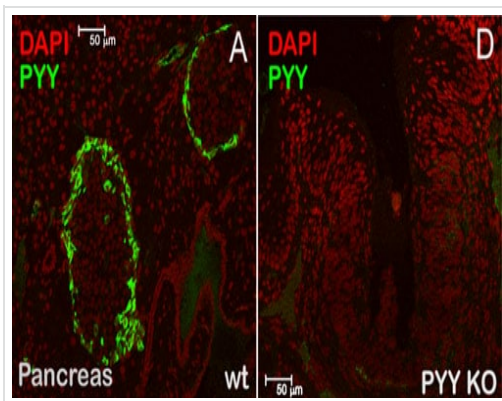
Image courtesy of Carl Hobbs, Kings College London, U.K.

IHC image of Peptide YY/PYY staining in rat pancreas formalin fixed paraffin embedded tissue section. Antigen retrieval was heat mediated with citrate and sections were blocked in 1% B.S.A for 10 minutes at 21°C. Sample was incubated in primary antibody at 1/9000 for 2 hours and a biotin conjugated goat-anti-rabbit secondary was used at 1/250.



Immunohistochemistry (PFA perfusion fixed frozen sections) - Anti-Peptide YY/PYY antibody (ab22663)

Adjacent de-waxed sections of Bouin-fixed fetal (14 day) rat pancreas stained with rabbit polyclonal antisera to PYY (ab22663; panel a) and glucagon ([ab18461](#); panel b). Arrows indicate identical cell profiles. From Ali-Rachedi et al, 1984.



Immunohistochemistry (Formalin/PFA-fixed paraffin-embedded sections) - Anti-Peptide YY/PYY antibody (ab22663)

Image from Acosta A et al., PLoS One. 2011;6(10):e26137. Epub 2011 Oct 10. Fig 2.; doi:10.1371/journal.pone.0026137; October 10, 2011, PLoS ONE 6(10): e26137.

ab22663 staining Peptide YY/PYY (green) in murine pancreas tissue by Immunohistochemistry (Formalin/PFA-fixed paraffin-embedded sections).

Tissue (left, WT; right, Peptide YY/PYY KO) was fixed with paraformaldehyde and blocked with 3% H₂O₂ in methanol, followed by antigen retrieval with trypsin. Samples were incubated with primary antibody (1/2000 in TNT) overnight. An AlexaFluor®488-conjugated donkey anti-rabbit IgG (1/1000 in TNT) was used as the secondary antibody. Nuclei were stained with DAPI (red).

Please note: All products are "FOR RESEARCH USE ONLY. NOT FOR USE IN DIAGNOSTIC PROCEDURES"

Our Abpromise to you: Quality guaranteed and expert technical support

- Replacement or refund for products not performing as stated on the datasheet
- Valid for 12 months from date of delivery
- Response to your inquiry within 24 hours
- We provide support in Chinese, English, French, German, Japanese and Spanish
- Extensive multi-media technical resources to help you
- We investigate all quality concerns to ensure our products perform to the highest standards

If the product does not perform as described on this datasheet, we will offer a refund or replacement. For full details of the Abpromise, please visit <https://www.abcam.co.jp/abpromise> or contact our technical team.

Terms and conditions

- Guarantee only valid for products bought direct from Abcam or one of our authorized distributors