




Anti-Pellino 1 antibody ab13812

★★★★★ [5 Abreviews](#) [4 References](#) [画像数 1](#)

製品の概要

製品名	Anti-Pellino 1 antibody
製品の詳細	Rabbit polyclonal to Pellino 1
由来種	Rabbit
アプリケーション	適用あり: WB
種交差性	交差種: Mouse, Human 交差が予測される動物種: Rat, Xenopus laevis 
免疫原	Synthetic peptide: SQSNSDTQSV QSTIS conjugated to KLH, corresponding to amino acids 121-135 of Human Pellino 1 <div>  Run BLAST with  Run BLAST with </div>
特記事項	<p>The Life Science industry has been in the grips of a reproducibility crisis for a number of years. Abcam is leading the way in addressing this with our range of recombinant monoclonal antibodies and knockout edited cell lines for gold-standard validation. Please check that this product meets your needs before purchasing.</p> <p>If you have any questions, special requirements or concerns, please send us an inquiry and/or contact our Support team ahead of purchase. Recommended alternatives for this product can be found below, along with publications, customer reviews and Q&As</p>

製品の特性

製品の状態	Liquid
保存方法	Shipped at 4°C. Upon delivery aliquot and store at -20°C. Avoid freeze / thaw cycles.
バッファー	Preservative: 0.05% Sodium azide Constituents: PBS, 0.05% BSA
精製度	Protein G purified
特記事項(精製)	This antibody is affinity purified.
ポリ/モノ	ポリクローナル
アイソタイプ	IgG

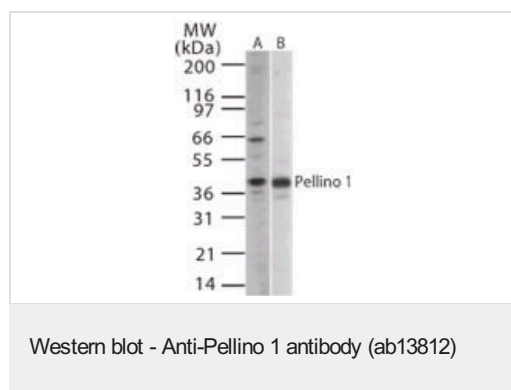
The Abpromise guarantee Abpromise保証は、 次のテスト済みアプリケーションにおけるab13812の使用に適用されます
アプリケーションノートには、推奨の開始希釈率がありますが、適切な希釈率につきましてはご検討ください。

アプリケーション	Abreviews	特記事項
WB	★★★★★ (2)	1/500 - 1/1000. Predicted molecular weight: 46 kDa.

ターゲット情報

機能	Scaffold protein involved in the IL-1 signaling pathway via its interaction with the complex containing IRAK kinases and TRAF6. Required for NF-kappa-B activation and IL-8 gene expression in response to IL-1.
配列類似性	Belongs to the pellino family.

画像



All lanes : Anti-Pellino 1 antibody (ab13812) at 1/1000 dilution

Lane 1 : Lysates prepared from human Ramos cell line

Lane 2 : Lysates prepared from mouse Raw cell line

Predicted band size: 46 kDa

Western blot analysis of Pellino1 in human Ramos cell lysate (A) and mouse Raw cell lysate (B) using ab13812 at 1/1000

Please note: All products are "FOR RESEARCH USE ONLY. NOT FOR USE IN DIAGNOSTIC PROCEDURES"

Our Abpromise to you: Quality guaranteed and expert technical support

- Replacement or refund for products not performing as stated on the datasheet
- Valid for 12 months from date of delivery
- Response to your inquiry within 24 hours
- We provide support in Chinese, English, French, German, Japanese and Spanish
- Extensive multi-media technical resources to help you
- We investigate all quality concerns to ensure our products perform to the highest standards

If the product does not perform as described on this datasheet, we will offer a refund or replacement. For full details of the Abpromise, please visit <https://www.abcam.co.jp/abpromise> or contact our technical team.

Terms and conditions

- Guarantee only valid for products bought direct from Abcam or one of our authorized distributors