

### Anti-PEDF antibody ab14993

★★★★★ [1 Abreviews](#) [9 References](#) [画像数 2](#)

#### 製品の概要

製品名	Anti-PEDF antibody
製品の詳細	Rabbit polyclonal to PEDF
由来種	Rabbit
特異性	Recognizes PEDF at 50kDa. Additional bands were detected at 66 and 76kDa, which were competed away by immunogen. These bands may be post translationally modified forms.
アプリケーション	<b>適用あり:</b> WB
種交差性	<b>交差種:</b> Human
免疫原	Recombinant full length protein (His-tag) corresponding to Human PEDF. Expressed in baby hamster kidney cells. Database link: <a href="#">P36955</a>
ポジティブ・コントロール	WB: RIPA lysates from Y79 cells.
特記事項	For maximum recovery of product, centrifuge the original vial after thawing and prior to removing the cap. Further dilutions can be made in assay buffer.  The Life Science industry has been in the grips of a reproducibility crisis for a number of years. Abcam is leading the way in addressing this with our range of recombinant monoclonal antibodies and knockout edited cell lines for gold-standard validation. Please check that this product meets your needs before purchasing.  If you have any questions, special requirements or concerns, please send us an inquiry and/or contact our Support team ahead of purchase. Recommended alternatives for this product can be found below, along with publications, customer reviews and Q&As

#### 製品の特性

製品の状態	Liquid
保存方法	Shipped at 4°C. Add glycerol to a final volume of 50% for extra stability and aliquot. Store at -20°C. Avoid freeze / thaw cycle.
バッファー	pH: 7.40 Preservative: 0.05% Sodium azide Constituents: 0.184% Tris glycine, 30% Glycerol, 0.87% Sodium chloride
精製度	Protein A purified
ポリ/モノ	ポリクローナル

## アプリケーション

### The Abpromise guarantee

**Abpromise保証は、次のテスト済みアプリケーションにおけるab14993の使用に適用されます**

アプリケーションノートには、推奨の開始希釈率がありますが、適切な希釈率につきましてはご検討ください。

アプリケーション	Abreviews	特記事項
WB	★★★★★ (1)	Use a concentration of 0.5 - 2 µg/ml. Detects a band of approximately 50 kDa (predicted molecular weight: 50 kDa).

## ターゲット情報

機能	Neurotrophic protein; induces extensive neuronal differentiation in retinoblastoma cells. Potent inhibitor of angiogenesis. As it does not undergo the S (stressed) to R (relaxed) conformational transition characteristic of active serpins, it exhibits no serine protease inhibitory activity.
組織特異性	Retinal pigment epithelial cells and blood plasma.
配列類似性	Belongs to the serpin family.
発生段階	Expressed in quiescent cells.
ドメイン	The N-terminal (AA 44-121) exhibits neurite outgrowth-inducing activity. The C-terminal exposed loop (AA 382-418) is essential for serpin activity.
翻訳後修飾	The N-terminus is blocked. Extracellular phosphorylation enhances antiangiogenic activity. N- and O-glycosylated. O-glycosylated with a core 1 or possibly core 8 glycan.
細胞内局在	Secreted. Melanosome. Enriched in stage I melanosomes.

## 画像



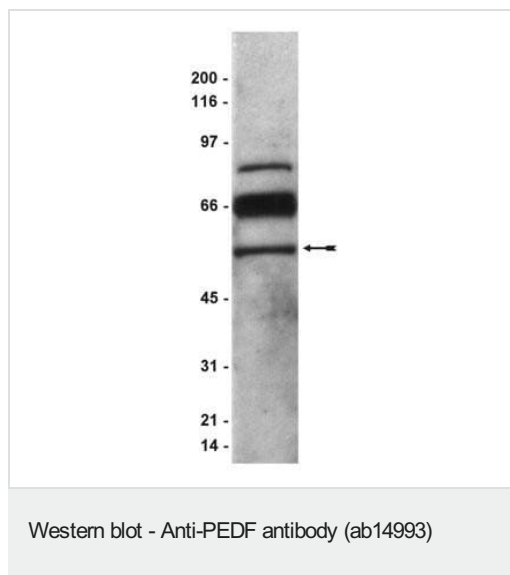
**Lanes 1-4:** Cartilage lysates from 4 osteoarthritic knee replacement donors (100 mg (wet weight) powdered cartilage/ 1 ml RIPA buffer, extracted for 24 hrs at 4°C)

**Lane C:** Positive control (overexpressing cell line)

Anticipated band at approx 50kDa detected. Specificity of antibody allowed relatively long exposure and quite high concentrations of primary and secondary antibodies to be used with negligible background. Good results were also obtained with unreduced samples.

The additional approx 250kDa band is likely to be due to PEDF crosslinked or bound to high molecular weight matrix proteins (collagen, aggrecan) which are present in cartilage lysates.

Reduction using beta mercaptoethanol reduced some, but not all high MW staining and increased the intensity of the 50kDa band.



Anti-PEDF antibody (ab14993) at 1 µg/ml + Y79 (Human retinoblastoma cell line) cell lysate in RIPA buffer at 40 µg

**Secondary**

IgG (HRP) goat anti-rabbit

**Predicted band size:** 50 kDa

Chemiluminescence detection system.

**Please note:** All products are "FOR RESEARCH USE ONLY. NOT FOR USE IN DIAGNOSTIC PROCEDURES"

**Our Abpromise to you: Quality guaranteed and expert technical support**

---

- Replacement or refund for products not performing as stated on the datasheet
- Valid for 12 months from date of delivery
- Response to your inquiry within 24 hours
- We provide support in Chinese, English, French, German, Japanese and Spanish
- Extensive multi-media technical resources to help you
- We investigate all quality concerns to ensure our products perform to the highest standards

If the product does not perform as described on this datasheet, we will offer a refund or replacement. For full details of the Abpromise, please visit <https://www.abcam.co.jp/abpromise> or contact our technical team.

**Terms and conditions**

---

- Guarantee only valid for products bought direct from Abcam or one of our authorized distributors