

PE/Cy7® Anti-Ly-6A/E (Sca-1) antibody [D7] ab93537

画像数 1

製品の概要

製品名	PE/Cy7® Anti-Ly-6A/E (Sca-1) antibody [D7]
製品の詳細	PE/Cy7® Rat monoclonal [D7] to Ly-6A/E (Sca-1)
由来種	Rat
標識	PE/Cy7®. Ex: 496nm, Em: 774nm
特異性	ab93537 reacts with both Ly6E.1 and Ly6A.2 molecules expressed by mouse hematopoietic stem cells, myeloid population and peripheral T and B cells.
アプリケーション	適用あり: Flow Cyt
種交差性	交差種: Mouse
免疫原	Tissue, cells or virus corresponding to Mouse Sca1/ Ly6A/E. IL2 dependent T cell line CTL-L (Mouse).
ポジティブ・コントロール	C57Bl/6 splenocytes.
特記事項	<p>This Cy7 tandem dye is sensitive to photo-induced oxidation. Protect this reagent from light during storage, handling & experimental procedures.</p> <p>The Life Science industry has been in the grips of a reproducibility crisis for a number of years. Abcam is leading the way in addressing this with our range of recombinant monoclonal antibodies and knockout edited cell lines for gold-standard validation. Please check that this product meets your needs before purchasing.</p> <p>If you have any questions, special requirements or concerns, please send us an inquiry and/or contact our Support team ahead of purchase. Recommended alternatives for this product can be found below, along with publications, customer reviews and Q&As</p>

製品の特性

製品の状態	Liquid
保存方法	Shipped at 4°C. Store at +4°C.
バッファー	pH: 7.20 Preservative: 0.09% Sodium azide Constituent: PBS
精製度	Protein stabiliser Protein G purified

ポリモノ	モノクローナル
クローン名	D7
アイソタイプ	IgG2a
軽鎖の種類	kappa

アプリケーション

The Abpromise guarantee **Abpromise保証は、次のテスト済みアプリケーションにおけるab93537の使用に適用されず**
 アプリケーションノートには、推奨の開始希釈率がありますが、適切な希釈率につきましてはご検討ください。

アプリケーション	Abreviews	特記事項
Flow Cyt		

追加情報

Flow Cyt: Use at a concentration of 0.06 µg/test. A test is defined as the amount (µg) of antibody that will stain a cell sample in a final volume of 100 µL. Cell number should be determined empirically but can range from 10⁵ to 10⁸ cells/test.

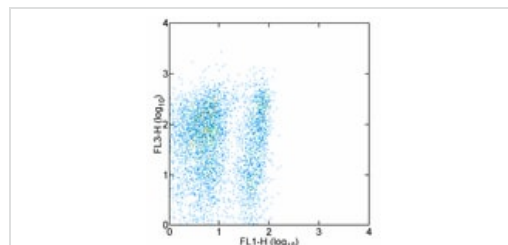
Not yet tested in other applications.

Optimal dilutions/concentrations should be determined by the end user.

ターゲット情報

機能	T-cell activation.
組織特異性	Widely expressed.
配列類似性	Contains 1 UPAR/Ly6 domain.
翻訳後修飾	O-glycosylated. Not N-glycosylated. Not phosphorylated.
細胞内局在	Cell membrane.

画像



ab93537 at 0.06µg dilution staining Ly6A/E (Sca1) in C57Bl/6 splenocytes by Flow Cytometry. Cells in the lymphocyte gate were used for analysis.

Flow Cytometry - PE/Cy7® Anti-Sca1 / Ly6A/E antibody [D7] (ab93537)

Please note: All products are "FOR RESEARCH USE ONLY. NOT FOR USE IN DIAGNOSTIC PROCEDURES"

Our Abpromise to you: Quality guaranteed and expert technical support

- Replacement or refund for products not performing as stated on the datasheet
- Valid for 12 months from date of delivery
- Response to your inquiry within 24 hours

- We provide support in Chinese, English, French, German, Japanese and Spanish
- Extensive multi-media technical resources to help you
- We investigate all quality concerns to ensure our products perform to the highest standards

If the product does not perform as described on this datasheet, we will offer a refund or replacement. For full details of the Abpromise, please visit <https://www.abcam.co.jp/abpromise> or contact our technical team.

Terms and conditions

- Guarantee only valid for products bought direct from Abcam or one of our authorized distributors