

PE/Cy7® Anti-CD23 antibody [2G8] ab59456

2 References [画像数 1](#)

製品の概要

製品名	PE/Cy7® Anti-CD23 antibody [2G8]
製品の詳細	PE/Cy7® Rat monoclonal [2G8] to CD23
由来種	Rat
標識	PE/Cy7®. Ex: 496nm, Em: 774nm
特異性	This antibody reacts with the CD23 low affinity IgE Fc receptor.
アプリケーション	適用あり: Flow Cyt
種交差性	交差種: Mouse
免疫原	Tissue, cells or virus corresponding to CD23. FcεR isolated from B cell lymphoma cell line M12.4.5
特記事項	<p>This product or portions thereof is manufactured under license from Carnegie Mellon University under U.S. Patent Number 5, 268, 486 and related patents. Cy® and CyDye® are trademarks of Cytiva.</p> <p>The Life Science industry has been in the grips of a reproducibility crisis for a number of years. Abcam is leading the way in addressing this with our range of recombinant monoclonal antibodies and knockout edited cell lines for gold-standard validation. Please check that this product meets your needs before purchasing.</p> <p>If you have any questions, special requirements or concerns, please send us an inquiry and/or contact our Support team ahead of purchase. Recommended alternatives for this product can be found below, along with publications, customer reviews and Q&As</p>

製品の特性

製品の状態	Liquid
保存方法	Shipped at 4°C. Store at +4°C. Store In the Dark.
バッファー	<p>pH: 7.1</p> <p>Preservative: 0.09% Sodium azide</p> <p>Constituents: PBS, 16% Sucrose</p> <p>Also contains stabilising agent.</p>
精製度	Affinity purified

ポリ/モノ	モノクローナル
クローン名	2G8
アイソタイプ	IgG2a
軽鎖の種類	kappa

アプリケーション

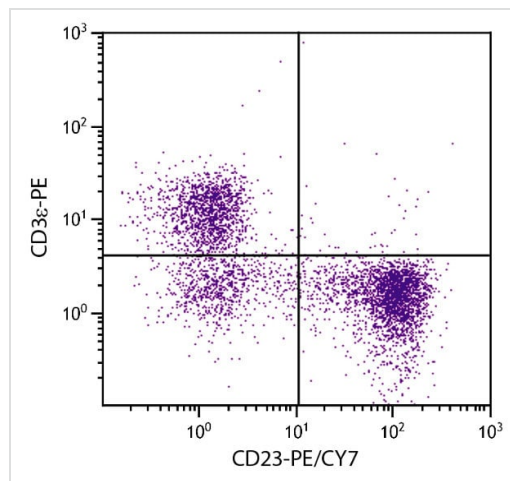
The Abpromise guarantee Abpromise保証は、次のテスト済みアプリケーションにおけるab59456の使用に適用されます
 アプリケーションノートには、推奨の開始希釈率がありますが、適切な希釈率につきましてはご確認ください。

アプリケーション	Abreviews	特記事項
Flow Cyt		Use at an assay dependent concentration. ab154460 - Rat monoclonal IgG2a, is suitable for use as an isotype control with this antibody.

ターゲット情報

機能	This receptor has essential roles in the regulation of IgE production and in the differentiation of B-cells (it is a B-cell-specific antigen).
配列類似性	Contains 1 C-type lectin domain.
翻訳後修飾	N- and O-glycosylated.
細胞内局在	Cell membrane. Secreted. Also exists as a soluble excreted form.

画像



Flow cytometry analysis of BALB/c mouse splenocytes labeling CD23 with ab59456 at 0.1 $\mu\text{g}/10^6$ cells and CD3 epsilon with Rat Anti-Mouse CD3 epsilon-PE.

Flow Cytometry - PE/Cy7® Anti-CD23 antibody
 [2G8] (ab59456)

Please note: All products are "FOR RESEARCH USE ONLY. NOT FOR USE IN DIAGNOSTIC PROCEDURES"

Our Abpromise to you: Quality guaranteed and expert technical support

- Replacement or refund for products not performing as stated on the datasheet
- Valid for 12 months from date of delivery
- Response to your inquiry within 24 hours

- We provide support in Chinese, English, French, German, Japanese and Spanish
- Extensive multi-media technical resources to help you
- We investigate all quality concerns to ensure our products perform to the highest standards

If the product does not perform as described on this datasheet, we will offer a refund or replacement. For full details of the Abpromise, please visit <https://www.abcam.co.jp/abpromise> or contact our technical team.

Terms and conditions

- Guarantee only valid for products bought direct from Abcam or one of our authorized distributors