

PE/Cy5® Anti-CD63 antibody [MEM-259] ab234251

4 References [画像数 1](#)

製品の概要

製品名	PE/Cy5® Anti-CD63 antibody [MEM-259]
製品の詳細	PE/Cy5® Mouse monoclonal [MEM-259] to CD63
由来種	Mouse
標識	PE/Cy5®. Ex: 496nm, Em: 670nm
アプリケーション	適用あり: Flow Cyt
種交差性	交差種: Human
免疫原	Tissue, cells or virus corresponding to Human CD63. (HPB-ALL T cell line).
ポジティブ・コントロール	Flow Cyt: IgE-activated human peripheral blood.
特記事項	<p>This product or portions thereof is manufactured under license from Carnegie Mellon University under U.S. Patent Number 5, 268, 486 and related patents. Cy® and CyDye® are trademarks of Cytiva.</p> <p>The Life Science industry has been in the grips of a reproducibility crisis for a number of years. Abcam is leading the way in addressing this with our range of recombinant monoclonal antibodies and knockout edited cell lines for gold-standard validation. Please check that this product meets your needs before purchasing.</p> <p>If you have any questions, special requirements or concerns, please send us an inquiry and/or contact our Support team ahead of purchase. Recommended alternatives for this product can be found below, along with publications, customer reviews and Q&As</p>

製品の特性

製品の状態	Liquid
保存方法	Shipped at 4°C. Store at +4°C. Do Not Freeze. Store In the Dark.
バッファー	<p>pH: 7.4</p> <p>Preservative: 0.0975% Sodium azide</p> <p>Constituent: PBS</p>
精製度	Size exclusion
特記事項 (精製)	Purified antibody is conjugated with tandem dye PE/Cy5® under optimum conditions. The conjugate is purified by size-exclusion chromatography and adjusted for direct use. No reconstitution is necessary.

ポリ/モノ	モノクローナル
クローン名	MEM-259
アイソタイプ	IgG1

アプリケーション

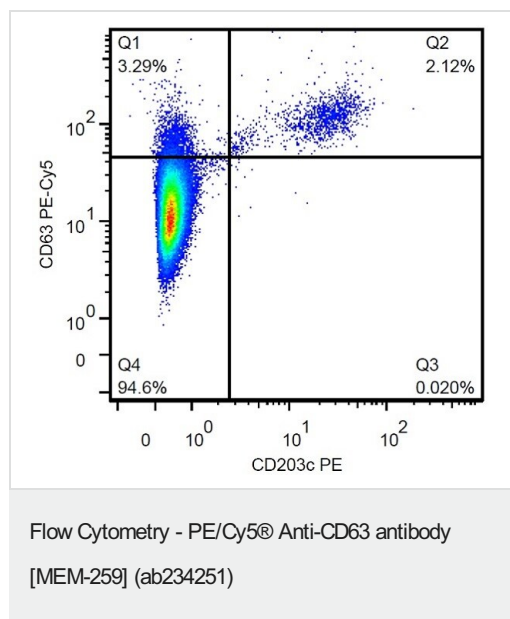
The Abpromise guarantee **Abpromise保証は、**次のテスト済みアプリケーションにおけるab234251の使用に適用されます
アプリケーションノートには、推奨の開始希釈率がありますが、適切な希釈率につきましてはご検討ください。

アプリケーション	Abreviews	特記事項
Flow Cyt		Use 4µl for 10 ⁶ cells. (or 100 µl of whole blood).

ターゲット情報

機能	This antigen is associated with early stages of melanoma tumor progression. May play a role in growth regulation.
組織特異性	Dysplastic nevi, radial growth phase primary melanomas, hematopoietic cells, tissue macrophages.
配列類似性	Belongs to the tetraspanin (TM4SF) family.
細胞内局在	Cell membrane. Lysosome membrane. Late endosome membrane. Also found in Weibel-Palade bodies of endothelial cells. Located in platelet dense granules.

画像



Flow cytometric analysis of IgE-activated human peripheral blood labeling CD63 with ab234251 at 4 µl/10⁶ cells.

Please note: All products are "FOR RESEARCH USE ONLY. NOT FOR USE IN DIAGNOSTIC PROCEDURES"

Our Abpromise to you: Quality guaranteed and expert technical support

- Replacement or refund for products not performing as stated on the datasheet
- Valid for 12 months from date of delivery
- Response to your inquiry within 24 hours

- We provide support in Chinese, English, French, German, Japanese and Spanish
- Extensive multi-media technical resources to help you
- We investigate all quality concerns to ensure our products perform to the highest standards

If the product does not perform as described on this datasheet, we will offer a refund or replacement. For full details of the Abpromise, please visit <https://www.abcam.co.jp/abpromise> or contact our technical team.

Terms and conditions

- Guarantee only valid for products bought direct from Abcam or one of our authorized distributors