

PE/Cy5® Anti-CD38 antibody [90] ab25043

画像数 1

製品の概要

製品名	PE/Cy5® Anti-CD38 antibody [90]
製品の詳細	PE/Cy5® Rat monoclonal [90] to CD38
由来種	Rat
標識	PE/Cy5®. Ex: 496nm, Em: 670nm
特異性	ab25043 recognises CD38, an immunoregulatory ectoenzyme.
アプリケーション	適用あり: Flow Cyt
種交差性	交差種: Mouse
免疫原	Tissue, cells or virus corresponding to CD38. Mouse bone marrow pre-B cells
特記事項	<p>This product or portions thereof is manufactured under license from Carnegie Mellon University under U.S. Patent Number 5, 268, 486 and related patents. Cy® and CyDye® are trademarks of Cytiva.</p> <p>The Life Science industry has been in the grips of a reproducibility crisis for a number of years. Abcam is leading the way in addressing this with our range of recombinant monoclonal antibodies and knockout edited cell lines for gold-standard validation. Please check that this product meets your needs before purchasing.</p> <p>If you have any questions, special requirements or concerns, please send us an inquiry and/or contact our Support team ahead of purchase. Recommended alternatives for this product can be found below, along with publications, customer reviews and Q&As</p>

製品の特性

製品の状態	Liquid
保存方法	Shipped at 4°C. Store at +4°C. Store In the Dark.
バッファー	<p>pH: 7.1</p> <p>Preservative: 0.09% Sodium azide</p> <p>Constituents: PBS, 0.2% Gelatin, 16% Sucrose</p> <p>Stabilising agent.</p>
精製度	Affinity purified
ポリ/モノ	モノクローナル

クローン名	90
アイソタイプ	IgG2a
軽鎖の種類	kappa

アプリケーション

The Abpromise guarantee **Abpromise保証は、**次のテスト済みアプリケーションにおけるab25043の使用に適用されます
アプリケーションノートには、推奨の開始希釈率がありますが、適切な希釈率につきましてはご検討ください。

アプリケーション	Abreviews	特記事項
Flow Cyt		

追加情報

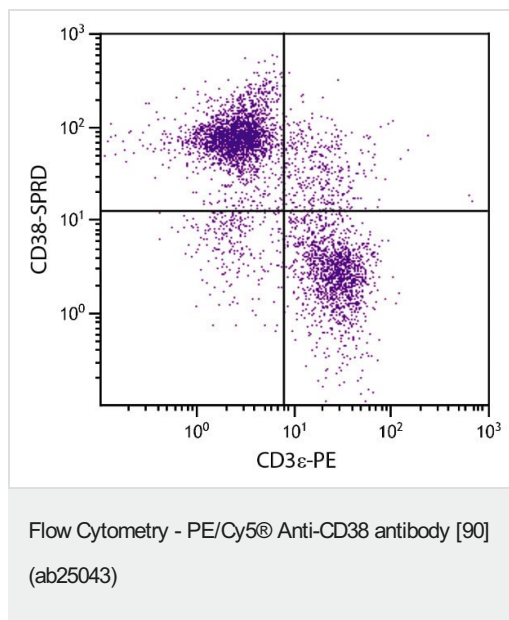
Cellular activation[Induction of B lymphocyte proliferation]: Use at an assay dependent dilution.
Flow Cyt: Use 0.2µg for 10⁶ cells.
IHC-Fr: Use at an assay dependent dilution.
IP: Use at an assay dependent dilution.

Not yet tested in other applications.
Optimal dilutions/concentrations should be determined by the end user.

ターゲット情報

機能	Synthesizes cyclic ADP-ribose, a second messenger for glucose-induced insulin secretion. Also has cADPr hydrolase activity. Also moonlights as a receptor in cells of the immune system.
組織特異性	Expressed at high levels in pancreas, liver, kidney, brain, testis, ovary, placenta, malignant lymphoma and neuroblastoma.
配列類似性	Belongs to the ADP-ribosyl cyclase family.
発生段階	Preferentially expressed at both early and late stages of the B and T-cell maturation. It is also detected on erythroid and myeloid progenitors in bone marrow, where the level of surface expression was shown to decrease during differentiation of blast-forming unit E to colony-forming unit E.
細胞内局在	Membrane.
製品の状態	There are 2 isoforms produced by alternative splicing.

画像



Flow Cytometry analysis of BALB/c mouse splenocytes stained with Anti-CD38 antibody [90] (PE/Cy5) (ab25043) ($0.1 \mu\text{g}/10^6\text{cells}$) and Anti-CD3 epsilon antibody [C363.29B] (Phycoerythrin).

Please note: All products are "FOR RESEARCH USE ONLY. NOT FOR USE IN DIAGNOSTIC PROCEDURES"

Our Abpromise to you: Quality guaranteed and expert technical support

- Replacement or refund for products not performing as stated on the datasheet
- Valid for 12 months from date of delivery
- Response to your inquiry within 24 hours
- We provide support in Chinese, English, French, German, Japanese and Spanish
- Extensive multi-media technical resources to help you
- We investigate all quality concerns to ensure our products perform to the highest standards

If the product does not perform as described on this datasheet, we will offer a refund or replacement. For full details of the Abpromise, please visit <https://www.abcam.co.jp/abpromise> or contact our technical team.

Terms and conditions

- Guarantee only valid for products bought direct from Abcam or one of our authorized distributors