

PE/Cy5® Anti-CD3 epsilon antibody [C363.29B] ab25531

1 References [画像数 1](#)

製品の概要

製品名	PE/Cy5® Anti-CD3 epsilon antibody [C363.29B]
製品の詳細	PE/Cy5® Rat monoclonal [C363.29B] to CD3 epsilon
由来種	Rat
標識	PE/Cy5®. Ex: 496nm, Em: 670nm
アプリケーション	適用あり: Flow Cyt
種交差性	交差種: Mouse
免疫原	Full length protein corresponding to Mouse CD3 epsilon. " IL-4 producing Th2 cell lines including D10"
エピトープ	This antibody recognises an epitope on the 25kDa epsilon chain of the CD3/TCR complex.
特記事項	<p>In the presence of Fc receptor-bearing accessory cells, this antibody can activate primed and naïve T cell in vitro. When immobilized it can also activate both normal T lymphocytes and cloned T cell lines provided the appropriate accessory signals are present. The antibody is cytolytic, is easily used for cell surface staining. This antibody has shown to be useful in studies of in vitro depletion of CD3+ cells, and in vitro activation of T cells (accessory cells must be provided).</p> <p>This product or portions thereof is manufactured under license from Carnegie Mellon University under U.S. Patent Number 5, 268, 486 and related patents. Cy® and CyDye® are trademarks of Cytiva.</p> <p>The Life Science industry has been in the grips of a reproducibility crisis for a number of years. Abcam is leading the way in addressing this with our range of recombinant monoclonal antibodies and knockout edited cell lines for gold-standard validation. Please check that this product meets your needs before purchasing.</p> <p>If you have any questions, special requirements or concerns, please send us an inquiry and/or contact our Support team ahead of purchase. Recommended alternatives for this product can be found below, along with publications, customer reviews and Q&As</p>

製品の特性

製品の状態	Liquid
保存方法	Shipped at 4°C. Store at +4°C. Store In the Dark.
バッファー	pH: 7.1 Preservative: 0.09% Sodium azide

Constituents: PBS, 0.2% Gelatin, 16% Sucrose

Also contains a stabilizing agent.

精製度	IgG fraction
一次抗体 備考	In the presence of Fc receptor-bearing accessory cells, this antibody can activate primed and naïve T cell in vitro. When immobilized it can also activate both normal T lymphocytes and cloned T cell lines provided the appropriate accessory signals are present. The antibody is cytolytic, is easily used for cell surface staining and is a good immunoprecipitating antibody. This antibody has shown to be useful in studies of in vitro depletion of CD3+ cells, and in vitro activation of T cells (accessory cells must be provided).
ポリ/モノ	モノクローナル
クローン名	C363.29B
アイソタイプ	IgG2c
軽鎖の種類	kappa

アプリケーション

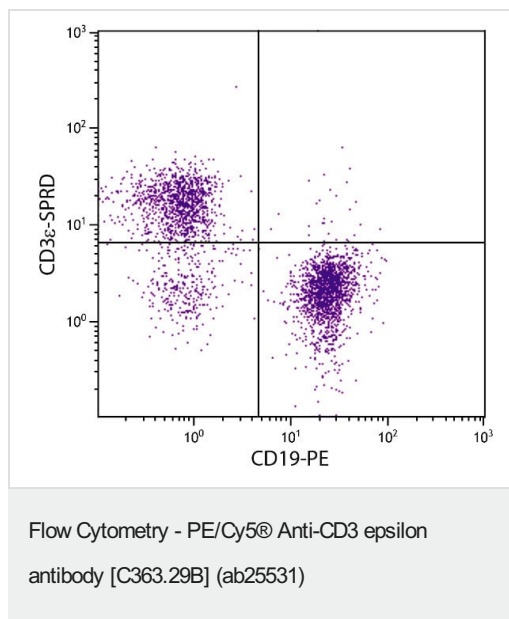
The Abpromise guarantee **Abpromise保証は、**次のテスト済みアプリケーションにおけるab25531の使用に適用されます
アプリケーションノートには、推奨の開始希釈率がありますが、適切な希釈率につきましてはご検討ください。

アプリケーション	Abreviews	特記事項
Flow Cyt		Use 1µg for 10 ⁶ cells.

ターゲット情報

機能	The CD3 complex mediates signal transduction.
配列類似性	Contains 1 Ig-like (immunoglobulin-like) domain. Contains 1 ITAM domain.
細胞内局在	Membrane.

画像



Flow Cytometry analysis of BALB/c mouse splenocytes stained with Anti-CD3 epsilon antibody [C363.29B] (PE/Cy5) ab25531 (1 µg/10⁶cells) and Rat Anti-Mouse CD19-PE.

Please note: All products are "FOR RESEARCH USE ONLY. NOT FOR USE IN DIAGNOSTIC PROCEDURES"

Our Abpromise to you: Quality guaranteed and expert technical support

- Replacement or refund for products not performing as stated on the datasheet
- Valid for 12 months from date of delivery
- Response to your inquiry within 24 hours
- We provide support in Chinese, English, French, German, Japanese and Spanish
- Extensive multi-media technical resources to help you
- We investigate all quality concerns to ensure our products perform to the highest standards

If the product does not perform as described on this datasheet, we will offer a refund or replacement. For full details of the Abpromise, please visit <https://www.abcam.co.jp/abpromise> or contact our technical team.

Terms and conditions

- Guarantee only valid for products bought direct from Abcam or one of our authorized distributors