


Anti-Pea3 antibody ab98068

画像数 1

製品の概要

製品名	Anti-Pea3 antibody
製品の詳細	Rabbit polyclonal to Pea3
由来種	Rabbit
アプリケーション	適用あり: WB
種交差性	交差種: Human 交差が予測される動物種: Mouse, Rat, Horse, Chimpanzee, Macaque monkey, Gorilla 
免疫原	Synthetic peptide corresponding to Human Pea3 aa 100-200 conjugated to keyhole limpet haemocyanin. (Peptide available as ab140322)
ポジティブ・コントロール	This antibody gave a positive signal in the following whole cell lysates: MCF7; K562; Jurkat; HepG2.
特記事項	<p>The Life Science industry has been in the grips of a reproducibility crisis for a number of years. Abcam is leading the way in addressing this with our range of recombinant monoclonal antibodies and knockout edited cell lines for gold-standard validation. Please check that this product meets your needs before purchasing.</p> <p>If you have any questions, special requirements or concerns, please send us an inquiry and/or contact our Support team ahead of purchase. Recommended alternatives for this product can be found below, along with publications, customer reviews and Q&As</p>

製品の特性

製品の状態	Liquid
保存方法	Shipped at 4°C. Store at +4°C short term (1-2 weeks). Upon delivery aliquot. Store at -20°C or -80°C. Avoid freeze / thaw cycle.
バッファー	pH: 7.40 Preservative: 0.02% Sodium azide Constituents: 1% BSA, PBS
	Batches of this product that have a concentration < 1mg/ml may have BSA added as a stabilising agent. If you would like information about the formulation of a specific lot, please contact our scientific support team who will be happy to help.

精製度	Immunogen affinity purified
ポリ/モノ	ポリクローナル
アイソタイプ	IgG

アプリケーション

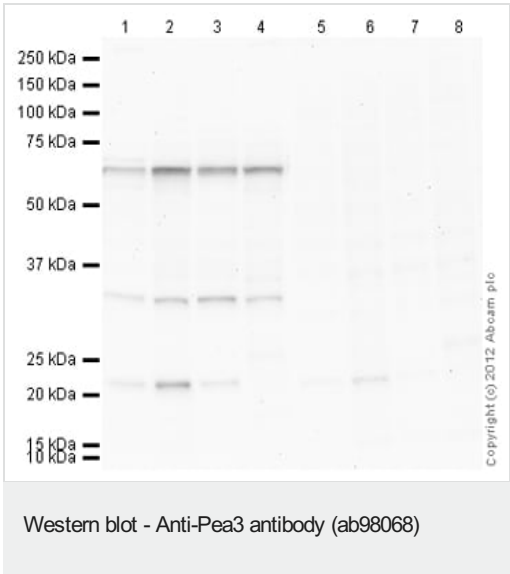
The Abpromise guarantee **Abpromise保証は、**次のテスト済みアプリケーションにおけるab98068の使用に適用されます
 アプリケーションノートには、推奨の開始希釈率がありますが、適切な希釈率につきましてはご確認ください。

アプリケーション	Abreviews	特記事項
WB		Use a concentration of 1 µg/ml. Detects a band of approximately 64 kDa (predicted molecular weight: 54 kDa).

ターゲット情報

機能	Transcriptional activator that binds to the enhancer of the adenovirus E1A gene; the core-binding sequence is 5'[AC]GGA[AT]GT-3'.
配列類似性	Belongs to the ETS family. Contains 1 ETS DNA-binding domain.
翻訳後修飾	Sumoylated; enhanced upon ERK/MAP kinase pathway activation, it positively regulates the transcriptional activator capacity. Sumoylation at Lys-96 probably requires phosphorylation at Ser-101. Transiently polysumoylated and desumoylated by SENP1. Sumoylation is a prerequisite to polyubiquitination which in turn increases proteasomal-mediated degradation. Probably polyubiquitinated by RNF4 and deubiquitinated by USP2.
細胞内局在	Nucleus.

画像



All lanes : Anti-Pea3 antibody (ab98068) at 1 µg/ml

Lane 1 : MCF7 (Human breast adenocarcinoma cell line) Whole Cell Lysate

Lane 2 : K562 (Human erythromyeloblastoid leukemia cell line) Whole Cell Lysate

Lane 3 : Jurkat (Human T cell lymphoblast-like cell line) Whole Cell Lysate

Lane 4 : HepG2 (Human hepatocellular liver carcinoma cell line) Whole Cell Lysate

Lane 5 : MCF7 (Human breast adenocarcinoma cell line) Whole Cell Lysate with Immunising peptide at 1 µg/ml

Lane 6 : K562 (Human erythromyeloblastoid leukemia cell line) Whole Cell Lysate with Immunising peptide at 1 µg/ml

Lane 7 : Jurkat (Human T cell lymphoblast-like cell line) Whole Cell

Lysate with Immunising peptide at 1 µg/ml

Lane 8 : HepG2 (Human hepatocellular liver carcinoma cell line)

Whole Cell Lysate with Immunising peptide at 1 µg/ml

Lysates/proteins at 20 µg per lane.

Secondary

All lanes : Goat Anti-Rabbit IgG H&L (HRP) preadsorbed
(**ab97080**) at 1/5000 dilution

Developed using the ECL technique.

Performed under reducing conditions.

Predicted band size: 54 kDa

Observed band size: 64 kDa

Additional bands at: 22 kDa, 33 kDa. We are unsure as to the identity of these extra bands.

Exposure time: 2 minutes

The predicted molecular weight of Pea3 is 54 kDa (SwissProt), however we expect to observe a banding pattern around 65 kDa. Abcam welcomes customer feedback and would appreciate any comments regarding this product and the data presented above.

Please note: All products are "FOR RESEARCH USE ONLY. NOT FOR USE IN DIAGNOSTIC PROCEDURES"

Our Abpromise to you: Quality guaranteed and expert technical support

- Replacement or refund for products not performing as stated on the datasheet
- Valid for 12 months from date of delivery
- Response to your inquiry within 24 hours
- We provide support in Chinese, English, French, German, Japanese and Spanish
- Extensive multi-media technical resources to help you
- We investigate all quality concerns to ensure our products perform to the highest standards

If the product does not perform as described on this datasheet, we will offer a refund or replacement. For full details of the Abpromise, please visit <https://www.abcam.co.jp/abpromise> or contact our technical team.

Terms and conditions

- Guarantee only valid for products bought direct from Abcam or one of our authorized distributors