

PE Anti-Vimentin antibody [VI-RE/1] ab49918

[5 References](#) [画像数 2](#)

製品の概要

製品名	PE Anti-Vimentin antibody [VI-RE/1]
製品の詳細	PE Mouse monoclonal [VI-RE/1] to Vimentin
由来種	Mouse
標識	PE. Ex: 488nm, Em: 575nm
特異性	The antibody VI-RE/1 reacts with human vimentin, a 57 kDa intermediate filament protein expressed on a wide variety of mesenchymal and mesodermal cell types.
アプリケーション	適用あり: ICC/IF, Flow Cyt (Intra)
種交差性	交差種: Human 非交差種: Mouse, Pig
免疫原	Recombinant full length protein corresponding to Human Vimentin. Database link: P08670
ポジティブ・コントロール	ICC/IF: HeLa cells Flow cyt: LEP-19 cells.
特記事項	Conjugated with R-Phycoerythrin (PE) under optimum conditions. The Life Science industry has been in the grips of a reproducibility crisis for a number of years. Abcam is leading the way in addressing this with our range of recombinant monoclonal antibodies and knockout edited cell lines for gold-standard validation. Please check that this product meets your needs before purchasing. If you have any questions, special requirements or concerns, please send us an inquiry and/or contact our Support team ahead of purchase. Recommended alternatives for this product can be found below, along with publications, customer reviews and Q&As

製品の特性

製品の状態	Liquid
保存方法	Shipped at 4°C. Store at +4°C.
バッファー	pH: 7.4 Preservative: 0.097% Sodium azide Constituents: PBS, 0.2% BSA
精製度	Size exclusion
特記事項 (精製)	Purified antibodies – protein A (G) affinity chromatography before conjugation. Conjugated

antibodies –site exclusion chromatography.

ポリ/モノ	モノクローナル
クローン名	VI-RE/1
アイソタイプ	IgG1

アプリケーション

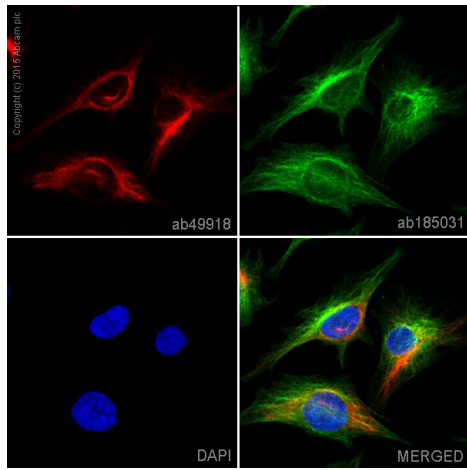
The Abpromise guarantee **Abpromise保証は、次のテスト済みアプリケーションにおけるab49918の使用に適用されず**
アプリケーションノートには、推奨の開始希釈率がありますが、適切な希釈率につきましてはご検討ください。

アプリケーション	Abreviews	特記事項
ICC/IF		Use a concentration of 10 µg/ml.
Flow Cyt (Intra)		Use a concentration of 1 - 5 µg/ml.

ターゲット情報

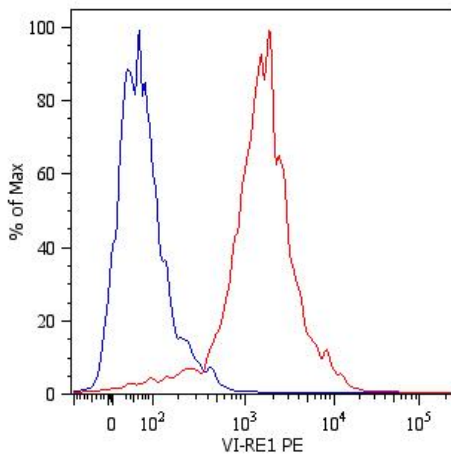
機能	<p>Vimentins are class-III intermediate filaments found in various non-epithelial cells, especially mesenchymal cells. Vimentin is attached to the nucleus, endoplasmic reticulum, and mitochondria, either laterally or terminally.</p> <p>Involved with LARP6 in the stabilization of type I collagen mRNAs for CO1A1 and CO1A2.</p>
組織特異性	<p>Highly expressed in fibroblasts, some expression in T- and B-lymphocytes, and little or no expression in Burkitt's lymphoma cell lines. Expressed in many hormone-independent mammary carcinoma cell lines.</p>
関連疾患	<p>Cataract 30</p>
配列類似性	<p>Belongs to the intermediate filament family.</p>
ドメイン	<p>The central alpha-helical coiled-coil rod region mediates elementary homodimerization. The [IL]-x-C-x-x-[DE] motif is a proposed target motif for cysteine S-nitrosylation mediated by the iNOS-S100A8/A9 transnitrosylase complex.</p>
翻訳後修飾	<p>Filament disassembly during mitosis is promoted by phosphorylation at Ser-55 as well as by nestin (By similarity). One of the most prominent phosphoproteins in various cells of mesenchymal origin. Phosphorylation is enhanced during cell division, at which time vimentin filaments are significantly reorganized. Phosphorylation by PKN1 inhibits the formation of filaments. Phosphorylated at Ser-56 by CDK5 during neutrophil secretion in the cytoplasm. Phosphorylated by STK33.</p> <p>O-glycosylated during cytokinesis at sites identical or close to phosphorylation sites, this interferes with the phosphorylation status.</p> <p>S-nitrosylation is induced by interferon-gamma and oxidatively-modified low-density lipoprotein (LDL(ox)) possibly implicating the iNOS-S100A8/9 transnitrosylase complex.</p>
細胞内局在	<p>Cytoplasm.</p>
製品の状態	<p>Vimentin is found in connective tissue and in the cytoskeleton.</p>

画像



Immunocytochemistry/ Immunofluorescence - PE
Anti-Vimentin antibody [VI-RE/1] (ab49918)

ab49918 staining Vimentin in HeLa cells. The cells were fixed with 4% formaldehyde (10 min), permeabilized in 0.1% Triton X-100 for 5 minutes and then blocked in 1% BSA/10% normal goat serum/0.3M glycine in 0.1% PBS-Tween for 1h. The cells were then incubated with ab49918 at a working concentration of 10µg/ml (shown in red) and **ab185031**, Rabbit monoclonal [EP1332Y] to alpha Tubulin (Alexa Fluor® 488, shown in green) at 1/250 overnight at +4°C. Nuclear DNA was labelled in blue with DAPI. Image was taken with a confocal microscope (Leica-Microsystems, TCS SP8).



Flow Cytometry (Intracellular) - PE Anti-Vimentin
antibody [VI-RE/1] (ab49918)

Flow cytometry analysis (intracellular staining) of Vimentin in LEP-19 human fibroblast cell line using ab49918 anti-human Vimentin (VI-RE/1) PE. Overlay with Isotype mouse IgG1 control.

Please note: All products are "FOR RESEARCH USE ONLY. NOT FOR USE IN DIAGNOSTIC PROCEDURES"

Our Abpromise to you: Quality guaranteed and expert technical support

- Replacement or refund for products not performing as stated on the datasheet
- Valid for 12 months from date of delivery
- Response to your inquiry within 24 hours
- We provide support in Chinese, English, French, German, Japanese and Spanish
- Extensive multi-media technical resources to help you
- We investigate all quality concerns to ensure our products perform to the highest standards

If the product does not perform as described on this datasheet, we will offer a refund or replacement. For full details of the Abpromise, please visit <https://www.abcam.co.jp/abpromise> or contact our technical team.

Terms and conditions

- Guarantee only valid for products bought direct from Abcam or one of our authorized distributors