

PE Anti-TRAIL antibody [N2B2] ab95532

3 References [画像数 1](#)

製品の概要

製品名	PE Anti-TRAIL antibody [N2B2]
製品の詳細	PE Rat monoclonal [N2B2] to TRAIL
由来種	Rat
標識	PE. Ex: 488nm, Em: 575nm
アプリケーション	適用あり: Flow Cyt
種交差性	交差種: Mouse
免疫原	Tissue, cells or virus corresponding to Mouse TRAIL. Mouse TRAIL-transfected 2PK-3 cells. Database link: P50592
ポジティブ・コントロール	Flow Cyt: Mouse TRAIL transfected cells.
特記事項	<p>ab95532 inhibits IL-2 or IL-15 activated NK cell cytotoxicity against mouse fibrosarcoma L929 target cells.</p> <p>The Life Science industry has been in the grips of a reproducibility crisis for a number of years. Abcam is leading the way in addressing this with our range of recombinant monoclonal antibodies and knockout edited cell lines for gold-standard validation. Please check that this product meets your needs before purchasing.</p> <p>If you have any questions, special requirements or concerns, please send us an inquiry and/or contact our Support team ahead of purchase. Recommended alternatives for this product can be found below, along with publications, customer reviews and Q&As</p>

製品の特性

製品の状態	Liquid
保存方法	Shipped at 4°C. Store at +4°C.
バッファー	pH: 7.20 Preservative: 0.09% Sodium azide Constituents: 0.87% Sodium chloride, PBS
精製度	Protein G purified
一次抗体 備考	ab95532 inhibits IL-2 or IL-15 activated NK cell cytotoxicity against mouse fibrosarcoma L929 target cells.

ポリ/モノ	モノクローナル
クローン名	N2B2
アイソタイプ	IgG2a
軽鎖の種類	kappa

アプリケーション

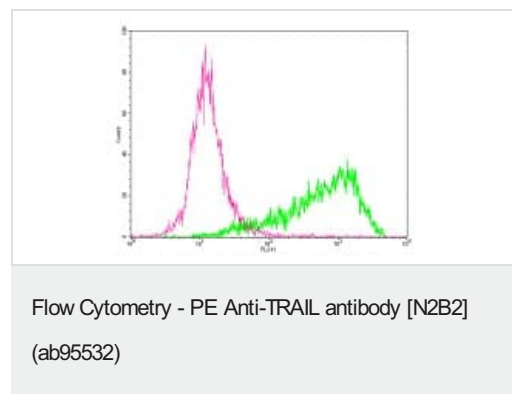
The Abpromise guarantee **Abpromise保証は、次のテスト済みアプリケーションにおけるab95532の使用に適用されます**
 アプリケーションノートには、推奨の開始希釈率がありますが、適切な希釈率につきましてはご検討ください。

アプリケーション	Abreviews	特記事項
Flow Cyt		Use 0.06-0.125µg for 10 ⁵⁻⁸ cells. Staining the cell sample in a final volume of 100µl is recommended.

ターゲット情報

機能	Cytokine that binds to TNFRSF10A/TRAILR1, TNFRSF10B/TRAILR2, TNFRSF10C/TRAILR3, TNFRSF10D/TRAILR4 and possibly also to TNFRSF11B/OPG. Induces apoptosis. Its activity may be modulated by binding to the decoy receptors TNFRSF10C/TRAILR3, TNFRSF10D/TRAILR4 and TNFRSF11B/OPG that cannot induce apoptosis.
組織特異性	Widespread; most predominant in spleen, lung and prostate.
配列類似性	Belongs to the tumor necrosis factor family.
細胞内局在	Membrane.

画像



Flow cytometry staining of TRAIL-transfected cells with 0.06 µg of Rat IgG2a Isotype Control PE (pink histogram) or 0.06 µg of ab95532 (green histogram). Total viable cells were used for analysis.

Please note: All products are "FOR RESEARCH USE ONLY. NOT FOR USE IN DIAGNOSTIC PROCEDURES"

Our Abpromise to you: Quality guaranteed and expert technical support

- Replacement or refund for products not performing as stated on the datasheet
- Valid for 12 months from date of delivery
- Response to your inquiry within 24 hours

- We provide support in Chinese, English, French, German, Japanese and Spanish
- Extensive multi-media technical resources to help you
- We investigate all quality concerns to ensure our products perform to the highest standards

If the product does not perform as described on this datasheet, we will offer a refund or replacement. For full details of the Abpromise, please visit <https://www.abcam.co.jp/abpromise> or contact our technical team.

Terms and conditions

- Guarantee only valid for products bought direct from Abcam or one of our authorized distributors