

### PE Anti-TLR3 antibody [40C1285.6] ab45093

★★★★★ [2 Abreviews](#) [1 References](#) [画像数 2](#)

#### 製品の概要

製品名	PE Anti-TLR3 antibody [40C1285.6]
製品の詳細	PE Mouse monoclonal [40C1285.6] to TLR3
由来種	Mouse
標識	PE. Ex: 488nm, Em: 575nm
アプリケーション	<b>適用あり:</b> Flow Cyt (Intra)
種交差性	<b>交差種:</b> Human
免疫原	This antibody was developed against KLH-conjugated synthetic peptide of human TLR3.
ポジティブ・コントロール	Human intestine or Ramos. Flow Cyt (Intra): Ramos, A549 cells
特記事項	<p>The Life Science industry has been in the grips of a reproducibility crisis for a number of years. Abcam is leading the way in addressing this with our range of recombinant monoclonal antibodies and knockout edited cell lines for gold-standard validation. Please check that this product meets your needs before purchasing.</p> <p>If you have any questions, special requirements or concerns, please send us an inquiry and/or contact our Support team ahead of purchase. Recommended alternatives for this product can be found below, along with publications, customer reviews and Q&amp;As</p>

#### 製品の特性

製品の状態	Liquid
保存方法	Shipped at 4°C. Store at +4°C.
バッファー	Preservative: 0.02% Sodium azide Constituent: PBS
精製度	Protein G purified
ポリ/モノ	モノクローナル
クローン名	40C1285.6
アイソタイプ	IgG1

#### アプリケーション

## The Abpromise guarantee

**Abpromise保証は、次のテスト済みアプリケーションにおけるab45093の使用に適用されます**

アプリケーションノートには、推奨の開始希釈率がありますが、適切な希釈率につきましてはご検討ください。

アプリケーション	Abreviews	特記事項
Flow Cyt (Intra)		

### 追加情報

FACS:(Intracellular) Use 2 - 5µg for 10<sup>6</sup> cells.

WB: Use at a concentration of 1 - 3 µg/ml. Predicted molecular weight: 104 kDa.

This antibody has tested negative by western blot in mouse intestine cell lysate.

Not yet tested in other applications.

Optimal dilutions/concentrations should be determined by the end user.

### ターゲット情報

#### 機能

Key component of innate and adaptive immunity. TLRs (Toll-like receptors) control host immune response against pathogens through recognition of molecular patterns specific of microorganisms. TLR3 is a nucleotide-sensing TLR which is activated by double-stranded RNA, a sign of viral infection. Acts via MYD88 and TRAF6, leading to NF-kappa-B activation, cytokine secretion and the inflammatory response.

#### 組織特異性

Expressed at high level in placenta and pancreas. Also detected in CD11c+ immature dendritic cells. Only expressed in dendritic cells and not in other leukocytes, including monocyte precursors. TLR3 is the TLR that is expressed most strongly in the brain, especially in astrocytes, glia, and neurons.

#### 関連疾患

Defects in TLR3 are associated with herpes simplex encephalitis type 2 (HSE2) [MIM:613002]. HSE is a rare complication of human herpesvirus 1 (HHV-1) infection, occurring in only a small minority of HHV-1 infected individuals. HSE is characterized by hemorrhagic necrosis of parts of the temporal and frontal lobes. Onset is over several days and involves fever, headache, seizures, stupor, and often coma, frequently with a fatal outcome. Note=TLR3 mutations predispose otherwise healthy individuals to isolated herpes simplex encephalitis through a mechanism that involves impaired IFNs production and reduced immune defense against viral infection in the central nervous system.

#### 配列類似性

Belongs to the Toll-like receptor family.  
Contains 22 LRR (leucine-rich) repeats.  
Contains 1 LRRCT domain.  
Contains 1 LRRNT domain.  
Contains 1 TIR domain.

#### ドメイン

ds-RNA binding is mediated by LRR 1 to 3, and LRR 17 to 18.

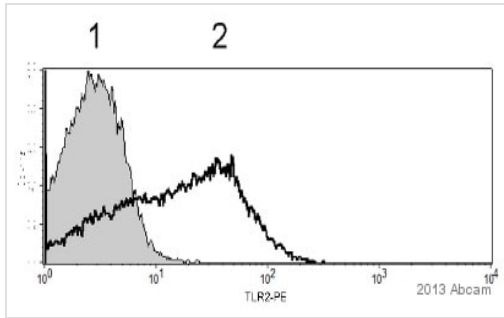
#### 翻訳後修飾

Heavily N-glycosylated, except on that part of the surface of the ectodomain that is involved in ligand binding.

#### 細胞内局在

Endoplasmic reticulum membrane. Endosome membrane.

### 画像

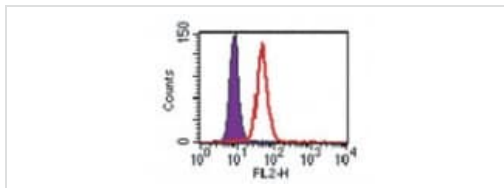


Flow Cytometry (Intracellular) - PE Anti-TLR3

antibody [40C1285.6] (ab45093)

This image is courtesy of an anonymous Abreview

ab45093 staining TLR3 in Human A549 (lung epithelial) cell line by Flow Cytometry. The sample was incubated with the primary antibody (5µg/ml in 0.1% Saponin + 1% FCS in PBS) for 45 minutes at 4°C. 1 = isotype control, 2 = ab45093



Flow Cytometry (Intracellular) - PE Anti-TLR3

antibody [40C1285.6] (ab45093)

ab45093, at 3 ug/ 1X10<sup>6</sup> cells, staining Ramos cells by Intracellular flow cytometric analysis. Toll-Like-Receptor3 (open peak) and isotype negative control (shaded peak).

**Please note:** All products are "FOR RESEARCH USE ONLY. NOT FOR USE IN DIAGNOSTIC PROCEDURES"

### Our Abpromise to you: Quality guaranteed and expert technical support

- Replacement or refund for products not performing as stated on the datasheet
- Valid for 12 months from date of delivery
- Response to your inquiry within 24 hours
- We provide support in Chinese, English, French, German, Japanese and Spanish
- Extensive multi-media technical resources to help you
- We investigate all quality concerns to ensure our products perform to the highest standards

If the product does not perform as described on this datasheet, we will offer a refund or replacement. For full details of the Abpromise, please visit <https://www.abcam.co.jp/abpromise> or contact our technical team.

### Terms and conditions

- Guarantee only valid for products bought direct from Abcam or one of our authorized distributors