

PE Anti-TCR gamma + TCR delta antibody [UC7-13D5] ab25663

4 References [画像数 1](#)

製品の概要

製品名	PE Anti-TCR gamma + TCR delta antibody [UC7-13D5]
製品の詳細	PE Armenian hamster monoclonal [UC7-13D5] to TCR gamma + TCR delta
由来種	Armenian hamster
標識	PE. Ex: 488nm, Em: 575nm
特異性	ab25663 is specific for the gamma-delta heterodimer and plate-bound ab25663 activates gamma-delta TRC-bearing cells. This antibody does not react with alpha-beta TCR-expressing T cells.
アプリケーション	適用あり: Flow Cyt
種交差性	交差種: Mouse
免疫原	Tissue, cells or virus corresponding to TCR gamma + TCR delta. Mouse T cell clone G8
ポジティブ・コントロール	Flow Cyt: C57BL/6 mouse mesenteric lymph node cells.
特記事項	<p>The Life Science industry has been in the grips of a reproducibility crisis for a number of years. Abcam is leading the way in addressing this with our range of recombinant monoclonal antibodies and knockout edited cell lines for gold-standard validation. Please check that this product meets your needs before purchasing.</p> <p>If you have any questions, special requirements or concerns, please send us an inquiry and/or contact our Support team ahead of purchase. Recommended alternatives for this product can be found below, along with publications, customer reviews and Q&As</p>

製品の特性

製品の状態	Liquid
保存方法	Shipped at 4°C. Store at +4°C. Do Not Freeze. Store In the Dark.
バッファー	pH: 7.3 Preservative: 0.09% Sodium azide Constituent: PBS
精製度	Affinity purified
ポリ/モノ	モノクローナル
クローン名	UC7-13D5
アイソタイプ	IgG

アプリケーション

The Abpromise guarantee

Abpromise保証は、次のテスト済みアプリケーションにおけるab25663の使用に適用されます

アプリケーションノートには、推奨の開始希釈率がありますが、適切な希釈率につきましてはご確認ください。

アプリケーション	Abreviews	特記事項
Flow Cyt		Use at an assay dependent concentration.

ターゲット情報

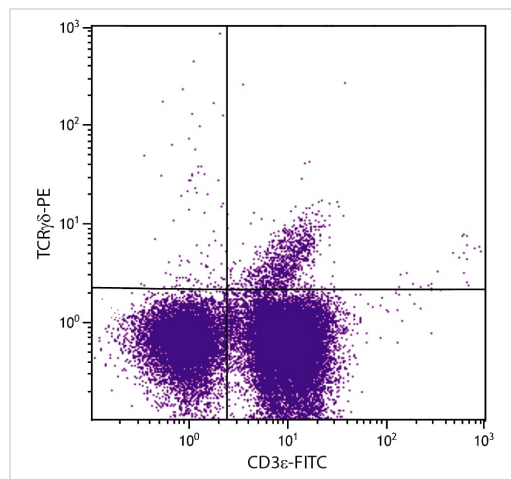
関連性

T cell receptors (TCR) recognize foreign antigens which have been processed as small peptides and bound to major histocompatibility complex (MHC) molecules at the surface of antigen presenting cells (APC). Each T cell receptor is a dimer consisting of one α and one β chain or one δ and one γ chain. This region represents the germline organization of the T cell receptor beta locus. The beta locus includes V (variable), J (joining), diversity (D), and C (constant) segments. During T cell development, the beta chain is synthesized by a recombination event at the DNA level joining a D segment with a J segment; a V segment is then joined to the D-J gene. The C segment is later joined by splicing at the RNA level. The γ/δ TCR associates with CD3 and is expressed on a T cell subset found in the thymus, the intestinal epithelium, and the peripheral lymphoid tissues and peritoneum. Most γ/δ T cells are CD4-/CD8-, some are CD8+. T cells expressing the γ/δ TCR have been shown to play a role in oral tolerance, tumor-associated tolerance, and autoimmune disease.

細胞内局在

Type I membrane protein

画像



Flow Cytometry - PE Anti-TCR gamma + TCR delta antibody [UC7-13D5] (ab25663)

Flow cytometric analysis of C57BL/6 mouse mesenteric lymph node cells labeling TCR gamma + TCR delta using ab25663 at 0.3 $\mu\text{g}/10^6$ cells. CD3 ϵ is labeled using a Rat Anti-Mouse CD3 ϵ (FITC) antibody.

Please note: All products are "FOR RESEARCH USE ONLY. NOT FOR USE IN DIAGNOSTIC PROCEDURES"

Our Abpromise to you: Quality guaranteed and expert technical support

- Replacement or refund for products not performing as stated on the datasheet
- Valid for 12 months from date of delivery
- Response to your inquiry within 24 hours

- We provide support in Chinese, English, French, German, Japanese and Spanish
- Extensive multi-media technical resources to help you
- We investigate all quality concerns to ensure our products perform to the highest standards

If the product does not perform as described on this datasheet, we will offer a refund or replacement. For full details of the Abpromise, please visit <https://www.abcam.co.jp/abpromise> or contact our technical team.

Terms and conditions

- Guarantee only valid for products bought direct from Abcam or one of our authorized distributors