

PE Anti-Perforin antibody [B-D48] ab47226

12 References 画像数 1

医薬用外毒物

製品の概要

| | |
|--------------|--|
| 製品名 | PE Anti-Perforin antibody [B-D48] |
| 製品の詳細 | PE Mouse monoclonal [B-D48] to Perforin |
| 由来種 | Mouse |
| 標識 | PE. Ex: 488nm, Em: 575nm |
| 特異性 | Recognizes human Perforin, a 70 kDa protein. |
| アプリケーション | 適用あり: Flow Cyt (Intra) |
| 種交差性 | 交差種: Human |
| 免疫原 | Recombinant full length protein corresponding to Human Perforin. |
| ポジティブ・コントロール | Flow Cyt (Intra): YT-Indy cell line |
| 特記事項 | <p>This product was changed from ascites to tissue culture supernatant on 19th June 2019. Please note that the dilutions may need to be adjusted accordingly. If you have any questions, please do not hesitate to contact our scientific support team.</p> <p>The Life Science industry has been in the grips of a reproducibility crisis for a number of years. Abcam is leading the way in addressing this with our range of recombinant monoclonal antibodies and knockout edited cell lines for gold-standard validation. Please check that this product meets your needs before purchasing.</p> <p>If you have any questions, special requirements or concerns, please send us an inquiry and/or contact our Support team ahead of purchase. Recommended alternatives for this product can be found below, along with publications, customer reviews and Q&As</p> |

製品の特性

| | |
|-------|---|
| 製品の状態 | Lyophilized:Reconstitute with 1 ml deionised water. |
| 保存方法 | Shipped at 4°C. Store at +4°C. |
| バッファー | <p>pH: 7.30</p> <p>Preservative: 0.09% Sodium azide</p> <p>Constituents: 94.91% PBS, 5% BSA</p> |
| 精製度 | Tissue culture supernatant |
| ポリ/モノ | モノクローナル |

| | |
|--------|-------------|
| クローン名 | B-D48 |
| ミエローマ | x63-Ag8.653 |
| アイソタイプ | IgG1 |
| 軽鎖の種類 | kappa |

アプリケーション

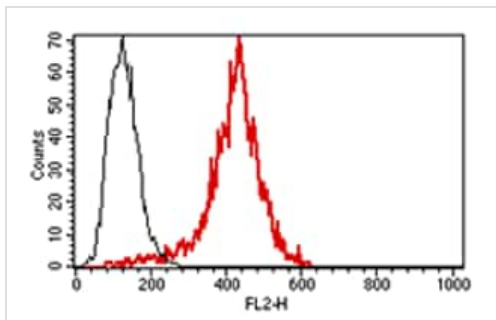
The Abpromise guarantee **Abpromise保証は、** 次のテスト済みアプリケーションにおけるab47226の使用に適用されます
アプリケーションノートには、推奨の開始希釈率がありますが、適切な希釈率につきましてはご検討ください。

| アプリケーション | Abreviews | 特記事項 |
|------------------|-----------|--|
| Flow Cyt (Intra) | | <p>Use at an assay dependent concentration. Use 10 µl to label 10⁶ cells or 100 µl of whole blood.</p> <p>ab91357 - Mouse monoclonal IgG1, is suitable for use as an isotype control with this antibody.</p> |

ターゲット情報

| | |
|-------|---|
| 機能 | Plays a key role in secretory granule-dependent cell death, and in defense against virus-infected or neoplastic cells. Plays an important role in killing other cells that are recognized as non-self by the immune system, e.g. in transplant rejection or some forms of autoimmune disease. Can insert into the membrane of target cells in its calcium-bound form, oligomerize and form large pores. Promotes cytolysis and apoptosis of target cells by facilitating the uptake of cytotoxic granzymes. |
| 関連疾患 | Defects in PRF1 are the cause of hemophagocytic lymphohistiocytosis familial type 2 (FHL2) [MIM:603553]; also known as HPLH2. Familial hemophagocytic lymphohistiocytosis (FHL) is a genetically heterogeneous, rare autosomal recessive disorder. It is characterized by immune dysregulation with hypercytokinemia and defective natural killer cell function. The clinical features of the disease include fever, hepatosplenomegaly, cytopenia, hypertriglyceridemia, hypofibrinogenemia, and neurological abnormalities ranging from irritability and hypotonia to seizures, cranial nerve deficits, and ataxia. Hemophagocytosis is a prominent feature of the disease, and a non-malignant infiltration of macrophages and activated T lymphocytes in lymph nodes, spleen, and other organs is also found. |
| 配列類似性 | <p>Belongs to the complement C6/C7/C8/C9 family.</p> <p>Contains 1 C2 domain.</p> <p>Contains 1 EGF-like domain.</p> <p>Contains 1 MACPF domain.</p> |
| ドメイン | The C2 domain mediates calcium-dependent binding to lipid membranes. A subsequent conformation change leads to membrane insertion of beta-hairpin structures and pore formation. The pore is formed by transmembrane beta-strands. |
| 翻訳後修飾 | N-glycosylated. |
| 細胞内局在 | Cytoplasmic granule lumen. Secreted. Cell membrane. Endosome lumen. Stored in cytoplasmic granules of cytolytic T-lymphocytes and secreted into the cleft between T-lymphocyte and target cell. Inserts into the cell membrane of target cells and forms pores. Membrane insertion and pore formation requires a major conformation change. May be taken up via endocytosis involving clathrin-coated vesicles and accumulate in a first time in large early endosomes. |

画像



Flow Cytometry (Intracellular) - PE Anti-Perforin
antibody [B-D48] (ab47226)

Flow cytometric analysis of Perforin in YT-Indy cell line with ab47226.

This image was generated using the ascites version of the product.

Please note: All products are "FOR RESEARCH USE ONLY. NOT FOR USE IN DIAGNOSTIC PROCEDURES"

Our Abpromise to you: Quality guaranteed and expert technical support

- Replacement or refund for products not performing as stated on the datasheet
- Valid for 12 months from date of delivery
- Response to your inquiry within 24 hours
- We provide support in Chinese, English, French, German, Japanese and Spanish
- Extensive multi-media technical resources to help you
- We investigate all quality concerns to ensure our products perform to the highest standards

If the product does not perform as described on this datasheet, we will offer a refund or replacement. For full details of the Abpromise, please visit <https://www.abcam.co.jp/abpromise> or contact our technical team.

Terms and conditions

- Guarantee only valid for products bought direct from Abcam or one of our authorized distributors