

PE Anti-P Glycoprotein antibody [UIC2] ab93590

10 References [画像数 1](#)

製品の概要

製品名	PE Anti-P Glycoprotein antibody [UIC2]
製品の詳細	PE Mouse monoclonal [UIC2] to P Glycoprotein
由来種	Mouse
標識	PE. Ex: 488nm, Em: 575nm
アプリケーション	適用あり: Flow Cyt
種交差性	交差種: Human
免疫原	Tissue, cells or virus corresponding to P Glycoprotein. Mouse Balb/c 3T3 fibroblasts transfected with Human P Glycoprotein cDNA
ポジティブ・コントロール	8226 DOX40 and 8226/S cell lines
特記事項	<p>ab93590 has been reported to inhibit MDR1-mediated efflux.</p> <p>The Life Science industry has been in the grips of a reproducibility crisis for a number of years. Abcam is leading the way in addressing this with our range of recombinant monoclonal antibodies and knockout edited cell lines for gold-standard validation. Please check that this product meets your needs before purchasing.</p> <p>If you have any questions, special requirements or concerns, please send us an inquiry and/or contact our Support team ahead of purchase. Recommended alternatives for this product can be found below, along with publications, customer reviews and Q&As</p>

製品の特性

製品の状態	Liquid
保存方法	Shipped at 4°C. Store at +4°C.
バッファー	pH: 7.2 Preservative: 0.09% Sodium azide
精製度	Protein G purified
一次抗体 備考	ab93590 has been reported to inhibit MDR1-mediated efflux.
ポリ/モノ	モノクローナル
クローン名	UIC2

アプリケーション

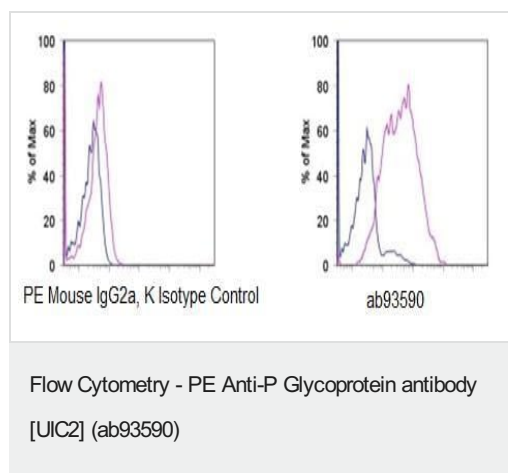
The Abpromise guarantee Abpromise保証は、 次のテスト済みアプリケーションにおけるab93590の使用に適用されます
アプリケーションノートには、推奨の開始希釈率がありますが、適切な希釈率につきましてはご確認ください。

アプリケーション	Abreviews	特記事項
Flow Cyt		Use 5µl for 10 ⁶ cells. Use 5 µl/test for 105-8 cells in 100µl.

ターゲット情報

機能	Energy-dependent efflux pump responsible for decreased drug accumulation in multidrug-resistant cells.
組織特異性	Expressed in liver, kidney, small intestine and brain.
関連疾患	Genetic variations in ABCB1 are associated with susceptibility to inflammatory bowel disease type 13 (IBD13) [MIM:612244]. Inflammatory bowel disease is characterized by a chronic relapsing intestinal inflammation. It is subdivided into Crohn disease and ulcerative colitis phenotypes. Crohn disease may involve any part of the gastrointestinal tract, but most frequently the terminal ileum and colon. Bowel inflammation is transmural and discontinuous; it may contain granulomas or be associated with intestinal or perianal fistulas. In contrast, in ulcerative colitis, the inflammation is continuous and limited to rectal and colonic mucosal layers; fistulas and granulomas are not observed. Both diseases include extraintestinal inflammation of the skin, eyes, or joints. Crohn disease and ulcerative colitis are commonly classified as autoimmune diseases.
配列類似性	Belongs to the ABC transporter superfamily. ABCB family. Multidrug resistance exporter (TC 3.A.1.201) subfamily. Contains 2 ABC transmembrane type-1 domains. Contains 2 ABC transporter domains.
細胞内局在	Membrane.

画像



Staining of the human 8226/S (blue histogram) and human 8226 DOX40 (purple histogram) cell lines with PE Mouse IgG2a, K Isotype Control (left) or ab93590 (right). Total viable cells were used for analysis.

Please note: All products are "FOR RESEARCH USE ONLY. NOT FOR USE IN DIAGNOSTIC PROCEDURES"

Our Abpromise to you: Quality guaranteed and expert technical support

- Replacement or refund for products not performing as stated on the datasheet
- Valid for 12 months from date of delivery
- Response to your inquiry within 24 hours
- We provide support in Chinese, English, French, German, Japanese and Spanish
- Extensive multi-media technical resources to help you
- We investigate all quality concerns to ensure our products perform to the highest standards

If the product does not perform as described on this datasheet, we will offer a refund or replacement. For full details of the Abpromise, please visit <https://www.abcam.co.jp/abpromise> or contact our technical team.

Terms and conditions

- Guarantee only valid for products bought direct from Abcam or one of our authorized distributors