

### PE Anti-NKR-P1C antibody [PK136] ab25027

#### 画像数 1

#### 製品の概要

製品名	PE Anti-NKR-P1C antibody [PK136]
製品の詳細	PE Mouse monoclonal [PK136] to NKR-P1C
由来種	Mouse
標識	PE. Ex: 488nm, Em: 575nm
アプリケーション	<b>適用あり:</b> Flow Cyt
種交差性	<b>交差種:</b> Mouse
免疫原	Tissue, cells or virus corresponding to Mouse NKR-P1C.
ポジティブ・コントロール	Flow Cyt: Mouse spleen cells.
特記事項	<p>This antibody can be used for <i>in vitro</i> complement dependent cytotoxicity assays, <i>in vivo</i> depletion and <i>in vitro</i> activation of NKR-P1C cells and <i>in vitro</i> redirected lysis.</p> <p>The Life Science industry has been in the grips of a reproducibility crisis for a number of years. Abcam is leading the way in addressing this with our range of recombinant monoclonal antibodies and knockout edited cell lines for gold-standard validation. Please check that this product meets your needs before purchasing.</p> <p>If you have any questions, special requirements or concerns, please send us an inquiry and/or contact our Support team ahead of purchase. Recommended alternatives for this product can be found below, along with publications, customer reviews and Q&amp;As</p>

#### 製品の特性

製品の状態	Liquid
保存方法	Shipped at 4°C. Store at +4°C. Do Not Freeze. Store In the Dark.
バッファー	pH: 7.20 Preservative: 0.09% Sodium azide Constituents: 0.1% Gelatin, 0.88% Sodium chloride, 0.12% Monobasic dihydrogen sodium phosphate
精製度	Affinity purified
特記事項(精製)	Purified from TCS
一次抗体 備考	This antibody can be used for <i>in vitro</i> complement dependent cytotoxicity assays, <i>in vivo</i> depletion and <i>in vitro</i> activation of NK1.1 cells and <i>in vitro</i> redirected lysis.

ポリクローナル	モノクローナル
クローン名	PK136
アイソタイプ	IgG2a
軽鎖の種類	kappa

## アプリケーション

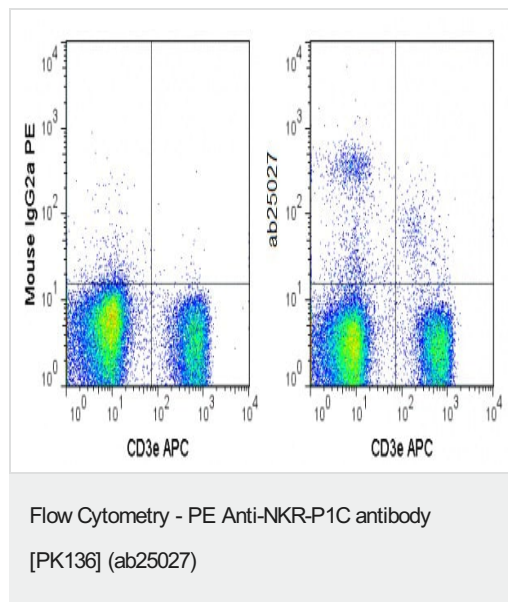
**The Abpromise guarantee** Abpromise保証は、次のテスト済みアプリケーションにおけるab25027の使用に適用されます  
 アプリケーションノートには、推奨の開始希釈率がありますが、適切な希釈率につきましてはご確認ください。

アプリケーション	Abreviews	特記事項
Flow Cyt		Use at an assay dependent concentration.

## ターゲット情報

機能	Plays a stimulatory role on natural killer (NK) cells cytotoxicity. Activation by cross-linking of the receptor induces Ca(2+) mobilization and interferon-gamma production.
組織特異性	Expressed in natural killer cells.
配列類似性	Contains 1 C-type lectin domain.
細胞内局在	Membrane.

## 画像



C57Bl/6 splenocytes stained with APC-conjugated anti-CD3e and 0.5µg ab25027 (right) or 0.5µg PE-conjugated mouse IgG2a isotype control (left).

**Please note:** All products are "FOR RESEARCH USE ONLY. NOT FOR USE IN DIAGNOSTIC PROCEDURES"

**Our Abpromise to you: Quality guaranteed and expert technical support**

- 
- Replacement or refund for products not performing as stated on the datasheet
  - Valid for 12 months from date of delivery
  - Response to your inquiry within 24 hours
  
  - We provide support in Chinese, English, French, German, Japanese and Spanish
  - Extensive multi-media technical resources to help you
  - We investigate all quality concerns to ensure our products perform to the highest standards

If the product does not perform as described on this datasheet, we will offer a refund or replacement. For full details of the Abpromise, please visit <https://www.abcam.co.jp/abpromise> or contact our technical team.

### **Terms and conditions**

---

- Guarantee only valid for products bought direct from Abcam or one of our authorized distributors