

PE Anti-Macrophage antibody [HIS36] ab95574

画像数 1

製品の概要

製品名	PE Anti-Macrophage antibody [HIS36]
製品の詳細	PE Mouse monoclonal [HIS36] to Macrophage
由来種	Mouse
標識	PE. Ex: 488nm, Em: 575nm
アプリケーション	適用あり: Flow Cyt
種交差性	交差種: Rat
免疫原	Tissue, cells or virus corresponding to Rat Macrophage. Rat bone marrow cells.
ポジティブ・コントロール	Rat spleen and peritoneal cells
特記事項	

The HIS36 monoclonal antibody reacts with a molecule expressed on the surface of Rat macrophages. The antigen recognized by HIS36 is an ED2-like antigen expressed by thioglycolate elicited peritoneal cells and tissue macrophages. ab95574 is used as a marker for Rat tissue macrophages.

The Life Science industry has been in the grips of a reproducibility crisis for a number of years. Abcam is leading the way in addressing this with our range of recombinant monoclonal antibodies and knockout edited cell lines for gold-standard validation. Please check that this product meets your needs before purchasing.

If you have any questions, special requirements or concerns, please send us an inquiry and/or contact our Support team ahead of purchase. Recommended alternatives for this product can be found below, along with publications, customer reviews and Q&As

製品の特性

製品の状態	Liquid
保存方法	Shipped at 4°C. Store at +4°C.
バッファー	pH: 7.20 Preservative: 0.09% Sodium azide Constituents: 0.87% Sodium chloride, PBS
精製度	Protein G purified
一次抗体 備考	The HIS36 monoclonal antibody reacts with a molecule expressed on the surface of Rat

macrophages. The antigen recognized by HIS36 is an ED2-like antigen expressed by thioglycolate elicited peritoneal cells and tissue macrophages. ab95574 is used as a marker for Rat tissue macrophages.

ポリクローナル	モノクローナル
クローン名	HIS36
アイソタイプ	IgG2a
軽鎖の種類	kappa

アプリケーション

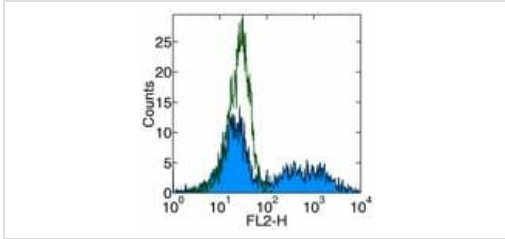
The Abpromise guarantee **Abpromise保証は、次のテスト済みアプリケーションにおけるab95574の使用に適用されません**
アプリケーションノートには、推奨の開始希釈率がありますが、適切な希釈率につきましてはご検討ください。

アプリケーション	Abreviews	特記事項
Flow Cyt		Use 0.25-0.5µg for 10 ⁵⁻⁸ cells. A final volume of 100 µL is recommended for staining the cell sample.

ターゲット情報

関連性 Macrophages comprise of many forms of mononuclear phagocytes found in tissues. Mononuclear phagocytes arise from hematopoietic stem cells in the bone marrow. After passing through the monoblast and promonocyte states of the monocyte stage, they enter the blood, where they circulate for about 40 hours. They then enter tissues and increase in size, phagocytic activity, and lysosomal enzyme content becoming macrophages. Among the functions of macrophages are nonspecific phagocytosis and pinocytosis, specific phagocytosis of opsonized microorganisms mediated by Fc receptors and complement receptors, killing of ingested microorganisms, digestion and presentation of antigens to T and B lymphocytes, and secretion of a large number of diverse products, including many enzymes including lysozyme and collagenases, several complement components and coagulation factors, some prostaglandins and leukotrienes, and many regulatory molecules (Interferon, Interleukin 1). Among cells that are now recognised as macrophages are histiocytes, Kupffer cells, osteoclasts, microglial cells, synovial type A cells, interdigitating cells, and Langerhans cells (in normal tissues) and epithelioid cells and Langerhans-type and foreign-body-type multinucleated giant cells (in inflamed tissues).

画像



Flow Cytometry - PE Anti-Macrophage antibody
[HIS36] (ab95574)

ab95574, at 0.25 μg per test, staining Rat thioglycolate induced peritoneal exudate cells (PECs) by flow cytometry (filled histogram). The open histogram shows staining with 0.25 μg of Mouse IgG2a ? Isotype Control PE. Total viable cells were used for analysis.

Please note: All products are "FOR RESEARCH USE ONLY. NOT FOR USE IN DIAGNOSTIC PROCEDURES"

Our Abpromise to you: Quality guaranteed and expert technical support

- Replacement or refund for products not performing as stated on the datasheet
- Valid for 12 months from date of delivery
- Response to your inquiry within 24 hours
- We provide support in Chinese, English, French, German, Japanese and Spanish
- Extensive multi-media technical resources to help you
- We investigate all quality concerns to ensure our products perform to the highest standards

If the product does not perform as described on this datasheet, we will offer a refund or replacement. For full details of the Abpromise, please visit <https://www.abcam.co.jp/abpromise> or contact our technical team.

Terms and conditions

- Guarantee only valid for products bought direct from Abcam or one of our authorized distributors