


# PE Anti-M6PR (cation independent) antibody [MEM-238] ab77135

[1 References](#) [画像数 1](#)

### 製品の概要

製品名	PE Anti-M6PR (cation independent) antibody [MEM-238]
製品の詳細	PE Mouse monoclonal [MEM-238] to M6PR (cation independent)
由来種	Mouse
標識	PE. Ex: 488nm, Em: 575nm
アプリケーション	<b>適用あり:</b> Flow Cyt (Intra), Flow Cyt
種交差性	<b>交差種:</b> Human <b>交差が予測される動物種:</b> Non human primates 
免疫原	Tissue, cells or virus corresponding to Human M6PR (cation independent).
エピトープ	Ab77135 recognizes an epitope between domains 2 and 5 of CD222
ポジティブ・コントロール	Flow Cyt: Human blood cells
特記事項	<p>The Life Science industry has been in the grips of a reproducibility crisis for a number of years. Abcam is leading the way in addressing this with our range of recombinant monoclonal antibodies and knockout edited cell lines for gold-standard validation. Please check that this product meets your needs before purchasing.</p> <p>If you have any questions, special requirements or concerns, please send us an inquiry and/or contact our Support team ahead of purchase. Recommended alternatives for this product can be found below, along with publications, customer reviews and Q&amp;As</p>

### 製品の特性

製品の状態	Liquid
保存方法	Shipped at 4°C. Store at +4°C.
バッファー	<p>pH: 7.4</p> <p>Preservative: 0.097% Sodium azide</p> <p>Constituents: 0.2% BSA, 0.2% PBS</p> <p>0.2% BSA (high-grade protease free)</p>
精製度	Size exclusion
特記事項 (精製)	Purity >95% by SDS-PAGE.

ポリ/モノ	モノクローナル
クローン名	MEM-238
アイソタイプ	IgG1

## アプリケーション

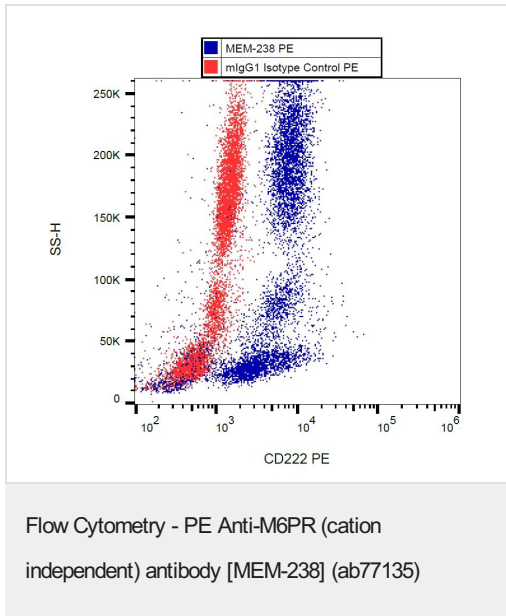
**The Abpromise guarantee**      **Abpromise保証は、**次のテスト済みアプリケーションにおけるab77135の使用に適用されます  
アプリケーションノートには、推奨の開始希釈率がありますが、適切な希釈率につきましてはご検討ください。

アプリケーション	Abreviews	特記事項
Flow Cyt (Intra)		Use at an assay dependent concentration. Use 20 ul for 10 <sup>6</sup> cells in a suspension or 100 ul of whole blood. <b>ab91357</b> - Mouse monoclonal IgG1, is suitable for use as an isotype control with this antibody.
Flow Cyt		Use at an assay dependent concentration.

## ターゲット情報

機能	Transport of phosphorylated lysosomal enzymes from the Golgi complex and the cell surface to lysosomes. Lysosomal enzymes bearing phosphomannosyl residues bind specifically to mannose-6-phosphate receptors in the Golgi apparatus and the resulting receptor-ligand complex is transported to an acidic prelysosomal compartment where the low pH mediates the dissociation of the complex. This receptor also binds IGF2. Acts as a positive regulator of T-cell coactivation, by binding DPP4.
配列類似性	Belongs to the MRL1/IGF2R family. Contains 1 fibronectin type-II domain.
ドメイン	Contains 15 repeating units of approximately 147 AA harboring four disulfide bonds each. The most highly conserved region within the repeat consists of a stretch of 13 AA that contains cysteines at both ends.
細胞内局在	Lysosome membrane. Colocalized with DPP4 in internalized cytoplasmic vesicles adjacent to the cell surface.

## 画像



Flow cytometry analysis (intracellular staining) of human peripheral blood with anti-CD222 (MEM-238) PE.

**Please note:** All products are "FOR RESEARCH USE ONLY. NOT FOR USE IN DIAGNOSTIC PROCEDURES"

### Our Abpromise to you: Quality guaranteed and expert technical support

- Replacement or refund for products not performing as stated on the datasheet
- Valid for 12 months from date of delivery
- Response to your inquiry within 24 hours
- We provide support in Chinese, English, French, German, Japanese and Spanish
- Extensive multi-media technical resources to help you
- We investigate all quality concerns to ensure our products perform to the highest standards

If the product does not perform as described on this datasheet, we will offer a refund or replacement. For full details of the Abpromise, please visit <https://www.abcam.co.jp/abpromise> or contact our technical team.

### Terms and conditions

- Guarantee only valid for products bought direct from Abcam or one of our authorized distributors