


PE Anti-Integrin alpha 6 antibody [GoH3] ab95703

11 References **画像数 2**

製品の概要

製品名	PE Anti-Integrin alpha 6 antibody [GoH3]
製品の詳細	PE Rat monoclonal [GoH3] to Integrin alpha 6
由来種	Rat
標識	PE. Ex: 488nm, Em: 575nm
アプリケーション	適用あり: Flow Cyt
種交差性	交差種: Human 交差が予測される動物種: Mouse 
免疫原	Tissue, cells or virus corresponding to Mouse Integrin alpha 6. Mouse mammary tumor cells
ポジティブ・コントロール	Normal Human peripheral blood cells/leukocytes
特記事項	<p>The GoH3 antibody has been reported to have functional activity in blocking the binding of Integrin alpha 6 to laminin.</p> <p>The Life Science industry has been in the grips of a reproducibility crisis for a number of years. Abcam is leading the way in addressing this with our range of recombinant monoclonal antibodies and knockout edited cell lines for gold-standard validation. Please check that this product meets your needs before purchasing.</p> <p>If you have any questions, special requirements or concerns, please send us an inquiry and/or contact our Support team ahead of purchase. Recommended alternatives for this product can be found below, along with publications, customer reviews and Q&As</p>

製品の特性

製品の状態	Liquid
保存方法	Shipped at 4°C. Store at +4°C.
バッファー	pH: 7.20 Preservative: 0.09% Sodium azide
精製度	Protein G purified
一次抗体 備考	The GoH3 antibody has been reported to have functional activity in blocking the binding of Integrin alpha 6 to laminin.
ポリ/モノ	モノクローナル

クローン名	GoH3
アイソタイプ	IgG2a
軽鎖の種類	kappa

アプリケーション

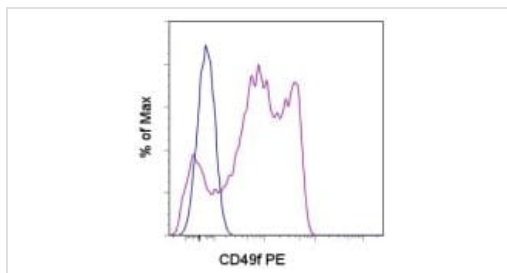
The Abpromise guarantee **Abpromise保証は、**次のテスト済みアプリケーションにおけるab95703の使用に適用されます
アプリケーションノートには、推奨の開始希釈率がありますが、適切な希釈率につきましてはご検討ください。

アプリケーション	Abreviews	特記事項
Flow Cyt		Use 0.06-0.125µg for 10 ⁵⁻⁸ cells. Staining the cell sample in a final volume of 100 µl is recommended.

ターゲット情報

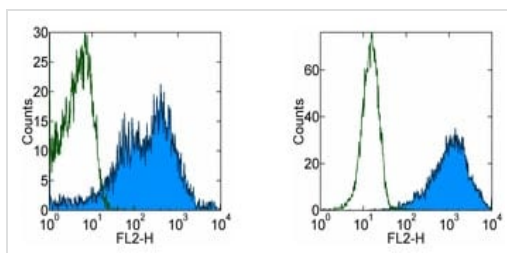
機能	Integrin alpha-6/beta-1 is a receptor for laminin on platelets. Integrin alpha-6/beta-4 is a receptor for laminin in epithelial cells and it plays a critical structural role in the hemidesmosome (By similarity). ITGA6:ITGB4 binds to NRG1 (via EGF domain) and this binding is essential for NRG1-ERBB signaling (PubMed:20682778). ITGA6:ITGB4 binds to IGF1 and this binding is essential for IGF1 signaling (PubMed:22351760).
組織特異性	Integrin alpha-6/beta-4 is predominantly expressed by epithelia. Isoforms containing segment X1 are ubiquitously expressed. Isoforms containing segment X1X2 are expressed in heart, kidney, placenta, colon, duodenum, myoblasts and myotubes, and in a limited number of cell lines; they are always coexpressed with the ubiquitous isoform containing segment X1. In some tissues (e.g. Salivary gland), isoforms containing cytoplasmic segment A and isoforms containing segment B are detected while in others, only isoforms containing one cytoplasmic segment are found (segment A in epidermis and segment B in kidney).
関連疾患	Epidermolysis bullosa letalis, with pyloric atresia
配列類似性	Belongs to the integrin alpha chain family. Contains 7 FG-GAP repeats.
翻訳後修飾	Isoforms containing segment A, but not segment B, are the major targets for PMA-induced phosphorylation. Phosphorylation occurs on 'Ser-1103' of isoform alpha-6X1X2A. Phosphorylation is not required for the induction of integrin alpha-6A/beta-1 high affinity but may reduce the affinity for ligand. In invasive prostate cancer ITGA6 undergoes PLAU-mediated cleavage at residues Arg-634-635-Arg in a time-dependent manner enhancing cell invasion and migration in vitro. Palmitoylation by DHHC3 enhances stability and cell surface expression.
細胞内局在	Cell membrane. Cell membrane.

画像



Flow Cytometry - PE Anti-Integrin alpha 6 antibody
[GoH3] (ab95703)

Flow Cytometry analysis of normal human peripheral blood cells stained with Rat IgG2a kappa Isotype Control Phycoerythrin (blue histogram) or Anti-Integrin alpha 6 antibody [GoH3] (Phycoerythrin) (ab95703) (purple histogram). Cells in the lymphocyte gate were used for analysis.



Flow Cytometry - PE Anti-Integrin alpha 6 antibody
[GoH3] (ab95703)

Flow cytometry staining of normal Human peripheral blood cells with 0.06 μ g of Rat IgG2a Isotype Control PE (open histogram) or 0.06 μ g of ab95703 (filled histogram). Cells in the lymphocyte (left) and granulocyte (right) gates were used for analysis.

Please note: All products are "FOR RESEARCH USE ONLY. NOT FOR USE IN DIAGNOSTIC PROCEDURES"

Our Abpromise to you: Quality guaranteed and expert technical support

- Replacement or refund for products not performing as stated on the datasheet
- Valid for 12 months from date of delivery
- Response to your inquiry within 24 hours
- We provide support in Chinese, English, French, German, Japanese and Spanish
- Extensive multi-media technical resources to help you
- We investigate all quality concerns to ensure our products perform to the highest standards

If the product does not perform as described on this datasheet, we will offer a refund or replacement. For full details of the Abpromise, please visit <https://www.abcam.co.jp/abpromise> or contact our technical team.

Terms and conditions

- Guarantee only valid for products bought direct from Abcam or one of our authorized distributors