

# PE Anti-Integrin alpha 4+beta 7 antibody [DATK32] ab95788

**2 References**   [画像数 1](#)

### 製品の概要

製品名	PE Anti-Integrin alpha 4+beta 7 antibody [DATK32]
製品の詳細	PE Rat monoclonal [DATK32] to Integrin alpha 4+beta 7
由来種	Rat
標識	PE. Ex: 488nm, Em: 575nm
アプリケーション	<b>適用あり:</b> Flow Cyt
種交差性	<b>交差種:</b> Mouse
免疫原	Tissue, cells or virus corresponding to Mouse Integrin alpha 4+beta 7. TK1 cells.
ポジティブ・コントロール	C57BL/6 splenocytes
特記事項	<p>The Life Science industry has been in the grips of a reproducibility crisis for a number of years. Abcam is leading the way in addressing this with our range of recombinant monoclonal antibodies and knockout edited cell lines for gold-standard validation. Please check that this product meets your needs before purchasing.</p> <p>If you have any questions, special requirements or concerns, please send us an inquiry and/or contact our Support team ahead of purchase. Recommended alternatives for this product can be found below, along with publications, customer reviews and Q&amp;As</p>

### 製品の特性

製品の状態	Liquid
保存方法	Shipped at 4°C. Store at +4°C.
バッファー	<p>pH: 7.20</p> <p>Preservative: 0.09% Sodium azide</p> <p>Constituent: PBS</p>
精製度	Protein G purified
ポリ/モノ	モノクローナル
クローン名	DATK32
アイソタイプ	IgG2a
軽鎖の種類	kappa

## アプリケーション

**The Abpromise guarantee**      Abpromise保証は、次のテスト済みアプリケーションにおけるab95788の使用に適用されます  
アプリケーションノートには、推奨の開始希釈率がありますが、適切な希釈率につきましてはご確認ください。

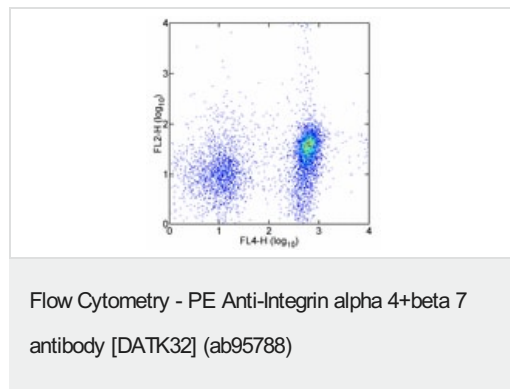
アプリケーション	Abreviews	特記事項
Flow Cyt		Use 1µg for 10 <sup>5</sup> cells. A 100 µl volume is recommended for staining the cell sample.  <b>ab124674</b> Rat monoclonal IgG2a is suitable for use as an

## ターゲット情報

**関連性**      Integrin alpha 4 beta 7, also known as, the lymphocyte Peyer's patch adhesion molecule (LPAM1) is a member of the integrin family of cell surface receptors. It is expressed primarily on mucosal lymphocytes, but is also present on NK cells and eosinophils. The alpha 4 beta 7 heterodimer mediates the binding of lymphocytes to its ligand, mucosal vascular addressin (MAdCAM1) on the high endothelial venules, thereby directing the homing of lymphocytes into Peyer's patches and intestinal lamina propria.

**細胞内局在**      Membrane; Single pass type I membrane protein.

## 画像



ab95788 at 0.5µg dilution staining Integrin alpha 4+beta 7 in C57BL/6 splenocytes by Flow Cytometry.

**Please note:** All products are "FOR RESEARCH USE ONLY. NOT FOR USE IN DIAGNOSTIC PROCEDURES"

## Our Abpromise to you: Quality guaranteed and expert technical support

- Replacement or refund for products not performing as stated on the datasheet
- Valid for 12 months from date of delivery
- Response to your inquiry within 24 hours
- We provide support in Chinese, English, French, German, Japanese and Spanish

- Extensive multi-media technical resources to help you
- We investigate all quality concerns to ensure our products perform to the highest standards

If the product does not perform as described on this datasheet, we will offer a refund or replacement. For full details of the Abpromise, please visit <https://www.abcam.co.jp/abpromise> or contact our technical team.

#### **Terms and conditions**

---

- Guarantee only valid for products bought direct from Abcam or one of our authorized distributors