

# PE Anti-IL-4 antibody [11B11] ab93503

[1 References](#) [画像数 1](#)

### 製品の概要

---

製品名	PE Anti-IL-4 antibody [11B11]
製品の詳細	PE Rat monoclonal [11B11] to IL-4
由来種	Rat
標識	PE. Ex: 488nm, Em: 575nm
アプリケーション	<b>適用あり:</b> Flow Cyt (Intra)
種交差性	<b>交差種:</b> Mouse
免疫原	Full length native protein (purified) corresponding to Mouse IL-4.
ポジティブ・コントロール	Flow Cyt (Intra): Mouse lymphoid cells.
特記事項	<p>The Life Science industry has been in the grips of a reproducibility crisis for a number of years. Abcam is leading the way in addressing this with our range of recombinant monoclonal antibodies and knockout edited cell lines for gold-standard validation. Please check that this product meets your needs before purchasing.</p> <p>If you have any questions, special requirements or concerns, please send us an inquiry and/or contact our Support team ahead of purchase. Recommended alternatives for this product can be found below, along with publications, customer reviews and Q&amp;As</p>

### 製品の特性

---

製品の状態	Liquid
保存方法	Shipped at 4°C. Store at +4°C.
バッファー	pH: 7.20 Preservative: 0.09% Sodium azide Constituents: 0.87% Sodium chloride, PBS
精製度	Affinity purified
ポリ/モノ	モノクローナル
クローン名	11B11
アイソタイプ	IgG1
軽鎖の種類	kappa

## アプリケーション

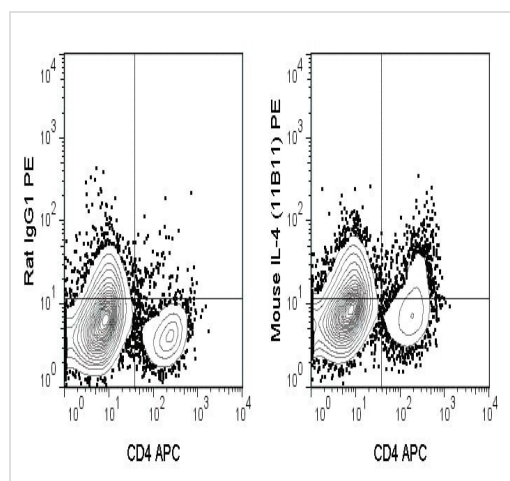
The Abpromise guarantee **Abpromise保証は、次のテスト済みアプリケーションにおけるab93503の使用に適用されます**  
アプリケーションノートには、推奨の開始希釈率がありますが、適切な希釈率につきましてはご確認ください。

アプリケーション	Abreviews	特記事項
Flow Cyt (Intra)		Use at an assay dependent concentration.

## ターゲット情報

<b>機能</b>	Participates in at least several B-cell activation processes as well as of other cell types. It is a costimulator of DNA-synthesis. It induces the expression of class II MHC molecules on resting B-cells. It enhances both secretion and cell surface expression of IgE and IgG1. It also regulates the expression of the low affinity Fc receptor for IgE (CD23) on both lymphocytes and monocytes.
<b>関連疾患</b>	Genetic variations in IL4 may be a cause of susceptibility to ischemic stroke (ISCHSTR) [MIM:601367]; also known as cerebrovascular accident or cerebral infarction. A stroke is an acute neurologic event leading to death of neural tissue of the brain and resulting in loss of motor, sensory and/or cognitive function. Ischemic strokes, resulting from vascular occlusion, is considered to be a highly complex disease consisting of a group of heterogeneous disorders with multiple genetic and environmental risk factors.
<b>配列類似性</b>	Belongs to the IL-4/IL-13 family.
<b>細胞内局在</b>	Secreted.

## 画像



Flow Cytometry (Intracellular) - PE Anti-IL-4 antibody [11B11] (ab93503)

Flow Cytometry (Intracellular) analysis of Mouse lymphoid cells stimulated in the presence of a protein transport inhibitor. Cells were then fixed, permeabilized, stained with APC Anti-Mouse CD4 and intracellularly with 0.125  $\mu$ g ab93503 (right panel) or 0.125  $\mu$ g PE Rat IgG1 (left panel).

**Please note:** All products are "FOR RESEARCH USE ONLY. NOT FOR USE IN DIAGNOSTIC PROCEDURES"

**Our Abpromise to you: Quality guaranteed and expert technical support**

- 
- Replacement or refund for products not performing as stated on the datasheet
  - Valid for 12 months from date of delivery
  - Response to your inquiry within 24 hours
  
  - We provide support in Chinese, English, French, German, Japanese and Spanish
  - Extensive multi-media technical resources to help you
  - We investigate all quality concerns to ensure our products perform to the highest standards

If the product does not perform as described on this datasheet, we will offer a refund or replacement. For full details of the Abpromise, please visit <https://www.abcam.co.jp/abpromise> or contact our technical team.

### **Terms and conditions**

---

- Guarantee only valid for products bought direct from Abcam or one of our authorized distributors