

PE Anti-F4/80 antibody [Cl:A3-1] ab105156

[7 References](#) [画像数 1](#)

製品の概要

製品名	PE Anti-F4/80 antibody [Cl:A3-1]
製品の詳細	PE Rat monoclonal [Cl:A3-1] to F4/80
由来種	Rat
標識	PE. Ex: 488nm, Em: 575nm
特異性	ab105156 recognises the murine F4/80 antigen.
アプリケーション	適用あり: Flow Cyt
種交差性	交差種: Mouse
免疫原	Tissue, cells or virus corresponding to Mouse F4/80. Thioglycollate stimulated peritoneal cavity macrophages from C57/BL mice.
ポジティブ・コントロール	Mouse J774 cells
特記事項	

Clone Cl:A3-1 has been reported to modulate cytokine levels released in response to *Listeria monocytogenes*.

The Life Science industry has been in the grips of a reproducibility crisis for a number of years. Abcam is leading the way in addressing this with our range of recombinant monoclonal antibodies and knockout edited cell lines for gold-standard validation. Please check that this product meets your needs before purchasing.

If you have any questions, special requirements or concerns, please send us an inquiry and/or contact our Support team ahead of purchase. Recommended alternatives for this product can be found below, along with publications, customer reviews and Q&As

製品の特性

製品の状態	Liquid
保存方法	Shipped at 4°C. Store at +4°C.
バッファー	pH: 7.40 Preservative: 0.09% Sodium azide Constituents: 1% BSA, 5% Sucrose, PBS
精製度	Protein A purified
一次抗体 備考	Clone Cl:A3-1 has been reported to modulate cytokine levels released in response to <i>Listeria</i>

	monocytogenes.
ポリ/モノ	モノクローナル
クローン名	Cl:A3-1
ミエローマ	NS1
アイソタイプ	IgG2b

アプリケーション

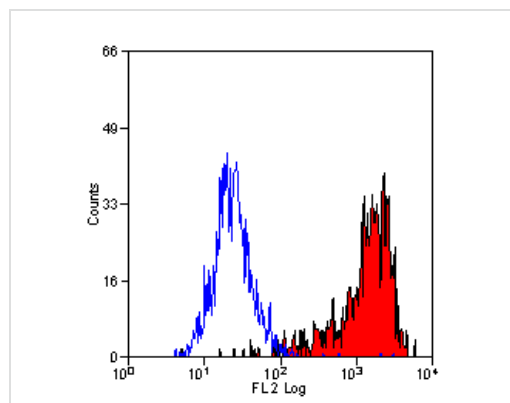
The Abpromise guarantee **Abpromise保証は、**次のテスト済みアプリケーションにおけるab105156の使用に適用されます
アプリケーションノートには、推奨の開始希釈率がありますが、適切な希釈率につきましてはご検討ください。

アプリケーション	Abreviews	特記事項
Flow Cyt		Use 10µl for 10 ⁶ cells. in 100 µl. ab136585 - Rat monoclonal IgG2b, is suitable for use as an isotype control with this antibody.

ターゲット情報

機能	Orphan receptor involved in cell adhesion and probably in cell-cell interactions specifically involving cells of the immune system. May play a role in regulatory T-cells (Treg) development.
組織特異性	Expression is restricted to eosinophils.
配列類似性	Belongs to the G-protein coupled receptor 2 family. Adhesion G-protein coupled receptor (ADGR) subfamily. Contains 6 EGF-like domains. Contains 1 GPS domain.
細胞内局在	Cell membrane.

画像



Flow cytometry staining of mouse J774 cells with ab105156.

Flow Cytometry - PE Anti-F4/80 antibody [Cl:A3-1]
(ab105156)

Please note: All products are "FOR RESEARCH USE ONLY. NOT FOR USE IN DIAGNOSTIC PROCEDURES"

Our Abpromise to you: Quality guaranteed and expert technical support

- Replacement or refund for products not performing as stated on the datasheet
- Valid for 12 months from date of delivery
- Response to your inquiry within 24 hours

- We provide support in Chinese, English, French, German, Japanese and Spanish
- Extensive multi-media technical resources to help you
- We investigate all quality concerns to ensure our products perform to the highest standards

If the product does not perform as described on this datasheet, we will offer a refund or replacement. For full details of the Abpromise, please visit <https://www.abcam.co.jp/abpromise> or contact our technical team.

Terms and conditions

- Guarantee only valid for products bought direct from Abcam or one of our authorized distributors