

PE Anti-CD69 antibody [FN50], prediluted ab135932

画像数 1

製品の概要

製品名	PE Anti-CD69 antibody [FN50], prediluted
製品の詳細	PE Mouse monoclonal [FN50] to CD69, prediluted
由来種	Mouse
標識	PE. Ex: 488nm, Em: 575nm
アプリケーション	適用あり: Flow Cyt
種交差性	交差種: Human
免疫原	Tissue, cells or virus corresponding to Human CD69. Anti- μ -stimulated Human B lymphocytes.
ポジティブ・コントロール	Human whole blood
特記事項	<p>The antibody is conjugated with R-Phycoerythrin (PE) under optimum conditions.</p> <p>The Life Science industry has been in the grips of a reproducibility crisis for a number of years. Abcam is leading the way in addressing this with our range of recombinant monoclonal antibodies and knockout edited cell lines for gold-standard validation. Please check that this product meets your needs before purchasing.</p> <p>If you have any questions, special requirements or concerns, please send us an inquiry and/or contact our Support team ahead of purchase. Recommended alternatives for this product can be found below, along with publications, customer reviews and Q&As</p>

製品の特性

製品の状態	Liquid
保存方法	Shipped at 4°C. Store at +4°C.
バッファー	<p>pH: 7.4</p> <p>Preservative: 0.1% Sodium azide</p> <p>Constituents: 99% PBS, 0.2% BSA</p> <p>BSA is high-grade protease free</p>
精製度	Size exclusion
特記事項 (精製)	The ab135932 conjugate is made from a highly purified antibody (>95% by SDS-PAGE).
ポリ/モノ	モノクローナル
クローン名	FN50

アプリケーション

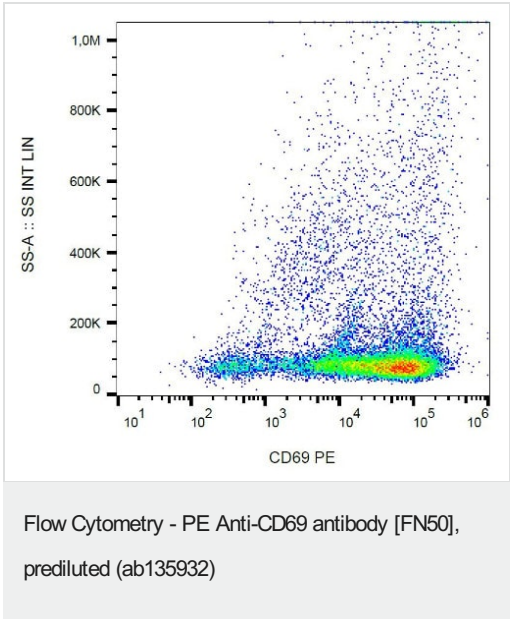
The Abpromise guarantee **Abpromise保証は、**次のテスト済みアプリケーションにおけるab135932の使用に適用されます
アプリケーションノートには、推奨の開始希釈率がありますが、適切な希釈率につきましてはご検討ください。

アプリケーション	Abreviews	特記事項
Flow Cyt		Use 20µl for 10 ⁶ cells. (In 100 µl of whole blood.)

ターゲット情報

機能	Involved in lymphocyte proliferation and functions as a signal transmitting receptor in lymphocytes, natural killer (NK) cells, and platelets.
組織特異性	Expressed on the surface of activated T-cells, B-cells, natural killer cells, neutrophils, eosinophils, epidermal Langerhans cells and platelets.
配列類似性	Contains 1 C-type lectin domain.
発生段階	Earliest inducible cell surface glycoprotein acquired during lymphoid activation.
翻訳後修飾	Constitutive Ser/Thr phosphorylation in both mature thymocytes and activated T-lymphocytes.
細胞内局在	Membrane.

画像



Flow Cytometry analysis of human PHA-activated peripheral blood cells labeling CD69 with Anti-CD69 antibody [FN50], prediluted (Phycoerythrin) (ab135932).

Please note: All products are "FOR RESEARCH USE ONLY. NOT FOR USE IN DIAGNOSTIC PROCEDURES"

Our Abpromise to you: Quality guaranteed and expert technical support

- Replacement or refund for products not performing as stated on the datasheet
- Valid for 12 months from date of delivery
- Response to your inquiry within 24 hours

- We provide support in Chinese, English, French, German, Japanese and Spanish
- Extensive multi-media technical resources to help you
- We investigate all quality concerns to ensure our products perform to the highest standards

If the product does not perform as described on this datasheet, we will offer a refund or replacement. For full details of the Abpromise, please visit <https://www.abcam.co.jp/abpromise> or contact our technical team.

Terms and conditions

- Guarantee only valid for products bought direct from Abcam or one of our authorized distributors