

PE Anti-CD4 antibody [MEM-241] ab18282

★★★★★ [6 Abreviews](#) [4 References](#) [画像数 1](#)

製品の概要

製品名	PE Anti-CD4 antibody [MEM-241]
製品の詳細	PE Mouse monoclonal [MEM-241] to CD4
由来種	Mouse
標識	PE. Ex: 488nm, Em: 575nm
アプリケーション	適用あり: Flow Cyt
種交差性	交差種: Human
免疫原	CD4 Fusion protein (Human).
特記事項	<p>The purified antibody is conjugated with R-Phycoerythrin (R-PE) under optimum conditions. The conjugate is purified by size-exclusion chromatography and adjusted for direct use.</p> <p>The Life Science industry has been in the grips of a reproducibility crisis for a number of years. Abcam is leading the way in addressing this with our range of recombinant monoclonal antibodies and knockout edited cell lines for gold-standard validation. Please check that this product meets your needs before purchasing.</p> <p>If you have any questions, special requirements or concerns, please send us an inquiry and/or contact our Support team ahead of purchase. Recommended alternatives for this product can be found below, along with publications, customer reviews and Q&As</p>

製品の特性

製品の状態	Liquid
保存方法	Shipped at 4°C. Store at +4°C. Do Not Freeze.
バッファー	<p>pH: 7.40</p> <p>Preservative: 0.097% Sodium azide</p> <p>Constituents: PBS, BSA</p>
精製度	Protein G purified
ポリ/モノ	モノクローナル
クローン名	MEM-241
アイソタイプ	IgG1

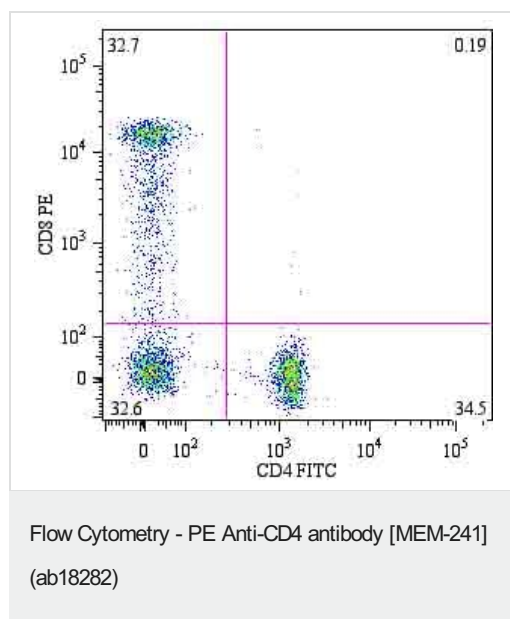
The Abpromise guarantee Abpromise保証は、 次のテスト済みアプリケーションにおけるab18282の使用に適用されます
アプリケーションノートには、推奨の開始希釈率がありますが、適切な希釈率につきましてはご確認ください。

アプリケーション	Abreviews	特記事項
Flow Cyt	★★★★☆ (5)	Use at an assay dependent concentration. Use 5-20µl for 100µl whole human blood cells. ab91357 - Mouse monoclonal IgG1 is suitable for use as an

ターゲット情報

機能	Accessory protein for MHC class-II antigen/T-cell receptor interaction. May regulate T-cell activation. Induces the aggregation of lipid rafts.
配列類似性	Contains 3 Ig-like C2-type (immunoglobulin-like) domains. Contains 1 Ig-like V-type (immunoglobulin-like) domain.
翻訳後修飾	Palmitoylation and association with LCK contribute to the enrichment of CD4 in lipid rafts.
細胞内局在	Cell membrane. Localizes to lipid rafts. Removed from plasma membrane by HIV-1 Nef protein that increases clathrin-dependent endocytosis of this antigen to target it to lysosomal degradation. Cell surface expression is also down-modulated by HIV-1 Envelope polyprotein gp160 that interacts with, and sequesters CD4 in the endoplasmic reticulum.

画像



ab18282 staining CD4 in human T cells by Flow Cytometry .

Please note: All products are "FOR RESEARCH USE ONLY. NOT FOR USE IN DIAGNOSTIC PROCEDURES"

Our Abpromise to you: Quality guaranteed and expert technical support

- Replacement or refund for products not performing as stated on the datasheet
- Valid for 12 months from date of delivery
- Response to your inquiry within 24 hours

- We provide support in Chinese, English, French, German, Japanese and Spanish
- Extensive multi-media technical resources to help you
- We investigate all quality concerns to ensure our products perform to the highest standards

If the product does not perform as described on this datasheet, we will offer a refund or replacement. For full details of the Abpromise, please visit <https://www.abcam.co.jp/abpromise> or contact our technical team.

Terms and conditions

- Guarantee only valid for products bought direct from Abcam or one of our authorized distributors