

PE Anti-CD34 antibody [4H11(APG)], prediluted ab18228

★★★★★ [1 Abreviews](#) [2 References](#) [画像数 1](#)

製品の概要

製品名	PE Anti-CD34 antibody [4H11(APG)], prediluted
製品の詳細	PE Mouse monoclonal [4H11(APG)] to CD34, prediluted
由来種	Mouse
標識	PE. Ex: 488nm, Em: 575nm
特異性	The antibody reacts with Class III epitope on CD34 antibody. It completely blocks binding of Class II antibody QBEnd10 and Class III antibodies BIRMA K3 and 8G12 on KG1a cell line
アプリケーション	適用あり: Flow Cyt
種交差性	交差種: Human
免疫原	Tissue, cells or virus corresponding to Human CD34. Permanent human cell line derived from peripheral leucocytes of a patient suffering from chronic myeloid leukaemia
ポジティブ・コントロール	CML cell line MOLM-7.
特記事項	<p>The Life Science industry has been in the grips of a reproducibility crisis for a number of years. Abcam is leading the way in addressing this with our range of recombinant monoclonal antibodies and knockout edited cell lines for gold-standard validation. Please check that this product meets your needs before purchasing.</p> <p>If you have any questions, special requirements or concerns, please send us an inquiry and/or contact our Support team ahead of purchase. Recommended alternatives for this product can be found below, along with publications, customer reviews and Q&As</p>

製品の特性

製品の状態	Liquid
保存方法	Shipped at 4°C. Store at +4°C.
バッファー	pH: 7.40 Preservative: 0.097% Sodium azide Constituents: PBS, BSA
精製度	Protein G purified
特記事項(精製)	Conjugate purified by size-exclusion chromatography.
ポリ/モノ	モノクローナル
クローン名	4H11(APG)

アプリケーション

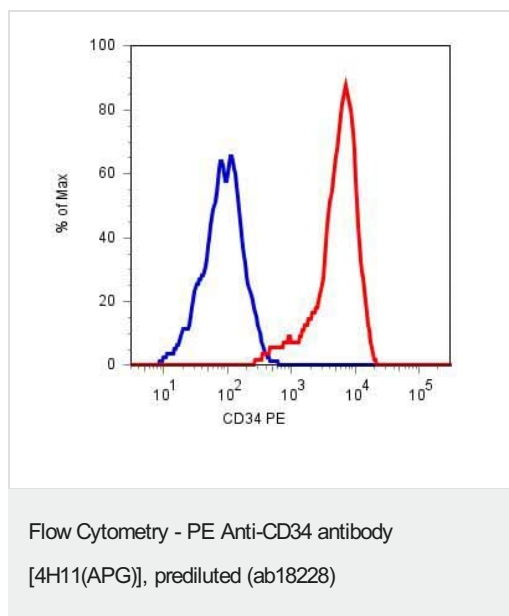
The Abpromise guarantee Abpromise保証は、次のテスト済みアプリケーションにおけるab18228の使用に適用されます
アプリケーションノートには、推奨の開始希釈率がありますが、適切な希釈率につきましてはご確認ください。

アプリケーション	Abreviews	特記事項
Flow Cyt	★★★★★ (1)	Use 20µl for 10 ⁶ cells. A cell suspension volume of 100 µl is recommended. ab01257 Mouse monoclonal IgG1 is suitable for use as an

ターゲット情報

機能	Possible adhesion molecule with a role in early hematopoiesis by mediating the attachment of stem cells to the bone marrow extracellular matrix or directly to stromal cells. Could act as a scaffold for the attachment of lineage specific glycans, allowing stem cells to bind to lectins expressed by stromal cells or other marrow components. Presents carbohydrate ligands to selectins.
組織特異性	Selectively expressed on hematopoietic progenitor cells and the small vessel endothelium of a variety of tissues.
配列類似性	Belongs to the CD34 family.
発生段階	On early hematopoietic progenitor cells.
翻訳後修飾	Highly glycosylated. Phosphorylated on serine residues by PKC.
細胞内局在	Membrane.

画像



ab18228 staining CD34 in KG-1a cell line by Flow Cytometry.
Blue peak represents negative control while red peak shows signal with ab18228.

Please note: All products are "FOR RESEARCH USE ONLY. NOT FOR USE IN DIAGNOSTIC PROCEDURES"

Our Abpromise to you: Quality guaranteed and expert technical support

- Replacement or refund for products not performing as stated on the datasheet
- Valid for 12 months from date of delivery
- Response to your inquiry within 24 hours
- We provide support in Chinese, English, French, German, Japanese and Spanish
- Extensive multi-media technical resources to help you
- We investigate all quality concerns to ensure our products perform to the highest standards

If the product does not perform as described on this datasheet, we will offer a refund or replacement. For full details of the Abpromise, please visit <https://www.abcam.co.jp/abpromise> or contact our technical team.

Terms and conditions

- Guarantee only valid for products bought direct from Abcam or one of our authorized distributors