

PE Anti-CD19 antibody [MB19-1] ab93562

画像数 1

製品の概要

製品名	PE Anti-CD19 antibody [MB19-1]
製品の詳細	PE Mouse monoclonal [MB19-1] to CD19
由来種	Mouse
標識	PE. Ex: 488nm, Em: 575nm
アプリケーション	適用あり: Flow Cyt
種交差性	交差種: Mouse
免疫原	Tissue, cells or virus corresponding to Mouse CD19. CD19+ Mouse pre-B cell line, 300.19
ポジティブ・コントロール	BALB/c splenocytes and Mouse splenocytes
特記事項	<p>The Life Science industry has been in the grips of a reproducibility crisis for a number of years. Abcam is leading the way in addressing this with our range of recombinant monoclonal antibodies and knockout edited cell lines for gold-standard validation. Please check that this product meets your needs before purchasing.</p> <p>If you have any questions, special requirements or concerns, please send us an inquiry and/or contact our Support team ahead of purchase. Recommended alternatives for this product can be found below, along with publications, customer reviews and Q&As</p>

製品の特性

製品の状態	Liquid
保存方法	Shipped at 4°C. Store at +4°C.
バッファー	<p>pH: 7.20</p> <p>Preservative: 0.09% Sodium azide</p> <p>Constituents: 2.9% Sodium chloride, PBS</p>
精製度	Protein G purified
ポリ/モノ	モノクローナル
クローン名	MB19-1
アイソタイプ	IgA
軽鎖の種類	kappa

The Abpromise guarantee **Abpromise保証は、次のテスト済みアプリケーションにおけるab93562の使用に適用されます**
 アプリケーションノートには、推奨の開始希釈率がありますが、適切な希釈率につきましてはご検討ください。

アプリケーション	Abreviews	特記事項
Flow Cyt		

追加情報 Flow Cyt: Use 0.5 µg for 10⁵ to 10⁸ cells in a final volume of 100 µl.

Not yet tested in other applications.
 Optimal dilutions/concentrations should be determined by the end user.

ターゲット情報

機能 Assembles with the antigen receptor of B lymphocytes in order to decrease the threshold for antigen receptor-dependent stimulation.

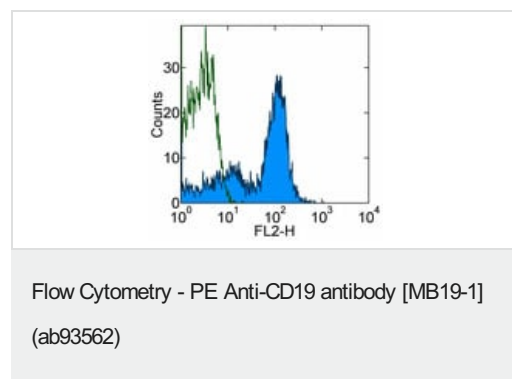
関連疾患 Defects in CD19 are the cause of immunodeficiency common variable type 3 (CVID3) [MIM:613493]; also called antibody deficiency due to CD19 defect. CVID3 is a primary immunodeficiency characterized by antibody deficiency, hypogammaglobulinemia, recurrent bacterial infections and an inability to mount an antibody response to antigen. The defect results from a failure of B-cell differentiation and impaired secretion of immunoglobulins; the numbers of circulating B cells is usually in the normal range, but can be low.

配列類似性 Contains 2 Ig-like C2-type (immunoglobulin-like) domains.

翻訳後修飾 Phosphorylated on serine and threonine upon DNA damage, probably by ATM or ATR.
 Phosphorylated on tyrosine following B-cell activation.

細胞内局在 Membrane.

画像



Staining of BALB/c splenocytes with staining buffer
 (autofluorescence) (open histogram) or ab93562 (colored
 histogram). Cells in the lymphocyte gate were used for analysis.

Please note: All products are "FOR RESEARCH USE ONLY. NOT FOR USE IN DIAGNOSTIC PROCEDURES"

Our Abpromise to you: Quality guaranteed and expert technical support

- Replacement or refund for products not performing as stated on the datasheet

- Valid for 12 months from date of delivery
- Response to your inquiry within 24 hours
- We provide support in Chinese, English, French, German, Japanese and Spanish
- Extensive multi-media technical resources to help you
- We investigate all quality concerns to ensure our products perform to the highest standards

If the product does not perform as described on this datasheet, we will offer a refund or replacement. For full details of the Abpromise, please visit <https://www.abcam.co.jp/abpromise> or contact our technical team.

Terms and conditions

- Guarantee only valid for products bought direct from Abcam or one of our authorized distributors