


PE Anti-CD177 antibody [MEM-166], prediluted ab69777

[1 References](#) [画像数 2](#)

製品の概要

製品名	PE Anti-CD177 antibody [MEM-166], prediluted
製品の詳細	PE Mouse monoclonal [MEM-166] to CD177, prediluted
由来種	Mouse
標識	PE. Ex: 488nm, Em: 575nm
アプリケーション	適用あり: Flow Cyt
種交差性	交差種: Human 交差が予測される動物種: Non human primates 
免疫原	Tissue, cells or virus corresponding to Human CD177. Human granulocytes
特記事項	<p>The Life Science industry has been in the grips of a reproducibility crisis for a number of years. Abcam is leading the way in addressing this with our range of recombinant monoclonal antibodies and knockout edited cell lines for gold-standard validation. Please check that this product meets your needs before purchasing.</p> <p>If you have any questions, special requirements or concerns, please send us an inquiry and/or contact our Support team ahead of purchase. Recommended alternatives for this product can be found below, along with publications, customer reviews and Q&As</p>

製品の特性

製品の状態	Liquid
保存方法	Shipped at 4°C. Store at +4°C.
バッファー	pH: 7.4 Preservative: 0.097% Sodium azide Constituents: 0.2% BSA, PBS
精製度	Size exclusion
特記事項(精製)	The purified antibody is conjugated with R-Phycoerythrin (PE) under optimum conditions.
ポリ/モノ	モノクローナル
クローン名	MEM-166
アイソタイプ	IgG1

アプリケーション

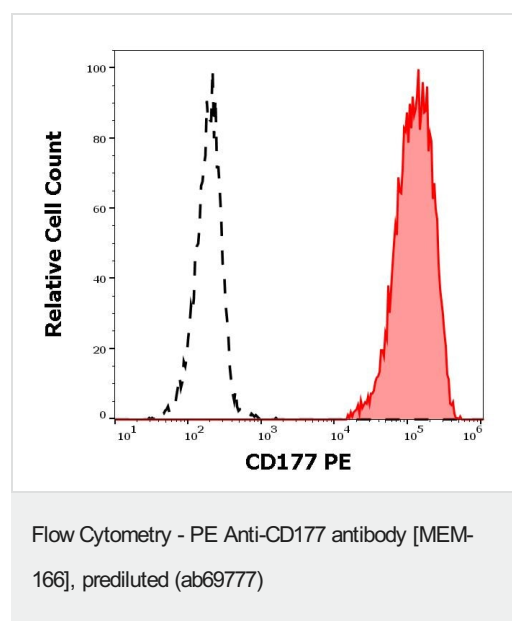
The Abpromise guarantee Abpromise保証は、次のテスト済みアプリケーションにおけるab69777の使用に適用されます
アプリケーションノートには、推奨の開始希釈率がありますが、適切な希釈率につきましてはご確認ください。

アプリケーション	Abreviews	特記事項
Flow Cyt		Use at an assay dependent concentration. Use 20 µl per 100 µl of whole blood or 10 ⁶ cells in a suspension

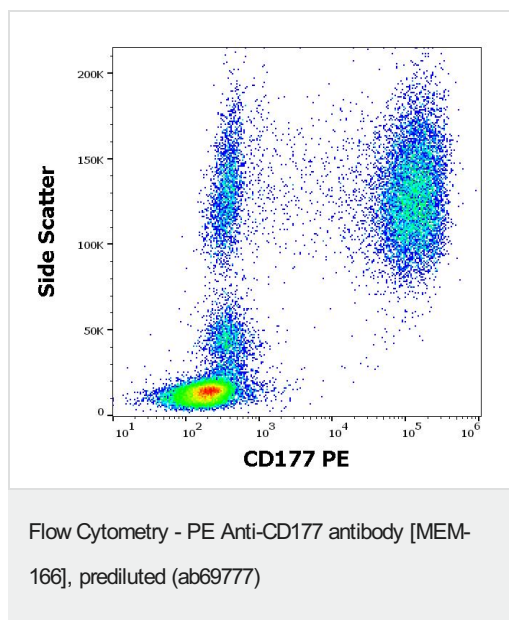
ターゲット情報

組織特異性	Highly expressed in normal bone marrow and weakly expressed in fetal liver. Expressed on neutrophils. Expressed in granulocytes of patients with polycythemia vera (PV) and with essential thrombocythemia (ET).
配列類似性	Contains 2 UPAR/Ly6 domains.
翻訳後修飾	N-glycosylated. A soluble form may also be produced by proteolytic cleavage at the cell surface (shedding).
細胞内局在	Cell membrane.

画像



Separation of human CD177 positive neutrophil granulocytes (red-filled) from lymphocytes (black-dashed) in flow cytometry analysis (surface staining) of human peripheral whole blood stained using ab69777 (20 µl reagent / 100 µl of peripheral whole blood).



Flow cytometry surface staining pattern of human peripheral whole blood stained using ab69777 (20 µl reagent / 100 µl of peripheral whole blood).

Please note: All products are "FOR RESEARCH USE ONLY. NOT FOR USE IN DIAGNOSTIC PROCEDURES"

Our Abpromise to you: Quality guaranteed and expert technical support

- Replacement or refund for products not performing as stated on the datasheet
- Valid for 12 months from date of delivery
- Response to your inquiry within 24 hours
- We provide support in Chinese, English, French, German, Japanese and Spanish
- Extensive multi-media technical resources to help you
- We investigate all quality concerns to ensure our products perform to the highest standards

If the product does not perform as described on this datasheet, we will offer a refund or replacement. For full details of the Abpromise, please visit <https://www.abcam.co.jp/abpromise> or contact our technical team.

Terms and conditions

- Guarantee only valid for products bought direct from Abcam or one of our authorized distributors