

# PE Anti-CD16 antibody [3G8] ab117117

**1 References**   [画像数 3](#)

### 製品の概要

製品名	PE Anti-CD16 antibody [3G8]
製品の詳細	PE Mouse monoclonal [3G8] to CD16
由来種	Mouse
標識	PE. Ex: 488nm, Em: 575nm
アプリケーション	<b>適用あり:</b> Flow Cyt
種交差性	<b>交差種:</b> Human
免疫原	Tissue, cells or virus corresponding to Human CD16. Human neutrophils.
ポジティブ・コントロール	Flow Cyt: Lymphocytes from human blood.
特記事項	<p>The Life Science industry has been in the grips of a reproducibility crisis for a number of years. Abcam is leading the way in addressing this with our range of recombinant monoclonal antibodies and knockout edited cell lines for gold-standard validation. Please check that this product meets your needs before purchasing.</p> <p>If you have any questions, special requirements or concerns, please send us an inquiry and/or contact our Support team ahead of purchase. Recommended alternatives for this product can be found below, along with publications, customer reviews and Q&amp;As</p>

### 製品の特性

製品の状態	Liquid
保存方法	Shipped at 4°C. Store at +4°C.
バッファー	<p>pH: 7.4</p> <p>Preservative: 0.1% Sodium azide</p> <p>Constituents: 99% PBS, 0.2% BSA</p>
精製度	Size exclusion
ポリ/モノ	モノクローナル
クローン名	3G8
アイソタイプ	IgG1

### アプリケーション

## The Abpromise guarantee

**Abpromise保証は、**次のテスト済みアプリケーションにおけるab117117の使用に適用されます

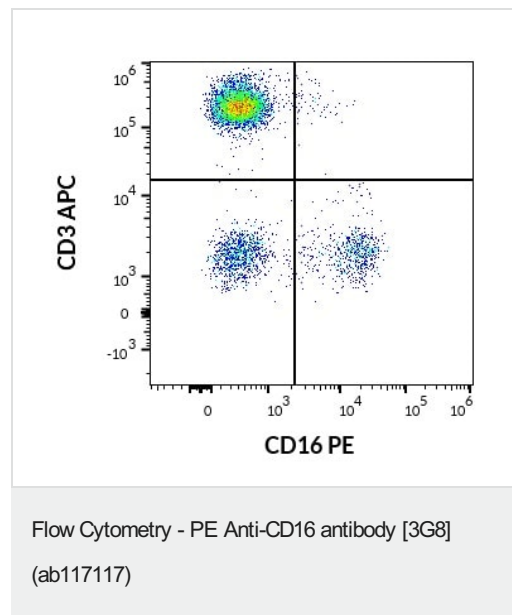
アプリケーションノートには、推奨の開始希釈率がありますが、適切な希釈率につきましてはご検討ください。

アプリケーション	Abreviews	特記事項
Flow Cyt		Use at an assay dependent concentration. 20 µl reagent / 100 µl of whole blood or 10 <sup>6</sup> cells in a suspension.

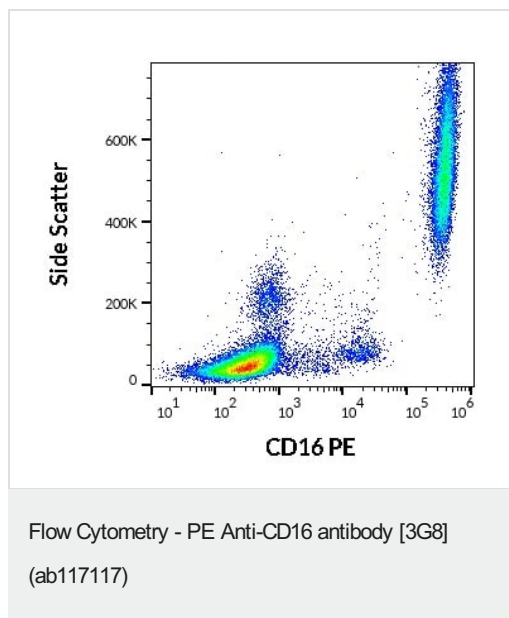
## ターゲット情報

機能	Receptor for the Fc region of IgG. Binds complexed or aggregated IgG and also monomeric IgG. Mediates antibody-dependent cellular cytotoxicity (ADCC) and other antibody-dependent responses, such as phagocytosis.
組織特異性	Expressed on natural killer cells, macrophages, subpopulation of T-cells, immature thymocytes and placental trophoblasts.
配列類似性	Contains 2 Ig-like C2-type (immunoglobulin-like) domains.
翻訳後修飾	Glycosylated. Contains high mannose- and complex-type oligosaccharides. The soluble form is produced by a proteolytic cleavage.
細胞内局在	Cell membrane. Secreted. Exists also as a soluble receptor.

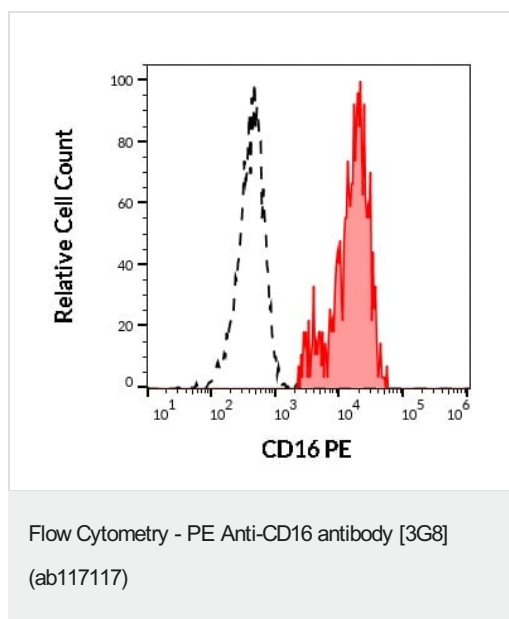
## 画像



Flow cytometry multicolor surface staining pattern of human lymphocytes using ab117117 at (20 µL reagent/100 µL of peripheral whole blood) and anti-human CD3 APC antibody at (10 µL reagent/100 µL of peripheral whole blood).



Flow cytometry surface staining pattern of human peripheral whole blood stained using ab117117 at (20 µL reagent/100 µL of peripheral whole blood).



Separation of human CD3 negative CD16 positive NK cells (red-filled) from human CD3 positive CD16 negative lymphocytes (black-dashed) in flow cytometry analysis (surface staining) of human peripheral whole blood stained using ab117117 at (20 µL reagent/100 µL of peripheral whole blood).

**Please note:** All products are "FOR RESEARCH USE ONLY. NOT FOR USE IN DIAGNOSTIC PROCEDURES"

#### Our Abpromise to you: Quality guaranteed and expert technical support

- Replacement or refund for products not performing as stated on the datasheet
- Valid for 12 months from date of delivery
- Response to your inquiry within 24 hours

- We provide support in Chinese, English, French, German, Japanese and Spanish
- Extensive multi-media technical resources to help you
- We investigate all quality concerns to ensure our products perform to the highest standards

If the product does not perform as described on this datasheet, we will offer a refund or replacement. For full details of the Abpromise, please visit <https://www.abcam.co.jp/abpromise> or contact our technical team.

#### **Terms and conditions**

---

- Guarantee only valid for products bought direct from Abcam or one of our authorized distributors