


PE Anti-alpha smooth muscle Actin (acetyl E3) + ACTG2 (acetyl E3) antibody [E184] ab209435

リコンビナント **RabMAb**

★★★★★ [1 Abreviews](#) [3 References](#) [画像数 3](#)

製品の概要

製品名	PE Anti-alpha smooth muscle Actin (acetyl E3) + ACTG2 (acetyl E3) antibody [E184]
製品の詳細	PE Rabbit monoclonal [E184] to alpha smooth muscle Actin (acetyl E3) + ACTG2 (acetyl E3)
由来種	Rabbit
標識	PE. Ex: 488nm, Em: 575nm
特異性	The antibody has been shown to detect P62736-ACTA (gene <i>ACTA2</i>): (Ac)-EEEDSTALVC and P63267-ACTH (gene <i>ACTG2</i>): (Ac)-EEETALVC in indirect ELISA.
アプリケーション	適用あり: ICC/IF, Flow Cyt (Intra)
種交差性	交差種: Rat, Human 交差が予測される動物種: Mouse 
免疫原	Synthetic peptide within Human alpha smooth muscle Actin (N terminal). The exact sequence is proprietary.
ポジティブ・コントロール	Flow Cyt (intra): SV40LT-SMC cells ICC/IF: SV40LT-SMC cells
特記事項	Our RabMAb [®] technology is a patented hybridoma-based technology for making rabbit monoclonal antibodies. For details on our patents, please refer to RabMAb[®] patents .

製品の特性

製品の状態	Liquid
保存方法	Shipped at 4°C. Upon delivery aliquot. Store at +4°C. Do Not Freeze. Store In the Dark.
バッファー	pH: 7.4 Preservative: 0.02% Sodium azide Constituents: 1% BSA, PBS
精製度	Protein A purified
ポリ/モノ	モノクローナル
クローン名	E184
アイソタイプ	IgG

アプリケーション

The Abpromise guarantee

Abpromise保証は、次のテスト済みアプリケーションにおけるab209435の使用に適用されます

アプリケーションノートには、推奨の開始希釈率がありますが、適切な希釈率につきましてはご検討ください。

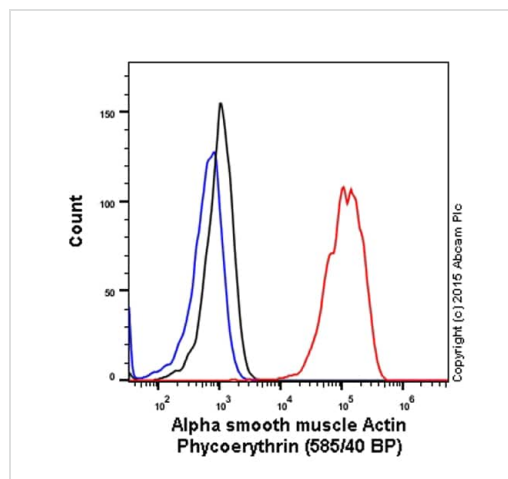
アプリケーション	Abreviews	特記事項
ICC/IF		1/500. This product gave a positive signal in SV40LT cells fixed with 4% formaldehyde (10 min)
Flow Cyt (Intra)		1/5000. ab209478 - Rabbit monoclonal IgG (Phycoerythrin), is suitable for use as an isotype control with this antibody.

ターゲット情報

細胞内局在

alpha smooth muscle Actin: Cytoplasm > cytoskeleton. ACTG2: Cytoplasm > cytoskeleton.

画像

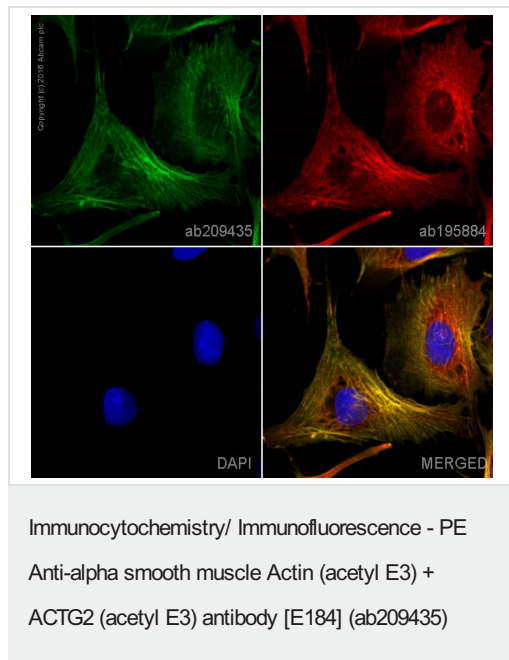


Overlay histogram showing SV40LT-SMC cells stained with ab209435 (red line). The cells were fixed with 80% methanol (5 min) and then permeabilized with 0.1% PBS-Triton X-100 for 15 min. The cells were then incubated in 1x PBS / 10% normal goat serum to block non-specific protein-protein interactions followed by the antibody (ab209435, 1/5000 dilution) for 30 min at 22°C.

Isotype control antibody (black line) was rabbit IgG (monoclonal) Phycoerythrin (**ab209478**) used at the same concentration and conditions as the primary antibody. Unlabelled sample (blue line) was also used as a control.

Acquisition of >5,000 events were collected using a 20 mW Solid State Blue Laser (488nm) and 585/40 bandpass filter.

This antibody gave a positive signal in SV40LT-SMC cells fixed with 4% formaldehyde (10 min)/permeabilized with 0.1% PBS-Triton X-100 for 15 min used under the same conditions.



ab209435 staining alpha smooth muscle Actin in SV40LT-SMC cells. The cells were fixed with 4% formaldehyde (10 min), permeabilized with 0.1% Triton X-100 for 5 minutes and then blocked with 1% BSA/10% normal goat serum/0.3M glycine in 0.1% PBS-Tween for 1h. The cells were then incubated overnight at +4°C with ab209435 at 1/500 dilution (Pseudocolored in green) and **ab195884**, Rat monoclonal to Tubulin (Alexa Fluor® 647), at 1/250 dilution (shown in red). Nuclear DNA was labelled with DAPI (shown in blue).

Image was taken with a confocal microscope (Leica-Microsystems, TCS SP8).

Why choose a recombinant antibody?

Research with confidence
Consistent and reproducible results

Long-term and scalable supply
Recombinant technology

Success from the first experiment
Confirmed specificity

Ethical standards compliant
Animal-free production

PE Anti-alpha smooth muscle Actin (acetyl E3) +
ACTG2 (acetyl E3) antibody [E184] (ab209435)

Please note: All products are "FOR RESEARCH USE ONLY. NOT FOR USE IN DIAGNOSTIC PROCEDURES"

Our Abpromise to you: Quality guaranteed and expert technical support

- Replacement or refund for products not performing as stated on the datasheet
- Valid for 12 months from date of delivery

- Response to your inquiry within 24 hours
- We provide support in Chinese, English, French, German, Japanese and Spanish
- Extensive multi-media technical resources to help you
- We investigate all quality concerns to ensure our products perform to the highest standards

If the product does not perform as described on this datasheet, we will offer a refund or replacement. For full details of the Abpromise, please visit <https://www.abcam.co.jp/abpromise> or contact our technical team.

Terms and conditions

- Guarantee only valid for products bought direct from Abcam or one of our authorized distributors