


Anti-PDZ-RhoGEF antibody ab110059

[3 References](#) [画像数 1](#)

製品の概要

製品名	Anti-PDZ-RhoGEF antibody
製品の詳細	Rabbit polyclonal to PDZ-RhoGEF
由来種	Rabbit
アプリケーション	適用あり: WB
種交差性	交差種: Human 交差が予測される動物種: Mouse, Rat 
免疫原	Synthetic peptide corresponding to Human PDZ-RhoGEF (N terminal).
ポジティブ・コントロール	A549 and COLO cell extracts.
特記事項	<p>The Life Science industry has been in the grips of a reproducibility crisis for a number of years. Abcam is leading the way in addressing this with our range of recombinant monoclonal antibodies and knockout edited cell lines for gold-standard validation. Please check that this product meets your needs before purchasing.</p> <p>If you have any questions, special requirements or concerns, please send us an inquiry and/or contact our Support team ahead of purchase. Recommended alternatives for this product can be found below, along with publications, customer reviews and Q&As</p>

製品の特性

製品の状態	Liquid
保存方法	Shipped at 4°C. Store at -20°C. Stable for 12 months at -20°C.
バッファー	pH: 7.40 Preservative: 0.02% Sodium azide Constituents: PBS, 0.88% Sodium chloride, 50% Glycerol (glycerin, glycerine)
精製度	PBS without Mg ²⁺ and Ca ²⁺ Immunogen affinity purified
特記事項 (精製)	ab110059 was affinity-purified from rabbit antiserum by affinity-chromatography using epitope-specific immunogen.
ポリ/モノ	ポリクローナル
アイソタイプ	IgG

アプリケーション

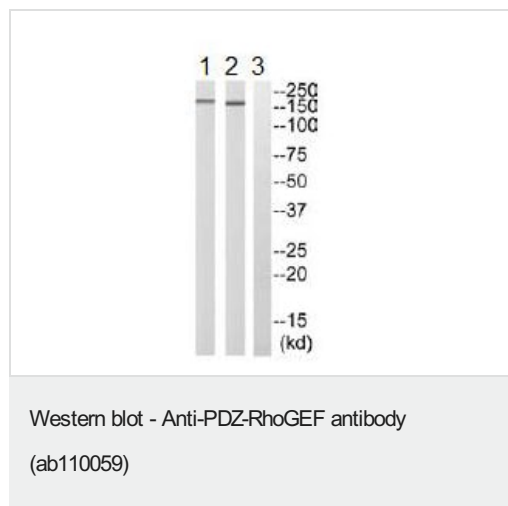
The Abpromise guarantee Abpromise保証は、次のテスト済みアプリケーションにおけるab110059の使用に適用されず
アプリケーションノートには、推奨の開始希釈率がありますが、適切な希釈率につきましてはご検討ください。

アプリケーション	Abreviews	特記事項
WB		1/500 - 1/1000. Predicted molecular weight: 168 kDa.

ターゲット情報

機能	May play a role in the regulation of RhoA GTPase by guanine nucleotide-binding alpha-12 (GNA12) and alpha-13 (GNA13). Acts as guanine nucleotide exchange factor (GEF) for RhoA GTPase and may act as GTPase-activating protein (GAP) for GNA12 and GNA13.
組織特異性	Ubiquitously expressed.
配列類似性	Contains 1 DH (DBL-homology) domain. Contains 1 PDZ (DHR) domain. Contains 1 PH domain. Contains 1 RGSL (RGS-like) domain.
ドメイン	The poly-Pro region is essential for plasma membrane localization upon stimulation.
細胞内局在	Cytoplasm. Membrane. Translocated to the membrane upon stimulation.

画像



All lanes : Anti-PDZ-RhoGEF antibody (ab110059) at 1/500 dilution

Lane 1 : A549 cell extract

Lane 2 : COLO cell extract

Lane 3 : COLO cell extract with immunizing peptide

Lysates/proteins at 30 µg per lane.

Predicted band size: 168 kDa

Please note: All products are "FOR RESEARCH USE ONLY. NOT FOR USE IN DIAGNOSTIC PROCEDURES"

Our Abpromise to you: Quality guaranteed and expert technical support

- Replacement or refund for products not performing as stated on the datasheet
- Valid for 12 months from date of delivery
- Response to your inquiry within 24 hours

- We provide support in Chinese, English, French, German, Japanese and Spanish
- Extensive multi-media technical resources to help you
- We investigate all quality concerns to ensure our products perform to the highest standards

If the product does not perform as described on this datasheet, we will offer a refund or replacement. For full details of the Abpromise, please visit <https://www.abcam.co.jp/abpromise> or contact our technical team.

Terms and conditions

- Guarantee only valid for products bought direct from Abcam or one of our authorized distributors