

Anti-PDX1 antibody [OT12A12] ab84987

5 References [画像数 5](#)

製品の概要

製品名	Anti-PDX1 antibody [OT12A12]
製品の詳細	Mouse monoclonal [OT12A12] to PDX1
由来種	Mouse
アプリケーション	適用あり: WB, IHC-P, ICC/IF
種交差性	交差種: Human
免疫原	Recombinant full length protein, corresponding to amino acids 1-283 of human PDX1 expressed in <i>E. coli</i> .
ポジティブ・コントロール	IHC-P: pancreas; carcinoma of pancreas WB: HEK293T cells transfected with PDX1; lysate from 293T cells transfected with PDX1 ICC/IF: HeLa cells transiently transfected by PDX1; HeLa cells
特記事項	The clone number has been updated from 2A12 to OT12A12, both clone numbers name the same clone.

The Life Science industry has been in the grips of a reproducibility crisis for a number of years. Abcam is leading the way in addressing this with our range of recombinant monoclonal antibodies and knockout edited cell lines for gold-standard validation. Please check that this product meets your needs before purchasing.

If you have any questions, special requirements or concerns, please send us an inquiry and/or contact our Support team ahead of purchase. Recommended alternatives for this product can be found below, along with publications, customer reviews and Q&As

製品の特性

製品の状態	Liquid
保存方法	Shipped at 4°C. Upon delivery aliquot and store at -20°C. Avoid freeze / thaw cycles.
バッファー	pH: 7.30 Preservative: 0.02% Sodium azide Constituents: 1% BSA, 50% Glycerol, PBS
精製度	Immunogen affinity purified
特記事項 (精製)	Purified from TCS
ポリ/モノ	モノクローナル

クローン名	OT12A12
アイソタイプ	IgG1

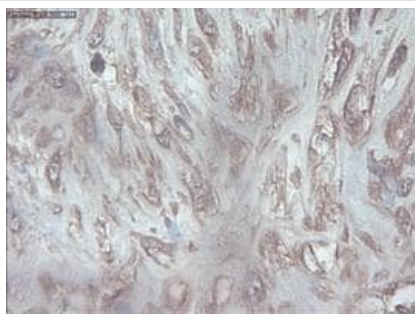
アプリケーション

The Abpromise guarantee **Abpromise保証は、** 次のテスト済みアプリケーションにおけるab84987の使用に適用されます
アプリケーションノートには、推奨の開始希釈率がありますが、適切な希釈率につきましてはご検討ください。

アプリケーション	Abreviews	特記事項
WB		1/20000. Predicted molecular weight: 31 kDa.
IHC-P		Use at an assay dependent concentration.
ICC/IF		Use at an assay dependent concentration.

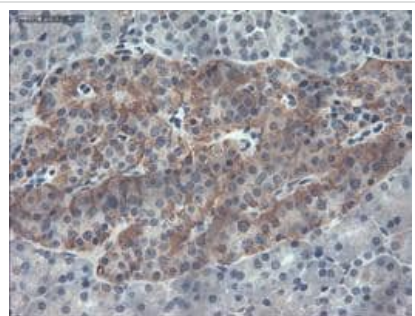
ターゲット情報

機能	Activates insulin, somatostatin, glucokinase, islet amyloid polypeptide and glucose transporter type 2 gene transcription. Particularly involved in glucose-dependent regulation of insulin gene transcription. Binds preferentially the DNA motif 5'-[CT]TAAT[TG]-3'. During development, specifies the early pancreatic epithelium, permitting its proliferation, branching and subsequent differentiation. At adult stage, required for maintaining the hormone-producing phenotype of the beta-cell.
組織特異性	Duodenum and pancreas (Langerhans islet beta cells and small subsets of endocrine non-beta-cells, at low levels in acinar cells).
関連疾患	Defects in PDX1 are a cause of pancreatic agenesis (PAC) [MIM:260370]. This autosomal recessive disorder is characterized by absence or hypoplasia of pancreas, leading to early-onset insulin-dependent diabetes mellitus. This was found in a frameshift mutation that produces a truncated protein and results in a second initiation that produces a second protein that act as a dominant negative mutant. Defects in PDX1 are a cause of non-insulin-dependent diabetes mellitus (NIDDM) [MIM:125853]; also known as diabetes mellitus type 2. NIDDM is characterized by an autosomal dominant mode of inheritance, onset during adulthood and insulin resistance. Defects in PDX1 are the cause of maturity-onset diabetes of the young type 4 (MODY4) [MIM:606392]; also symbolized MODY-4. MODY is a form of diabetes that is characterized by an autosomal dominant mode of inheritance, onset in childhood or early adulthood (usually before 25 years of age), a primary defect in insulin secretion and frequent insulin-independence at the beginning of the disease.
配列類似性	Belongs to the Antp homeobox family. IPF1/XI Hbox-8 subfamily. Contains 1 homeobox DNA-binding domain.
ドメイン	The Antp-type hexapeptide mediates heterodimerization with PBX on a regulatory element of the somatostatin promoter. The homeodomain, which contains the nuclear localization signal, not only mediates DNA-binding, but also acts as a protein-protein interaction domain for TCF3(E47), NEUROD1 and HMG-I(Y).
翻訳後修飾	Phosphorylated by the SAPK2 pathway at high intracellular glucose concentration.
細胞内局在	Nucleus.



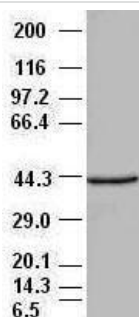
Immunohistochemistry (Formalin/PFA-fixed paraffin-embedded sections) - Anti-PDX1 antibody [OTI2A12] (ab84987)

ab84987, staining PDX1 in paraffin embedded human pancreas carcinoma tissue by Immunohistochemistry.



Immunohistochemistry (Formalin/PFA-fixed paraffin-embedded sections) - Anti-PDX1 antibody [OTI2A12] (ab84987)

ab84987, staining PDX1 in paraffin embedded human pancreas by Immunohistochemistry.

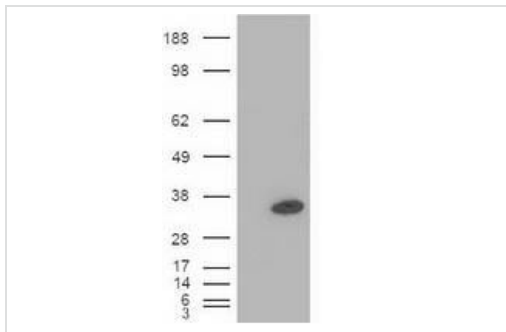


Western blot - Anti-PDX1 antibody [OTI2A12] (ab84987)

Anti-PDX1 antibody [OTI2A12] (ab84987) at 1/20000 dilution + lysate from HEK293T cells transfected with human PDX1 expression vector

Predicted band size: 31 kDa

HEK293T cell lysates were generated from transient transfection of the cDNA clone (RC200033)



Western blot - Anti-PDX1 antibody [OTI2A12] (ab84987)

All lanes : Anti-PDX1 antibody [OTI2A12] (ab84987)

Lane 1 : lysate from HEK293T cells transfected with an empty expression vector

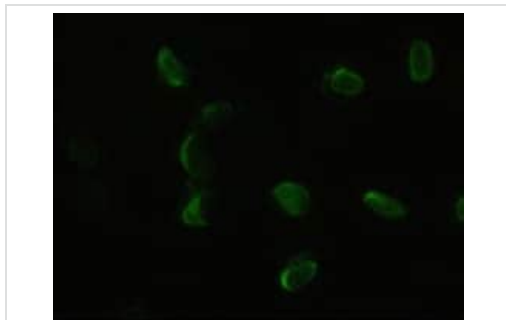
Lane 2 : lysate from HEK293T cells transfected with a human PDX1 expression vector

Lysates/proteins at 5 µg per lane.

Predicted band size: 31 kDa

Observed band size: 31 kDa

HEK293T cell lysates were generated from transient transfection of the cDNA clone (RC200033)



Immunocytochemistry/ Immunofluorescence - Anti-PDX1 antibody [OTI2A12] (ab84987)

ab84987, staining PDX1 by Immunofluorescence in HeLa cells transiently transfected with a vector expressing PDX1.

Please note: All products are "FOR RESEARCH USE ONLY. NOT FOR USE IN DIAGNOSTIC PROCEDURES"

Our Abpromise to you: Quality guaranteed and expert technical support

- Replacement or refund for products not performing as stated on the datasheet
- Valid for 12 months from date of delivery
- Response to your inquiry within 24 hours
- We provide support in Chinese, English, French, German, Japanese and Spanish
- Extensive multi-media technical resources to help you
- We investigate all quality concerns to ensure our products perform to the highest standards

If the product does not perform as described on this datasheet, we will offer a refund or replacement. For full details of the Abpromise, please visit <https://www.abcam.co.jp/abpromise> or contact our technical team.

Terms and conditions

- Guarantee only valid for products bought direct from Abcam or one of our authorized distributors