

### Anti-PDX1 antibody ab47267

★★★★☆ **16 Abreviews** **97 References** **画像数 4**

#### 製品の概要

製品名	Anti-PDX1 antibody
製品の詳細	Rabbit polyclonal to PDX1
由来種	Rabbit
アプリケーション	<b>適用あり:</b> ICC/IF, IHC-P
種交差性	<b>交差種:</b> Human
免疫原	Recombinant fragment corresponding to Mouse PDX1 (N terminal). Database link: <b><u>P52946</u></b>
特記事項	<p>The Life Science industry has been in the grips of a reproducibility crisis for a number of years. Abcam is leading the way in addressing this with our range of recombinant monoclonal antibodies and knockout edited cell lines for gold-standard validation. Please check that this product meets your needs before purchasing.</p> <p>If you have any questions, special requirements or concerns, please send us an inquiry and/or contact our Support team ahead of purchase. Recommended alternatives for this product can be found below, along with publications, customer reviews and Q&amp;As</p>

#### 製品の特性

製品の状態	Liquid
保存方法	Shipped at 4°C. Store at +4°C short term (1-2 weeks). Upon delivery aliquot. Store at -20°C or -80°C. Avoid freeze / thaw cycle.
精製度	Whole antiserum
ポリ/モノ	ポリクローナル
アイソタイプ	IgG

#### アプリケーション

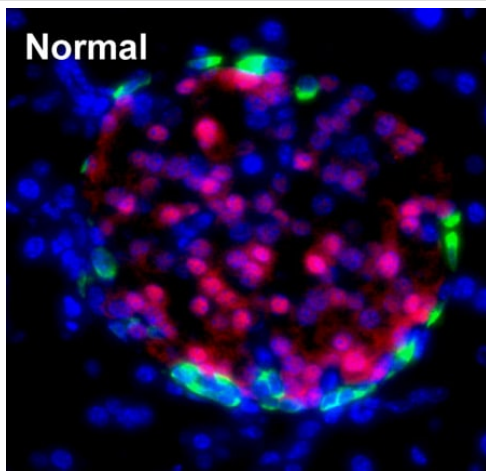
**The Abpromise guarantee**      **Abpromise保証は、**次のテスト済みアプリケーションにおけるab47267の使用に適用されます  
アプリケーションノートには、推奨の開始希釈率がありますが、適切な希釈率につきましてはご検討ください。

アプリケーション	Abreviews	特記事項
ICC/IF	★★★★★ (3)	1/2000. See ICC-specific protocol in protocol tab.
IHC-P	★★★★★ (6)	Use at an assay dependent concentration. See IHC-specific protocol in protocol tab.

## ターゲット情報

機能	Activates insulin, somatostatin, glucokinase, islet amyloid polypeptide and glucose transporter type 2 gene transcription. Particularly involved in glucose-dependent regulation of insulin gene transcription. Binds preferentially the DNA motif 5'-[CT]TAAT[ TG]-3'. During development, specifies the early pancreatic epithelium, permitting its proliferation, branching and subsequent differentiation. At adult stage, required for maintaining the hormone-producing phenotype of the beta-cell.
組織特異性	Duodenum and pancreas (Langerhans islet beta cells and small subsets of endocrine non-beta-cells, at low levels in acinar cells).
関連疾患	<p>Defects in PDX1 are a cause of pancreatic agenesis (PAC) [MIM:260370]. This autosomal recessive disorder is characterized by absence or hypoplasia of pancreas, leading to early-onset insulin-dependent diabetes mellitus. This was found in a frameshift mutation that produces a truncated protein and results in a second initiation that produces a second protein that act as a dominant negative mutant.</p> <p>Defects in PDX1 are a cause of non-insulin-dependent diabetes mellitus (NIDDM) [MIM:125853]; also known as diabetes mellitus type 2. NIDDM is characterized by an autosomal dominant mode of inheritance, onset during adulthood and insulin resistance.</p> <p>Defects in PDX1 are the cause of maturity-onset diabetes of the young type 4 (MODY4) [MIM:606392]; also symbolized MODY-4. MODY is a form of diabetes that is characterized by an autosomal dominant mode of inheritance, onset in childhood or early adulthood (usually before 25 years of age), a primary defect in insulin secretion and frequent insulin-independence at the beginning of the disease.</p>
配列類似性	<p>Belongs to the Antp homeobox family. IPF1/XI Hbox-8 subfamily.</p> <p>Contains 1 homeobox DNA-binding domain.</p>
ドメイン	<p>The Antp-type hexapeptide mediates heterodimerization with PBX on a regulatory element of the somatostatin promoter.</p> <p>The homeodomain, which contains the nuclear localization signal, not only mediates DNA-binding, but also acts as a protein-protein interaction domain for TCF3(E47), NEUROD1 and HMG-I(Y).</p>
翻訳後修飾	Phosphorylated by the SAPK2 pathway at high intracellular glucose concentration.
細胞内局在	Nucleus.

## 画像

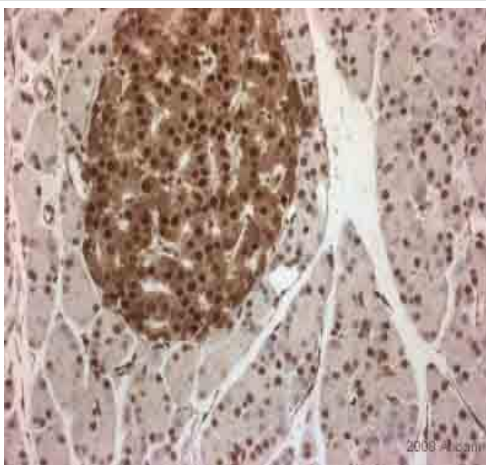


Immunohistochemistry (Formalin/PFA-fixed paraffin-embedded sections) - Anti-PDX1 antibody (ab47267)

Image from Zhang Y et al., PLoS One. 2012;7(5):e36675. Epub 2012 May 7. Fig 7.; doi:10.1371/journal.pone.0036675; May 7, 2012, PLoS ONE 7(5): e36675.

Immunohistochemical analysis of murine pancreatic islets, staining PDX1 (red) with ab47267.

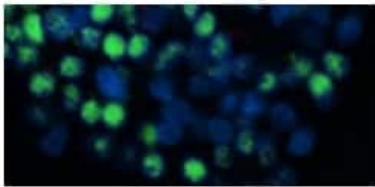
Tissue was fixed in formalin, permeablized with 0.25% Triton X-100, and blocked in blocking solution for 1 hour at room temperature; antigen retrieval was by heat mediation in a citrate buffer. Samples were incubated with primary antibody overnight at 4°C and a fluorescent-conjugated anti-rabbit IgG was used as the secondary antibody.



Immunohistochemistry (Formalin/PFA-fixed paraffin-embedded sections) - Anti-PDX1 antibody (ab47267)

This image is courtesy of Antibody Solutions Ltd.

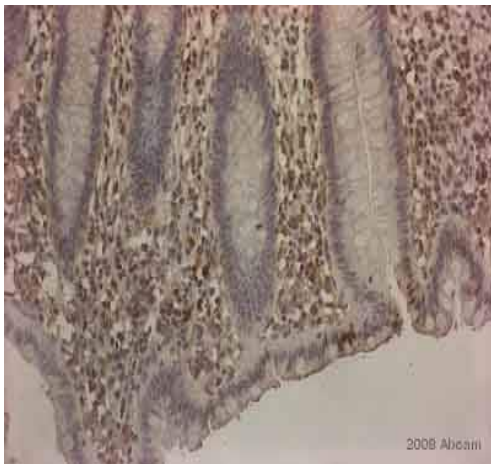
ab47267 staining PDX1 in rat pancreatic tissue sections by immunohistochemistry (Formalin/PFA-fixed paraffin embedded sections). Tissue underwent fixation in formaldehyde, heat mediated antigen retrieval in citrate buffer pH6.0 and blocking for 15 minutes at 20°C. The primary antibody was diluted 1/500 and incubated with sample for 45 minutes at 20°C. A HRP-conjugated goat polyclonal to rabbit IgG was used undiluted as secondary.



2007 Abcam

Immunocytochemistry/ Immunofluorescence - Anti-PDX1 antibody (ab47267)

Immunostaining of islet-epithelial clusters from human foetal pancreata with ab47267 (green). Nuclei are visualised with DAPI (blue).



2008 Abcam

Immunohistochemistry (Formalin/PFA-fixed paraffin-embedded sections) - Anti-PDX1 antibody (ab47267)

This image is courtesy of Antibody Solutions Ltd.

ab47267 staining PDX1 in human appendix tissue sections by immunohistochemistry (Formalin/PFA-fixed paraffin embedded sections). Tissue underwent fixation in formaldehyde, heat mediated antigen retrieval in citrate buffer pH6.0 and blocking for 15 minutes at 20°C (5 minutes for peroxide block and 10 minutes for protein block). The primary antibody was diluted 1/500 and incubated with sample for 45 minutes at 20°C. A HRP-conjugated goat polyclonal to rabbit IgG was used undiluted as the secondary.

**Please note:** All products are "FOR RESEARCH USE ONLY. NOT FOR USE IN DIAGNOSTIC PROCEDURES"

## Our Abpromise to you: Quality guaranteed and expert technical support

- Replacement or refund for products not performing as stated on the datasheet
- Valid for 12 months from date of delivery
- Response to your inquiry within 24 hours
- We provide support in Chinese, English, French, German, Japanese and Spanish
- Extensive multi-media technical resources to help you
- We investigate all quality concerns to ensure our products perform to the highest standards

If the product does not perform as described on this datasheet, we will offer a refund or replacement. For full details of the Abpromise, please visit <https://www.abcam.co.jp/abpromise> or contact our technical team.

## Terms and conditions

- Guarantee only valid for products bought direct from Abcam or one of our authorized distributors