

Anti-PDLIM1/CLP36 antibody [EPR7186(B)] ab129015

リコンビナント RabMAb[®]

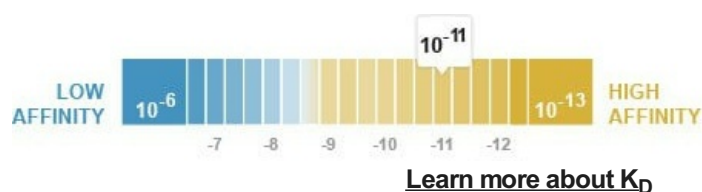
2 References [画像数 5](#)

製品の概要

製品名	Anti-PDLIM1/CLP36 antibody [EPR7186(B)]
製品の詳細	Rabbit monoclonal [EPR7186(B)] to PDLIM1/CLP36
由来種	Rabbit
アプリケーション	適用あり: Flow Cyt (Intra), WB, ICC/IF 適用なし: IHC-P
種交差性	交差種: Mouse, Rat, Human
免疫原	Synthetic peptide within Human PDLIM1/CLP36 aa 50-150. The exact sequence is proprietary.
ポジティブ・コントロール	Human heart, L6, 293T, Caco 2, Saos 2, C2C12, Rat lung and Mouse lung lysates; Saos 2 cells. ICC/IF: 293T cells
特記事項	This product is a recombinant monoclonal antibody, which offers several advantages including: <ul style="list-style-type: none"> - High batch-to-batch consistency and reproducibility - Improved sensitivity and specificity - Long-term security of supply - Animal-free production For more information see here . Our RabMAb [®] technology is a patented hybridoma-based technology for making rabbit monoclonal antibodies. For details on our patents, please refer to RabMAb[®] patents .

製品の特性

製品の状態	Liquid
保存方法	Shipped at 4°C. Store at -20°C. Stable for 12 months at -20°C.
解離定数 (K _D 値)	K _D = 9.54 x 10 ⁻¹¹ M



バッファー	pH: 7.20 Preservative: 0.01% Sodium azide
-------	--

Constituents: 9% PBS, 40% Glycerol (glycerin, glycerine), 0.05% BSA, 50% Tissue culture supernatant

精製度	Protein A purified
ポリ/モノ	モノクローナル
クローン名	EPR7186(B)
アイソタイプ	IgG

アプリケーション

The Abpromise guarantee **Abpromise保証は、**次のテスト済みアプリケーションにおけるab129015の使用に適用されず
アプリケーションノートには、推奨の開始希釈率がありますが、適切な希釈率につきましてはご検討ください。

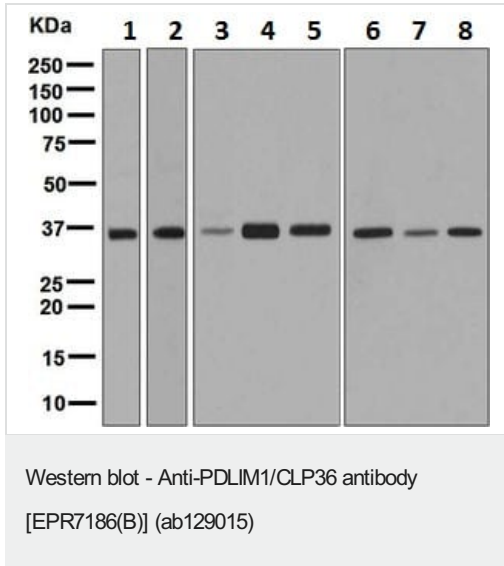
アプリケーション	Abreviews	特記事項
Flow Cyt (Intra)		1/100 - 1/500. ab172730 - Rabbit monoclonal IgG, is suitable for use as an isotype control with this antibody.
WB		1/1000 - 1/10000. Detects a band of approximately 36 kDa (predicted molecular weight: 36 kDa).
ICC/IF		1/100.

追加情報 Is unsuitable for IHC-P.

ターゲット情報

機能	Cytoskeletal protein that may act as an adapter that brings other proteins (like kinases) to the cytoskeleton.
組織特異性	Strongly expressed in the heart and skeletal muscle, moderately expressed in the spleen, small intestine, colon, placenta, and lung. A lower level expression is seen in liver, thymus, kidney, prostate and pancreas and is not found in the brain, testis, ovary, and peripheral blood leukocytes.
配列類似性	Contains 1 LIM zinc-binding domain. Contains 1 PDZ (DHR) domain.
細胞内局在	Cytoplasm. Cytoplasm > cytoskeleton. Associates with the actin stress fibers.

画像



All lanes : Anti-PDLIM1/CLP36 antibody [EPR7186(B)] (ab129015) at 1/1000 dilution

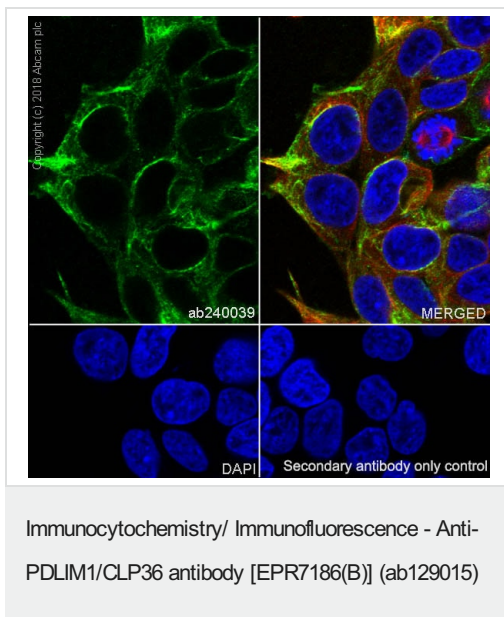
- Lane 1** : Human heart cell lysate
- Lane 2** : L6 cell lysate
- Lane 3** : 293T cell lysate
- Lane 4** : Caco 2 cell lysate
- Lane 5** : Saos 2 cell lysate
- Lane 6** : C2C12 cell lysate
- Lane 7** : Rat lung cell lysate
- Lane 8** : Mouse lung cell lysate

Lysates/proteins at 10 µg per lane.

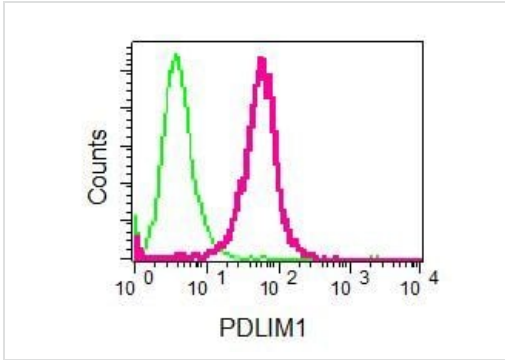
Secondary

All lanes : HRP labelled Goat anti-Rabbit IgG at 1/2000 dilution

Predicted band size: 36 kDa

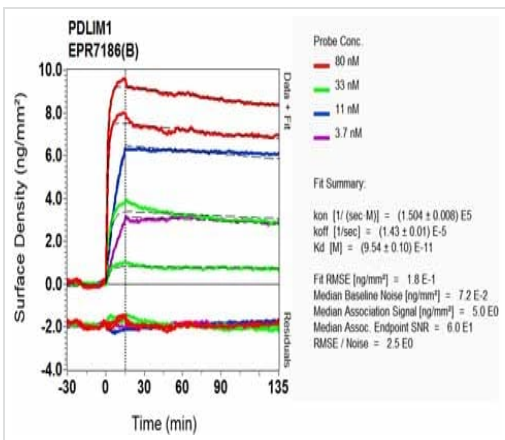


Immunocytochemistry/ Immunofluorescence analysis of 293T (human embryonic kidney epithelial cell) cells labeling PDLIM1/CLP36 with purified ab129015 at 1/100 dilution (10 µg/mL). Cells were fixed in 4% Paraformaldehyde and permeabilized with 0.1% tritonX-100. Cells were counterstained with **ab195889** Anti-alpha Tubulin antibody [DM1A] - Microtubule Marker (Alexa Fluor® 594) 1/200 (2.5 µg/mL). Goat anti rabbit IgG (Alexa Fluor® 488, **ab150077**) was used as the secondary antibody at 1/1000 (2 µg/mL) dilution. DAPI (blue) was used as nuclear counterstain. **ab195889** Anti-alpha Tubulin antibody [DM1A] - Microtubule Marker (Alexa Fluor® 594) 1/200 (2.5 µg/mL) was used as the secondary antibody only control.



Flow Cytometry (Intracellular) - Anti-PDLIM1/CLP36 antibody [EPR7186(B)] (ab129015)

ab129015, at 1/100 dilution, staining PDLIM1/CLP36 in permeabilized Saos 2 cells by intracellular flow cytometry or a Rabbit IgG negative control (green).



OI-RD Scanning - Anti-PDLIM1/CLP36 antibody [EPR7186(B)] (ab129015)

Equilibrium disassociation constant (K_D)

Learn more about K_D

[Click here to learn more about \$K_D\$](#)

Why choose a recombinant antibody?

Research with confidence
Consistent and reproducible results

Long-term and scalable supply
Recombinant technology

Success from the first experiment
Confirmed specificity

Ethical standards compliant
Animal-free production

Anti-PDLIM1/CLP36 antibody [EPR7186(B)] (ab129015)

Our Abpromise to you: Quality guaranteed and expert technical support

- Replacement or refund for products not performing as stated on the datasheet
- Valid for 12 months from date of delivery
- Response to your inquiry within 24 hours

- We provide support in Chinese, English, French, German, Japanese and Spanish
- Extensive multi-media technical resources to help you
- We investigate all quality concerns to ensure our products perform to the highest standards

If the product does not perform as described on this datasheet, we will offer a refund or replacement. For full details of the Abpromise, please visit <https://www.abcam.co.jp/abpromise> or contact our technical team.

Terms and conditions

- Guarantee only valid for products bought direct from Abcam or one of our authorized distributors