




Anti-PDIA6 antibody ab11432

16 References **画像数 3**

製品の概要

製品名	Anti-PDIA6 antibody
製品の詳細	Rabbit polyclonal to PDIA6
由来種	Rabbit
アプリケーション	適用あり: ICC/IF, WB
種交差性	交差種: Human 交差が予測される動物種: Rat, Hamster, Xenopus laevis, Zebrafish 
免疫原	Synthetic peptide corresponding to Human PDIA6 aa 476-492. Sequence: DIDLSDVELDDLKDEL (Peptide available as ab11432) <div>  Run BLAST with  Run BLAST with </div>
ポジティブ・コントロール	WB: A549, A431, HeLa, MCF7, Caco-2, HepG2, K-562 and COLO 205 cell lysates ICC/IF: A549 and HeLa cells.
特記事項	<p>The Life Science industry has been in the grips of a reproducibility crisis for a number of years. Abcam is leading the way in addressing this with our range of recombinant monoclonal antibodies and knockout edited cell lines for gold-standard validation. Please check that this product meets your needs before purchasing.</p> <p>If you have any questions, special requirements or concerns, please send us an inquiry and/or contact our Support team ahead of purchase. Recommended alternatives for this product can be found below, along with publications, customer reviews and Q&As</p>

製品の特性

製品の状態	Liquid
保存方法	Shipped at 4°C. Store at +4°C short term (1-2 weeks). Upon delivery aliquot. Store at -20°C. Avoid freeze / thaw cycle.
バッファー	Preservative: 0.01% Sodium azide
精製度	Whole antiserum
ポリ/モノ	ポリクローナル

アプリケーション

The Abpromise guarantee

Abpromise保証は、次のテスト済みアプリケーションにおけるab11432の使用に適用されます

アプリケーションノートには、推奨の開始希釈率がありますが、適切な希釈率につきましてはご検討ください。

アプリケーション	Abreviews	特記事項
ICC/IF		1/250.
WB		1/250. Detects a band of approximately 50 kDa.Can be blocked with Rabbit polyclonal to PDIA6 (ab11432) .

ターゲット情報

機能

May function as a chaperone that inhibits aggregation of misfolded proteins. Plays a role in platelet aggregation and activation by agonists such as convulxin, collagen and thrombin.

組織特異性

Expressed in platelets (at protein level).

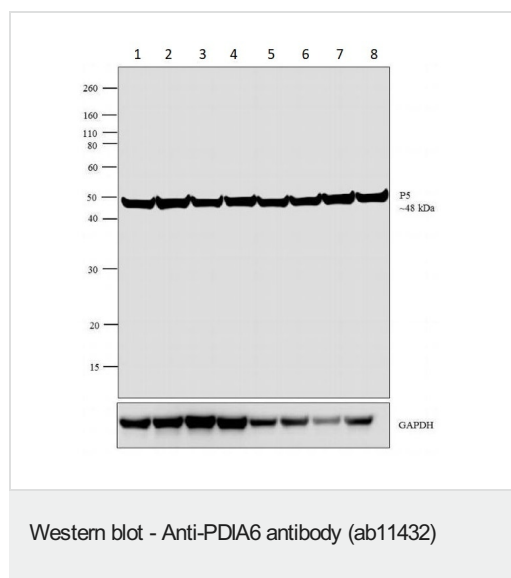
配列類似性

Belongs to the protein disulfide isomerase family.
Contains 2 thioredoxin domains.

細胞内局在

Endoplasmic reticulum lumen. Cell membrane. Melanosome. Identified by mass spectrometry in melanosome fractions from stage I to stage IV.

画像



All lanes : Anti-PDIA6 antibody (ab11432) at 1/250 dilution

Lane 1 : A549 cell lysate

Lane 2 : A431 cell lysate

Lane 3 : HeLa cell lysate

Lane 4 : MCF7 cell lysate

Lane 5 : K-562 cell lysate

Lane 6 : Caco-2 cell lysate

Lane 7 : HepG2 cell lysate

Lane 8 : COLO 205 cell lysate

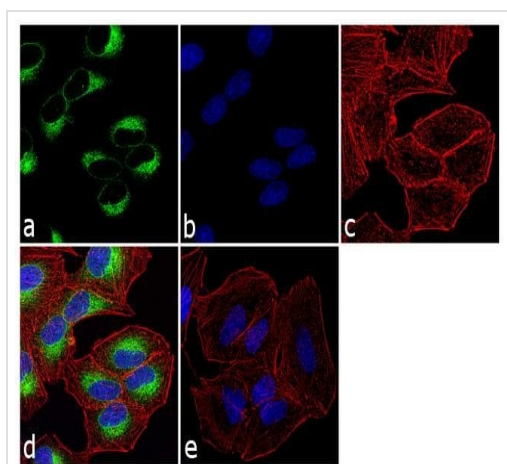
Lysates/proteins at 30 µg per lane.

Secondary

All lanes : Goat anti-Rabbit IgG (H+L), HRP conjugate at 1/2500 dilution

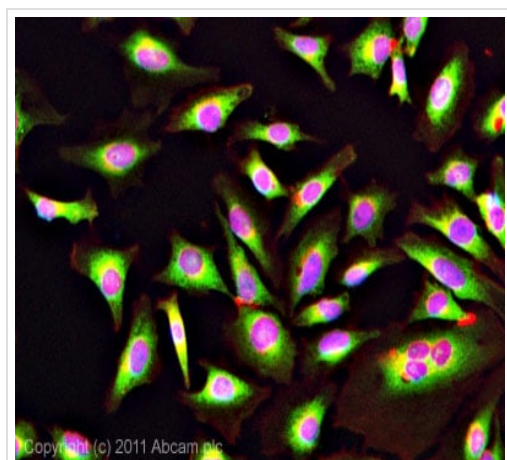
Observed band size: 48 kDa

Detected by chemiluminescence.



Immunocytochemistry/ Immunofluorescence - Anti-PDIA6 antibody (ab11432)

Immunocytochemistry/ Immunofluorescence analysis of 70% confluent log phase A549 cells labeling PDIA6 with ab11432. The cells were fixed with 4% paraformaldehyde for 10 minutes, permeabilized with 0.1% Triton™ X-100 for 10 minutes, and blocked with 1% BSA for 1 hour at room temperature. The cells were labeled with ab11432 at 1/250 dilution in 0.1% BSA and incubated for 3 hours at room temperature and then labeled with Goat anti-Rabbit IgG (H+L) Secondary Antibody, Alexa Fluor® 488 conjugate at a dilution of 1/2000 for 45 minutes at room temperature (Panel a: green). Nuclei (Panel b: blue) were stained with SlowFade® Gold Antifade Mountant with DAPI. F-actin (Panel c: red) was stained with Rhodamine Phalloidin, 1/300). Panel d represents the merged image showing cytoplasmic localization. Panel e shows the no primary antibody control. The images were captured at 60X magnification.



Immunocytochemistry/ Immunofluorescence - Anti-PDIA6 antibody (ab11432)

ICC/IF image of ab11432 stained HeLa cells. The cells were 4% formaldehyde fixed (10 min) and then incubated in 1%BSA / 10% normal goat serum / 0.3M glycine in 0.1% PBS-Tween for 1h to permeabilise the cells and block non-specific protein-protein interactions. The cells were then incubated with the antibody (ab11432, 1µg/ml) overnight at +4°C. The secondary antibody (green) was **ab96899**, DyLight® 488 goat anti-rabbit IgG (H+L) used at a 1/250 dilution for 1h. Alexa Fluor® 594 WGA was used to label plasma membranes (red) at a 1/200 dilution for 1h. DAPI was used to stain the cell nuclei (blue) at a concentration of 1.43µM.

Please note: All products are "FOR RESEARCH USE ONLY. NOT FOR USE IN DIAGNOSTIC PROCEDURES"

Our Promise to you: Quality guaranteed and expert technical support

- Replacement or refund for products not performing as stated on the datasheet
- Valid for 12 months from date of delivery
- Response to your inquiry within 24 hours

- We provide support in Chinese, English, French, German, Japanese and Spanish
- Extensive multi-media technical resources to help you
- We investigate all quality concerns to ensure our products perform to the highest standards

If the product does not perform as described on this datasheet, we will offer a refund or replacement. For full details of the Abpromise, please visit <https://www.abcam.co.jp/abpromise> or contact our technical team.

Terms and conditions

- Guarantee only valid for products bought direct from Abcam or one of our authorized distributors